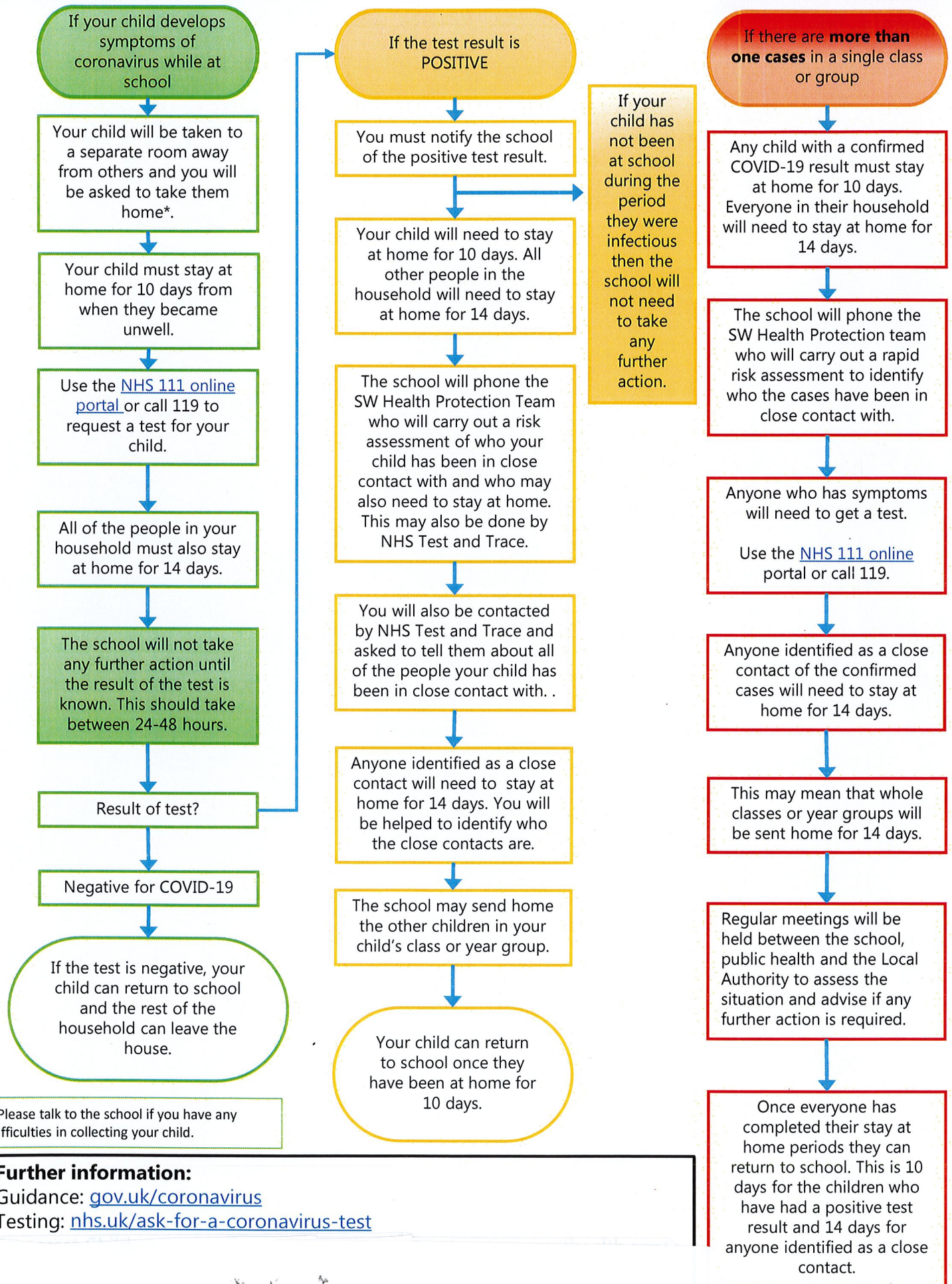


Management of COVID-19 in school-age children

Actions for parents/carers

If your child has any of the symptoms of coronavirus: a high temperature, a new, continuous cough, and a loss of or change to taste or smell; do not send them to school



*Please talk to the school if you have any difficulties in collecting your child.

Further information:

Guidance: [gov.uk/coronavirus](https://www.gov.uk/coronavirus)

Testing: nhs.uk/ask-for-a-coronavirus-test