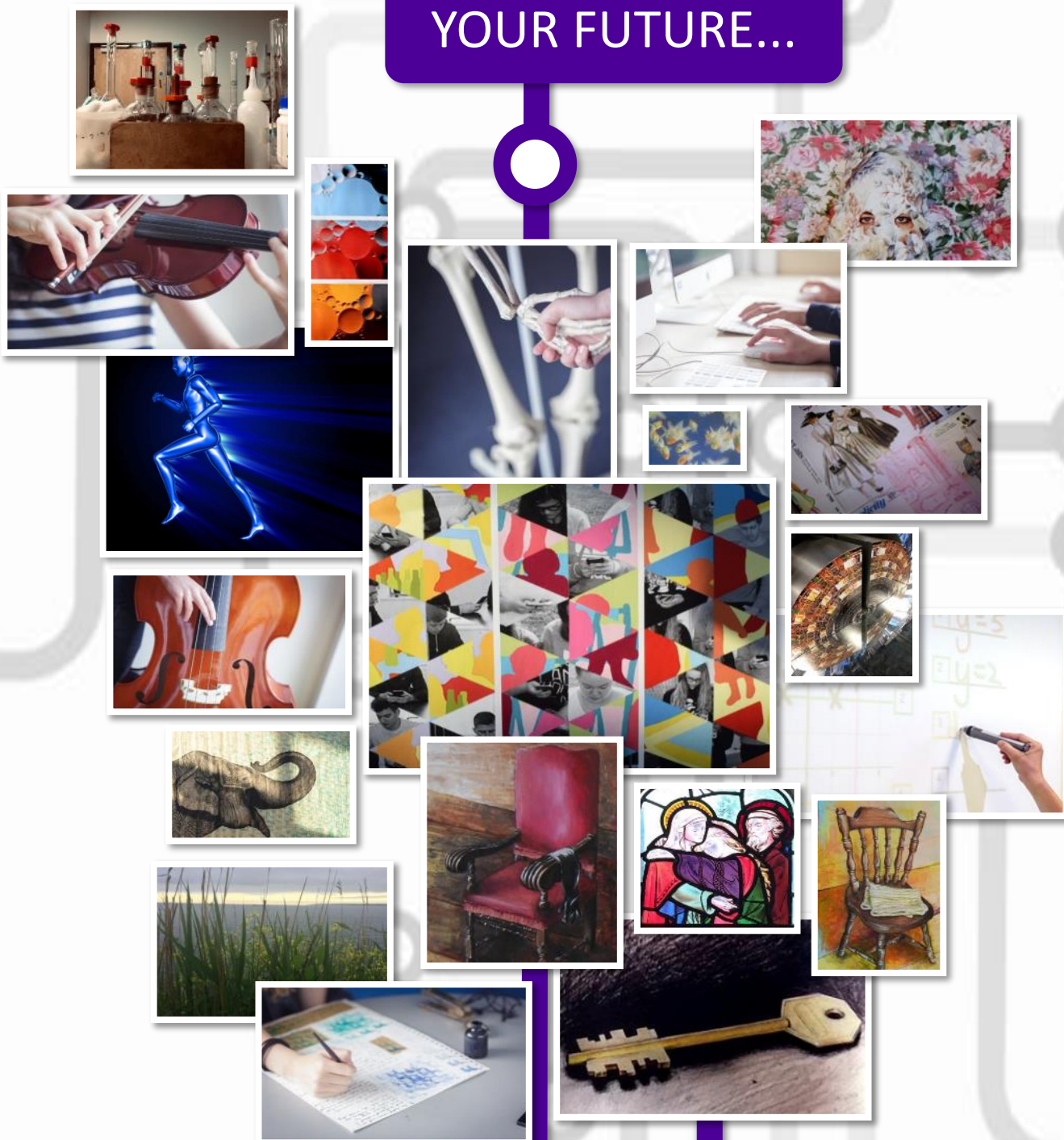


YOUR JOURNEY

YOUR FUTURE...



Prospectus 2021

Nailsea School Sixth Form

Mizzymeade Road | Nailsea | North Somerset | BS48 2HN | [www.nailseaschool.com](http://www.nailseaschool.com)



Nailsea School  
**SIXTH FORM**

# CONTENTS

PAGE	
2	Welcome
3	Aims, Results & Partnerships
4	Entry Requirements & How to Apply
5	Guidelines
6	Tutor Groups & Volunteer and Enrichment Opportunities
7	Access to Level 3
8	Acting Diploma (boomsatsuma)
9	Games, VR and VFX Diploma (boomsatsuma)
10	Media Production Diploma (boomsatsuma)
11	Media Production Extended Diploma (boomsatsuma)
12	Priority Football Academy (Priority Football)
13	Applied Science Level 3 Certificate and Extended Certificate
14	Art, Craft and Design A Level
15	Biology A Level
16	Business Studies Level 3 Cambridge Technical
17	Chemistry A Level
18	Criminology Level 3 Applied Diploma
19	Creative and Performing Arts
20	English Language A Level
21	English Literature A Level
22	Extended Project
23	Fashion / Textiles A Level
24	Film Studies A Level
25	Forensic and Criminal Investigation BTEC Level 3 National Diploma
26	French and Spanish A Level
27	French and Spanish A Level continued
28	Geography A Level
29	Health & Social Care BTEC Level 3 National Extended Diploma
30	Health & Social Care BTEC Level 3 National Extended Certificate
31	History A Level
32	ICT Level 3 Cambridge Technical
33	Maths A Level
34	Maths (Further) AS + A Level
35	Media Studies
36	Photography A Level
37	Physical Education A Level
38	Physics A Level
39	Politics A Level
40	Product Design: 3D Design A Level
41	Psychology A Level
42	Philosophy, Ethics and Religion A Level
43	Sport and Physical Activity Level 3 Cambridge Technical
44	Sport and Physical Activity Development Level 3 Cambridge Technical Extended Diploma

# Welcome to Nailsea School

## Sixth Form

Nailsea Sixth Form is a vibrant learning community with a range of educational opportunities, targeting different levels of learning. Students learn to work independently and are encouraged to think widely about their future aspirations.

Situated less than 10 miles from Bristol, and just over 15 miles from Weston-super-Mare, Nailsea enjoys the benefits of a small town, whilst being on the doorstep of one of the UK's most prosperous, vibrant and diverse cities, internationally renowned for its links to the Media, Creative and STEM industries.

Nailsea and Backwell railway station is a 15-minute walk from the Sixth Form and has direct links from both Bristol Temple Meads and Weston-super-Mare. The Sixth Form is also fortunate enough to be on a main bus route that services many of the towns across North Somerset, and is situated within 3 minutes' walk of Nailsea's shopping centre.

Our self-contained Sixth Form area is designed to support the independent learning of our older year groups, with group and individual study areas. We are extremely proud of our students who every year go on to excel in securing places at top universities, taking up prestigious apprenticeships, fulfilling ambitions and securing work in a range of sectors.

As well as reading this prospectus, for further assistance in selecting your next area of study we recommend you talk through your plans with family, friends and teachers. Your Careers advisor will also be able to offer guidance on your future plans. For further information you or your parents can contact any of the following staff.

**Mr J Reddiford** Head of 6th Form    [JReddiford@nailseaschool.com](mailto:JReddiford@nailseaschool.com)

**Mrs E Jones** Assistant Head of 6th Form    [GJones@nailseaschool.com](mailto:GJones@nailseaschool.com)

**Mrs D Elliott** Headteacher    [DElliott@nailseaschool.com](mailto:DElliott@nailseaschool.com)

### 2020 Entry Dates

19 November—14 December	Sixth Form Open Evening Online
16-20 November:	Sixth Form Focus Week (Internal)*
14 December:	Applications Deadline
Summer 2021:	Sixth Form Induction week

\*External Candidates can arrange visits and tours by contacting Mr Reddiford, Head of 6th Form: [JReddiford@nailseaschool.com](mailto:JReddiford@nailseaschool.com)

" The sixth form supports students well in their learning and next steps...subjects are taught by teachers who have strong subject knowledge and the curriculum is well thought out. These teachers provide challenging tasks with opportunities for discussion and debate. As a result, students achieve well. "





## Aims of Nailsea Sixth Form

- To help you achieve your potential inside and outside of the classroom.
- To provide information and guidance in choosing your future career pathway.
- To give personal tutoring and support.
- To provide a happy, confident and purposeful working atmosphere in which social and leisure activities have their place in a well rounded provision.

## A Levels 4 Year Average Headline Results (includes 2020 figures)

- Nailsea School A\* - C All Entries 81%
- Nailsea School A\*/A 27%
- Nailsea School A\* - B 55%
- Nailsea School A\* - E 99%

## A Levels 2019 Headline Results

- Nailsea School A\* - C All Entries 83%  
National Average A\* - C All Entries 75.5%
- Nailsea School A\*/A 25%  
National Average A\*/A 25%
- Nailsea School A\* - B 54%
- Nailsea School A\* - E 99%  
National Average A\* - E 97.5%

## A Levels 2018 Headline Results

- Nailsea School A\* - C All Entries 82%  
National Average A\* - C All Entries 78.4%
- Nailsea School A\*/A 32%  
National Average A\*/A 26.4%
- Nailsea School A\* - B 59%
- Nailsea School A\* - E 99%  
National Average A\* - E 97.6%

"Nailsea School is a great learning environment because the facilities are brilliant"

CS | Yr12

## Nailsea School Partnerships

Following the successful launch of our partnership with boomsatsuma in 2019 Nailsea School are excited to announce the development of further educational opportunities. In addition to our continued work with boomsatsuma, we will be working alongside Priority Football Academy.

The courses offered by our partners can be found at the front of the prospectus, many of them are ideally suited to work alongside our own qualification offer.





"You are given lots of support from staff, especially your subject teacher and tutor, who gets to know you really well"

ER | Yr13

"Teachers will go the extra mile to support you as a person both in and outside of their lessons"

EH | Yr13

## Entry Requirements

Entry to the Sixth Form is not automatic, but depends on:

### LEVEL 3

Achieving 5 grade 4s or above for entry to level 3 courses and meeting the individual entry requirements of your chosen Level 3 courses.

### LEVEL 2

Achieving a number of 2s and 3s at GCSE for our Level 2 courses.

## Course Requirements

All A Levels are 2 year courses and have, in response to government changes been made more difficult. We will be expecting students to select 3 rather than 4 A level subjects for September 2020 to reflect the increasing demands placed by this linear approach.

There are other qualifications (such as the Extended Project) for those who excel at GCSE, and in exceptional circumstances a fourth A level may be considered for students with a majority grade 7 or above at GCSE. All exams are taken in May/June at the end of the two year course.

## How to Apply

Applications can be made online, the application form will go live after the Sixth form Open Evening on the 19th November.

To apply, visit the Sixth Form section of our website [www.nailseaschool.com/sixth-form](http://www.nailseaschool.com/sixth-form) and follow the link to the online form, that will take your application details. Applications should be received by **14 December 2020**.

## Course Requests

We plan the timetable in the light of course requests as submitted on 14th December, aiming to minimise conflicts between particular combinations of subjects. You will be told as soon as possible if your initial requests cannot be met. However, we recognise that there may be changes of mind up to September, especially after GCSE results. If you do change your initial course requests, please email Mr. Reddiford, Head of Sixth Form as soon as possible [JReddiford@nailseaschool.com](mailto:JReddiford@nailseaschool.com)

*We cannot guarantee to meet late requests or to find places on courses which are already full, so priority will go to those who opt in December and meet exam requirements, rather than those who make later choices.*

## Please Note

Students who do not achieve a 4 in either English language or literature will need to re-take English language. Likewise students who do not achieve a 4 in Maths will need to re-take. Provision is made for this.

An entry in this prospectus is not a guarantee that a course will definitely run from September 2021 or that all combinations of courses will be possible. Like all Sixth Forms, we must relate student numbers to an efficient use of teaching time. We plan the timetable to meet as many course choices as we can, and we will inform you promptly if a given subject or combination of subjects appears impossible.

If a course is undersubscribed, rather than not running it, we will seek to run the course in conjunction with another provider.

## Guidelines

Many students find it difficult to decide on their Sixth Form courses. In general, try to aim for subjects that you enjoy and feel genuinely motivated towards. If you are planning to move on to university, there are fewer restrictions and special subject requirements than many people fear. If you already have a very clear ambition in mind for your career, do check with a teacher or careers advisor before making final decisions.

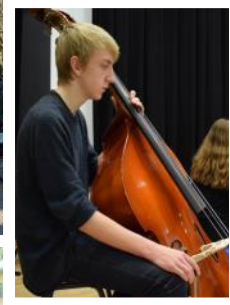
If you are having problems choosing subjects but have clearer interests for University, the following table might help. You could also look at [www.ucas.com](http://www.ucas.com) and choose 'search for an undergraduate course by key word' on the home page, to access university courses and their entry requirements.

The following is an introductory guide to certain university courses. Remember, it is essential to check the full details for yourself.

University Subject	Guidelines
Engineering	Often Maths and Physics required. Sometimes other sciences too, depending on specialism.
Law	A conditional offer is likely to include very high grades, but there are normally no specific A Levels required. All the same, many admissions tutors are looking for evidence of what they see as academic ability.
Medicine	At least 2 sciences usually required, usually A Level Chemistry and probably Biology. Full information is available on the UCAS website .
Nursing	Science A Levels often required, especially Biology. Relevant experience may also be required. The Health and Social Care Extended Certificate and Diploma can lead to a degree in nursing.
Science	Science and Maths A Levels. Individual subjects differ, so you need to check them out. For example, some Biology courses require Chemistry too, and some Biochemistry courses look for Biology, Chemistry and Maths.
Teaching – Primary	4+ GCSE grades in English, Maths and Science required. If you plan to apply for a B Ed degree you should take at least one, preferably two, A Level subjects related to the primary curriculum. The Health and Social Care Extended Certificate and Diploma can lead to a degree in Primary teaching.
Teaching – Secondary	4+ GCSE grades in English and Maths required. If you take a degree prior to teacher training, the degree subject must be relevant to the curriculum subject you want to teach.
Veterinary Science	Generally Sciences and Maths at A Level, especially Chemistry and Biology. Very competitive, both in terms of grades and experience expected.

## Tutor Groups and Registration

Sixth Formers are responsible for registering and collecting messages each day. We work with tutor groups of about twenty. Apart from a weekly assembly, tutorial time is taken up with one-to-one or small group meetings with tutors to monitor work and to discuss anything from university application to personal difficulties. Every Friday there is a tutor group quiz. Your tutor should be your first point of contact in notifying illness or absence, sorting out course difficulties, and planning your progress through the Sixth Form. Sixth Form tutor groups are a mix of Year 12 and Year 13 students; not only does this help the new Year 12 integrate into the Sixth Form, but Year 13 students can be a valuable source of advice, for anything ranging from course difficulties to University choices.



## Volunteer & Enrichment Opportunities

We believe that Sixth Form study is not just about the 'narrow' curriculum of a few subjects, but also developing other skills and abilities. As such we offer other formal courses, such as Duke of Edinburgh Awards and Extended Project (Year 13), and also offer a wide range of other opportunities, both within the school and wider communities:

- Community Partners
- Assistant Tutor Scheme
- Social Action Scheme
- Mentoring Scheme
- Work Experience
- Specialist Conferences and Activities (see also subject entries)
- School Council and Sixth Form Council
- Trips
- Social Events

*"I enjoy the additional freedom that comes from Sixth Form"*

TB | Yr13



# Access to Level 3

## Contact Person: Mrs E Jones

Nailsea Sixth Form is the first school in North Somerset to run an Access to Level 3 course. This course is ideal for Post 16 students who aspire to take on a Level 3 course, but aren't quite ready yet. The programme involves a series of courses which will allow students to build a firm platform, whilst being given help and guidance towards what is the right next steps for them, be it staying on at Nailsea School, attending college or doing an apprenticeship.

In years 2 and 3 you will study your chosen A level/level 3 qualifications.

## What is it?

- It's the perfect bridge to Level 3 courses such as A Levels, BTEC and more!
- It will give your Level 2 grades a boost to advance you on your journey.
- It will introduce you to new subjects you've not tried before such as Film Studies.
- It will give you some time to think about what you do next.
- It will encourage you to learn independently, in preparation for future studies.
- You'll get to know the Nailsea Sixth Form team—who can advise you on your future Level 3 courses.

## Course Outline

In 1 year you will study the following:

- BTEC Level 2 Diploma in Work Skills – an exciting course designed to prepare students for the world of work, enable them to understand their strengths and give them key skills to achieve their next steps, equivalent to 4 GCSEs.
- Level 2 Project—an independent project chosen and designed by the student in a topic that interests them, equivalent to 1 GCSE.
- GCSE Film Studies
- Re-sit GCSE Maths and English Language to achieve a 4 – if required.
- Voluntary work – a weekly placement with a charity or setting of the student's choice.
- A work experience placement of at least a week.
- In years 2 and 3 you will study your chosen A level/level 3 qualifications.

The qualifications required to join access to level 3 are a minimum of 4 grade 2 or above at GCSE or equivalent.

A Post 16 course to take **you** and your ambitions to the **next** level. This **one year** course will equip you with 6 GCSEs and the tools and confidence you need to take up a **Level 3** course. For a further 2 years at Nailsea 6th Form.

## Progression

After completing the one-year Access to Level 3 course you will be equipped to move on to level 3 courses here at Nailsea, or other educational settings, apprenticeships or careers needing level 2 qualifications.



# Acting Diploma



## boomsatsuma at North Somerset Creative Campus @ Nailsea Sixth Form

This course is a Level 3 Diploma in Creative and Performing Arts, delivered across two years at North Somerset Creative Campus with links to The Bristol Old Vic Theatre School. The course is worth 1.5 A levels, meaning you can take two boomsatsuma courses together to gain a qualification equivalent to 3 A levels, or combine just one of our courses with up to 2 other A level subjects at Nailsea School.

Qualification: Diploma in Creative and Performing Arts (Acting) UCAS: Up to 84 points - that's 1.5 A levels. Graded at Pass/Merit/Distinction - 36/60/84 UCAS Points | Duration: 2 years Attendance: Part Time: 2 days a week | Course Costs: Programme fully funded for students ages 16-18 at the start of their course. Students will be asked to cover the costs of theatre trips.

### Why should I choose this course?

- A personalised learning programme to develop your skills and to help you achieve your ambitions beyond the course
- Teaching delivered by tutors who are specialists in their fields
- An 'Acting for Camera' unit delivered by working TV actors
- Shared staff with the Bristol Old Vic theatre School, so you get to work with nationally recognised practitioners who have careers in the industry
- A year 2 production in a professional venue
- Opportunities to link with the full time extended diploma course in Bristol for masterclasses and workshops.

### What will I learn?

The course is a practical one; based on a conservatoire drama school model and tailored for 16-18-year olds. It will be an intensive and challenging acting course, with the standards and expectations of a professional actor training.

It's designed to: develop you as a young contemporary actor, discover your individuality and equip you to be a creative theatre maker, You'll be expected to work as part of a group, responding to a range of stimuli and challenging your personal and creative potential alongside your learning of acting techniques. You'll be required to undertake independent rehearsal, study and research to inform and enhance your learning and development.

### You will learn:

- How to work as a professional actor- building a tool box of different techniques to learn how to approach character, and emotional truth, interpret text and understand style
- How the performing arts industry works and how to make a career in it
- How to work in an ensemble and how to rehearse in a professional way

### Across the 2 years you'll take core units in:

Acting for Camera, Physical Theatre, Comedy, Acting Techniques and Acting Workshop. In year 2, you'll present your final production in a professional theatre in Bristol.

## Progression Post –18

The Level 3 Diploma in Creative and Performing Arts is worth 1.5 A levels, which counts as 84 UCAS points. The course can help secure you a place on a performing arts or drama degree course or will strengthen your application as part of an A level programme. It will also give you some of the practical experience required for drama school entry.



**Entry Requirements: 5 Good GCSEs**

**During this course there will be the opportunity to resit English or Maths GCSEs if needed.**

# Games, VR and VFX Diploma



## boomsatsuma at North Somerset Creative Campus @ Nailsea Sixth Form

This course is a Level 3 Diploma in Games, VR and VFX Diploma delivered across two years at North Somerset Creative Campus with links to Bristol's Creative & Digital Hub, The Engine Shed. The course is worth 1.5 A levels, meaning you can take two boomsatsuma courses together to gain a qualification equivalent to 3 A levels, or combine just one of our courses with up to 2 other A level subjects at Nailsea School.

Qualification: Diploma in Games, VR and VFX UCAS: Up to 84 points - that's equivalent to 1.5 A levels. Graded at Pass/Merit/Distinction - 36/60/84 UCAS Points | Duration: 2 years Attendance: 2 days | Course Costs: Programme fully funded for students ages 16-18 at the start of their course. We ask for a £120 Studio Fee to cover enrichment costs.

### What will the course be like?

The course is designed in conjunction with producers from the most cutting edge games and VR studios in the world. A totally unique learning experience where students work on interactive projects in a real development environment. It's designed to:

- Develop your digital art and programming skills
- Introduce you to interactive processes and techniques
- Develop your soft skills
- Work and communicate with others
- Nurture your creativity and allow you to shine
- Teach you how to teach yourself
- Build a professional portfolio you can use to progress.

Students will spend time in both the North Somerset Creative Campus and The Engine Shed; Bristol's creative and high tech hub. Students working there will have opportunities to support commercial start-ups as well as established businesses. The project-based learning will develop an astute awareness of commercial needs and processes, making those who take the course well equipped to enter into the working world.

### Why should I choose this course?

- A personalised learning programme to develop specific areas of skill and to help you achieve your ambitions beyond the course
- Projects and curriculum designed in conjunction with industry ensures students learn current and relevant industry practice.
- Transferable skills to many other industries including architecture, medical imaging and product design
- Talks and masterclasses from some of the best producers, artists and programmers in the industry

### How is the course structured?

The course has core programmes that run each week across both years. Project/production-based modules are also incorporated into the course and play a key role in developing an understanding of the industry.

### What will I learn?

#### Knowledge:

- 3D and graphics theory
- Media theory and representation
- Audio theory
- Specialist subject investigation
- Engines and programming
- E-commerce and business
- Contextual studies
- Interactive and VFX workflows and pipelines
- Critical thinking

#### Skills:

- 3D character, environment and vehicle modelling
- 2D digital vector illustration
- 2D digital image manipulation
- 2D digital painting
- Motion graphics
- Film and audio editing
- 2D & 3D Animation
- Rotoscoping and compositing
- Engines development
- C# programming

## Progression Post –18

This course provides you with the experience, skills, and knowledge, now often requested by certain institutions and considered more valuable than A Levels, to enter high level apprenticeships, university and entry into the profession. The skills of collaboration, communication, creativity, problem solving and awareness of broader creative commercial needs as well as developing practical skills and a strong knowledge of the working industry, means students are also able to demonstrate suitability for courses outside of Games, VR and VFX.



**Entry Requirements: 5 Good GCSEs**

**During this course there will be the opportunity to resit English or Maths GCSEs if needed.**

# Media Production Diploma



## boomsatsuma at North Somerset Creative Campus @ Nailsea Sixth Form

This course is a Level 3 Diploma in Media Production delivered across two years at North Somerset Creative Campus with links to the Bottle Yard TV and Film Studios. The course is worth 1.5 A levels, meaning you can take two boomsatsuma courses together to gain a qualification equivalent to 3 A levels, or combine just one of our courses with up to 2 other A level subjects at Nailsea School. Qualification: Diploma in Media Production UCAS: Up to 84 points - that's equivalent to 1.5 A levels. Graded at Pass/Merit/Distinction - 36/60/84 UCAS Points | Duration: 2 years Attendance: 2 days | Course Costs: Programme fully funded for students ages 16-18 at the start of their course. We ask for a £120 Studio Fee to cover enrichment costs.

### What will the course be like?

The course is centred around delivering real live projects in real working environments and often for commercial clients.

The course is designed to:

- Develop your skills and expertise across a number of media disciplines
- Allow time, scope and creativity for you to develop skills in particular areas of interest
- Immerse you in the work of creative professionals, understanding the demands of the industry.

Students will spend time at both the North Somerset Creative Campus and the Bottle Yard Film and TV Studios in Bristol, a prime location for those who wish to progress into the world of Film and TV production. With the studio attracting some of the best productions nationally, including BBC One's Poldark and ITV's hit drama, Broadchurch, students get a real taste of this fast paced and exciting industry.

### How is the course structured?

The course is led by the projects, so there is an element of fluidity to the structure. At the beginning of each project, foundation skills are taught to enable to students to undertake the project for whatever discipline/s it presents. In the professional world of media, often projects are multi-disciplinary, so this is reflected in the way we study them. The nature of projects will rotate across the two years to ensure coverage of key media productions skills and processes. Students choose from 42 possible disciplines.

### What will I learn?

**Knowledge:** You will develop an understanding of a variety of media, media products and audiences and will understand how this influences current practice within the industry. You will learn how these different forms of media are produced in professional settings and have the opportunity to try out your skills and put them into practice as you learn about the production processes. You'll be expected to work both individually and as part of groups, responding to project briefs that will both challenge and develop your creativity and you'll be encouraged to undertake independent projects.

**Skills:** The course allows us to engage in a range of project-based skills and credit them to the qualification. These may include, but are not limited to:

- Photography for media products
- Graphic design for media products
- Audio-visual media
- Producing print-based media
- Advertising
- Web authoring and design
- Animation production
- Planning media exhibitions or events

### Why should I choose this course?

- Teaching delivered by tutors who are specialists and often actively working in their field
- Exceptional facilities and links to commercial locations, such as The Bottle Yard Film and TV Studios
- Opportunities to work on real commercial projects, including music videos, marketing materials and film making
- boomsatsuma are creative specialists across media production, games VR and VFX as well as performance and production arts.

## Progression Post –18

This course provides you with the experience, skills, and knowledge, now often required by film schools and arts universities and are considered more valuable than A Levels for entry into high level apprenticeships, university and the industry. The skills of collaboration, communication, creativity, problem solving and awareness of broader creative commercial needs as well as developing practical skills and a strong knowledge of the working industry, means students are also able to demonstrate suitability for courses outside of Media Production.



**Entry Requirements: 5 Good GCSEs**

**During this course there will be the opportunity to resit English or Maths GCSEs if needed.**



# Media Production Extended Diploma



## boomsatsuma at North Somerset Creative Campus @ Nailsea Sixth Form

This course is a Level 3 Extended Diploma in Media Production delivered across two years at North Somerset Creative Campus and SIXTYFIVE Studio, Nailsea. It's a full time course equivalent in size to 3 A levels.

Qualification: Extended Diploma in Media Production UCAS: Up to 168 points - that's 3 A levels. Graded at Pass/Merit/Distinction - 72/120/168 UCAS Points | Duration: 2 years Attendance: Full time: 4 days a week | Course Costs: Programme fully funded for students ages 16-18 at the start of their course. We ask for a £120 Studio Fee to cover enrichment costs.

### What will the course be like?

The course is centred around delivering real live projects in real working environments and often for commercial clients. You will spend a minimum of two days on site in the studio with the remainder of the programme at North Somerset Creative Campus.

The course is designed to:

- Develop your skills and expertise across a number of media disciplines
- Allow time, scope and creativity for you to develop skills in particular areas of interest
- Immerse you in the work of creative professionals, understanding the demands of the industry.

Students will spend time in both the North Somerset Creative Campus and at SIXTYFIVE Studio, Nailsea. This project-based learning for students will develop an awareness of production processes, that would enable someone to access entry level roles within the industry upon completion.

### How is the course structured?

The course is led by the projects, so there is an element of fluidity to the structure. At the beginning of each project foundation skills are taught to enable to students to undertake the project for whatever discipline/s it presents. In the professional world of media, often projects are multi-disciplinary, so this is reflected in the way we study them on this course. The nature of projects will rotate across the two years to ensure coverage of key media productions skills and processes. Students choose from 42 possible disciplines.

### What will I learn?

**Knowledge:** You will develop an understanding of a variety of media, media products and audiences and will understand how this influences current practice within the industry. You will learn how these different forms of media are produced in professional settings and have the opportunity to try out your skills and put them into practice as you learn about the production processes. You'll be expected to work both individually and as part of groups, responding to project briefs that will both challenge and develop your creativity and you'll be encouraged to undertake independent projects.

**Skills:** The course allows us to engage in a range of project-based skills and credit them to the qualification. These may include, but are not limited to:

- Photography for media products
- Graphic design for media products
- Audio-visual media
- Producing print-based media
- Advertising
- Web authoring and design
- Animation production
- Planning media exhibitions or events.

### Why should I choose this course?

- Teaching delivered by tutors who are specialists and often actively working in their field
- Exceptional facilities and links to commercial locations.
- Opportunities to work on real commercial projects, including music videos, marketing materials and film making
- boomsatsuma are creative specialists across media production, games VR and VFX as well as performance and production arts.

## Progression Post –18

This course provides you with the experience, skills, and knowledge, now often requested by certain institutions and considered more valuable than A Levels, to enter high level apprenticeships, university and entry into the profession. The skills of collaboration, communication, creativity, problem solving and awareness of broader creative commercial needs as well as developing practical skills and a strong knowledge of the working industry, means students are also able to demonstrate suitability for courses outside of Media Production.

**Entry Requirements: 5 Good GCSEs**

**During this course there will be the opportunity to resit English or Maths GCSEs if needed.**



# Priority Football Academy

## @ Nailsea Sixth Form



Incorporate football into your studies, with weekly training sessions during the school day and midweek fixtures in the English Colleges FA League. A career in football may not be as far away as you think...

As the football industry continues to experience a high rate of growth, the career opportunities within it have never been better for young people. With a focus on education and providing opportunities, we aim to help you build the experience and qualifications you need to stand out from the competition when starting your career in Football.

### What is Priority Football Academy?

Working in partnership with Nailsea School, Priority Football Academy is recruiting student athletes for the 2020 academic year. The Academy will offer enjoyable, structured training sessions to help you reach your full potential, opening doors to further opportunities within football and other sports. All sessions will be led by our UEFA Qualified Coaches Robert Prior & Alex Lumsden. A typical schedule will consist of three training sessions per week (during Sixth form hours), using Nailsea School's fantastic all-weather facilities. Training sessions will cover the technical and tactical aspects of the football programme, with matches in the ECFA Men's League South West Region. Analysis, physiotherapy and recovery sessions will be integrated into the weekly training schedule.

### What will I achieve?

Develop as a footballer in a professional environment while studying towards your chosen A-Levels (or equivalent qualifications). Training as part of a team and competing against some of the South West's best footballers will be an invaluable experience, unavailable on other courses. Grow your love for football while exploring a breadth of achievable career prospects and make the most of opportunities to gain qualifications and experience within sport through pathways such as:

- Playing
- Officiating
- Coaching
- Performance Analysis
- Sports Therapy
- Sports Rehabilitation
- Nutrition
- Strength and Conditioning
- Sports Psychology

### Where can I go next?

Make your future in football a reality Priority Football Academy and Nailsea School will help you connect with the right people to build strong foundations for your career within football, offering pathways into playing Professionally and Semi-Professionally, coaching, performance analysis and other roles within the sports industry.



### Progression Post – 18

The UK boasts several specialist Universities when it comes to playing and studying sports and performance. Local Universities such as USW, Bath and Hartpury as well as Loughborough, Glasgow and Exeter are some of the top sports performance Universities that can provide you with valuable experience and qualifications essential for further progression within sport.

In addition, Priority Football Academy can help you gain a scholarship studying and playing at a University.

# Applied Science

## Level 3 Certificate and Extended Certificate

Contact Person: Miss I Smith

### Course Outline:

This qualification offers a context based A Level course that incorporates practical aspects of all three scientific disciplines. Topics covered include applied experimental techniques and science in the modern world, undertaking a scientific investigation, and optional units in biology, chemistry and physics.

This qualification will provide you with a broad understanding of vocationally-related sciences to support progress to higher education. It is suitable for studying alongside substantial academic science qualifications, such as A Level sciences or other Level 3 vocational qualifications. This qualification can also prepare you to take up employment in the applied science sector, either directly after achieving the qualification or via higher education. Studying this qualification will enable you to develop your knowledge and understanding of scientific principles, as well as those scientific practical skills recognised by higher education institutions and employers to be most important. The qualification also offers you an opportunity to develop transferable skills such as problem-solving, research and communication as part of your applied learning.

Each unit within the qualification has an applied purpose which acts as a focus for the learning in the unit. The applied purpose demands authentic work-related learning in each of the units. It also requires you to consider how the use and application of your learning affects themselves, other individuals, employers, society and the environment. The applied purpose will also enable you to learn in such a way that you develop:

- skills required for independent learning and development
- a range of generic and transferable skills
- the ability to solve problems
- the skills of project-based research, development and presentation
- the ability to apply mathematical and ICT skills
- the ability to apply learning in vocational contexts.

### Assessment

A mixture of internal and external assessment means you can apply your knowledge in a practical way.

### Additional Considerations

This qualification is supported by a range of universities, and taken alongside other qualifications it can fulfil the entry requirements for a number of science-related higher education courses, including biomedical, forensic and sports science, as well as nursing.

### Entry Requirements:

Grade 4 in Combined Science or an average of Grade 4 in Triple Science at GCSE.

# Art, Craft and Design A Level

Contact Person: Ms R Davies

## Course Outline:

This course will encourage you to develop your artistic and creative responses to a range of subject matter and themes. Whether your main interest is in painting, clay modelling or design, the course can be adapted to suit your creative interests and skills. Over the two years you will be expected to plan, resource and develop projects in an increasingly independent manner, showing that you can work meaningfully with a number of different media to communicate your ideas. You will also explore the use of drawing for different purposes, using a variety of methods and media.

There are two units of work to complete each year. In Year 13 these are 'Component 1: Personal Investigation' and 'Component 2: Externally Set Assignment'. During the Personal Investigation you are required to conduct a practical investigation into an idea, issue, concept or theme supported by written material (between 1000-3000 words). The Externally Set Assignment is published by AQA in February of each year, and following a preparatory period of work you will undergo a 15-hour (3 day) supervised exam, during which you will culminate your investigation.

## Skills / Aptitudes Developed / Required:

You will be expected to demonstrate skills in your chosen area of study within Fine Art (painting, mixed media, printmaking), Graphic Communication (design, illustration, graphics), or Three-dimensional design (sculpture, ceramics, environmental design) etc. A high level of commitment is needed, as you will be expected to work with independence, and guide the direction of your projects, with the support of your teachers.

Entry requirements are a grade 4 and above at GCSE Fine Art.

## Additional Considerations:

Art, Craft and Design students are expected to make regular trips to local galleries, and keep sketchbooks that document your contextual investigations, drawings, and developing ideas.



## Progression Post-18

Foundation Course Diploma in Arts/Media Arts (diagnostic courses designed to help students to target a specialist area for study within the Arts). Degree level courses in Fine Art, Illustration, Media Arts, Animation, Textiles, Graphics and Architecture.

Careers in any number of creative industries; galleries, education, design, media, advertising...

# Biology - A Level

Contact Person: Miss I Smith

## Course Outline:

You will study:

1. Biological molecules
2. Cells
3. Organisms exchange substances with their environment
4. Genetic information, variation and relationships between organisms

In the second year of A Level you will study:

5. Energy transfers in and between organisms
6. Organisms response to changes in their internal and external environments
7. Genetics, populations, evolution and ecosystems
8. The control of gene expression

There is no coursework on this course, however, your performance during practicals will be assessed.

There are three exams at the end of the two years all of which are two hours long. At least 15% of the marks for A-level Biology are based on what you will have learnt in your practicals.

## Skills/Aptitudes Developed/Required:

Two grade 6s in Science (if doing Triple Science at GCSE, one of these should be in Biology), a 6 in Maths and a 5 in English. You must be able to communicate effectively, analyse, evaluate and explain information. You will need to be confident with Maths, as at least 10% of the marks in assessments for biology will require the use of mathematical skills.

## Additional Considerations:

An interest in science and living organisms is important, as is a willingness to work hard and enjoy learning in a variety of different ways.



## Progression Post-18

Biology leads on to a wide range of courses and careers. Including medicine, dentistry, veterinary science, law, optometry, sports science, microbiology, environmental science, biotechnology, NHS life science careers, zoology, food science, animal behaviour and nursing. As well as degree options, the skills you learn during Biology A Level such as analysis, interpretation, investigation, research and problem solving are highly valued by a number of employers and training providers.





# Business Studies - Cambridge Technical Level 3

Contact Person: Dr N Jessop

## Course Outline:

5 Units—3 mandatory (Units 1, 2 and 4) + 2 Choice Units

### Unit 1—The Business Environment (Externally Examined)

In this unit you will develop an understanding of how and why businesses operate in the way they do. You will look at the range of different types of business and business structures, and explore how the ownership of a business and its objectives are interrelated.

### Unit 2—Working in Business (Externally Examined)

This unit will cover the skills and understanding needed to work effectively within a business environment. This includes arranging meetings, working with business documents, making payments, prioritising business activities and communicating with stakeholders.

### Unit 4 Customers and Communications (Coursework)

In this unit you will learn the purpose, methods and importance of communication in business and the appropriateness of different forms of communication for different situations. You will develop the skills that will help you create a rapport with customers and have the opportunity to practice and develop your business communication skills.

## Skills/Aptitudes Developed/Required:

Data manipulation, presenting arguments and making judgements and justified recommendations on the basis of available evidence, problem solving and using appropriate business tools to identify a solution. You will challenge your own assumptions using evidence, and need to be self motivated due to the amount of research required for each unit.

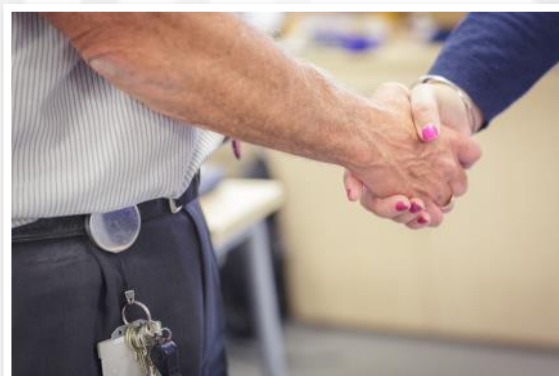
## Additional Considerations:

5 Grade 4s at GCSE, preferably including Maths and English. You do not have to have studied Business at Key Stage 4.



## Progression Post-18

A myriad of post 18 business courses, management routes, vocational routes, etc.



# Chemistry - A Level

Contact Person: Mr M Early

## Course Outline:

Chemistry is for you if...

You want impressive skills to show off to future employers, e.g data handling, analysis, problem solving, collaborative working.

You are not afraid to get stuck on new concept and will enjoy having to work them out.

You don't like essay writing—but you do enjoy methodically working through calculations.

You are unsure what to do but enjoy chemistry and would like to keep your options open.

### Year 1

Module 1: Development of practical skills in chemistry.

Module 2: Foundations in chemistry:

- Atoms, ions and compounds, amount of substance, acids and redox, electrons and bonding & shapes of molecules

Module 3: Periodic Table and Energy:

- Periodicity, reactivity trends, enthalpy, reaction rates and equilibrium.

Module 4: Core organic chemistry and analysis:

- Basic concepts, alkanes, alkenes, alcohols, haloalkanes, organic synthesis and spectroscopy.

### Year 2

Module 5: Physical chemistry and transition elements:

Module 6: Organic chemistry and analysis.

## Skills/Aptitudes Developed/Required:

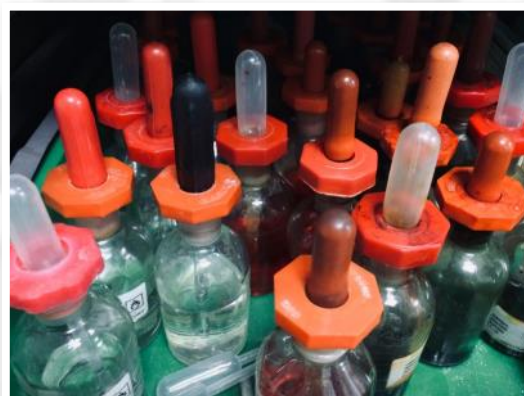
Logical thought, problem solving, precision and accuracy.

Conceptual thought both required and developed.

Students require a 6 in triple science (Chemistry) or a 6/6 in combined science.

## Additional Considerations:

Students will also require a 6 in GCSE Mathematics.



## Progression Post-18

Previous A Level Chemistry students have gone on to study a range of scientific and non-scientific courses at university. These include: medicine, dentistry, mathematics, biochemistry, engineering, architecture, languages, music, economics and veterinary sciences.

A Level Chemistry is a required A Level for most medicine, dentistry and veterinary courses.

# Creative & Performing Arts

## RSL Level 3 Diploma

**Contact Person: Miss Hitchings**

### Course Outline:

This is a vocational course which means that it is a practical, work-related course. You will study two core units, two Acting units, two Music units and one Performing Arts Business unit. You will be able to specialise in either Acting or Music for the two core units.

The course is designed to develop you as a young and creative performer. You will apply a range of skills, knowledge and understanding in preparation for employment/further study. You will discover your individuality and develop your creativity. You will be expected to work as part of a group, responding to a range of stimuli and styles. You will challenge your creative potential and learn new techniques and skills. You will be required to undertake independent rehearsal, study and research to inform and enhance your learning.

#### You will learn:

- how to work as a professional in the Performing Arts industry
- how the Performing Arts industry works and how to make a career in it
- How to work in an ensemble and how to rehearse in a professional way

### Assessment:

This course is designed, on the whole, as a practical course and most of the marks are awarded based on the work done in workshops and during performance preparation. There are written elements to the course that provide evidence of work: these may include a workshop diary, reviews, evaluations and personal portfolios.

### Additional Considerations:

You will need a minimum of a 5 in Drama, Music and English. Students who have not studied Drama or Music will be considered on a case by case basis.



### Progression Post-18

The Level 3 diploma in Creative and Performing Arts is worth 1.5 A Levels which counts as 84 UCAS points for a Distinction\*.

The course can help you secure place on a Performing Arts course or will strengthen your application as part of an A Level programme. It will also give you some of the practical experience required for drama school entry or to study music further.



# Criminology

## WJEC Level 3 Applied Diploma

Contact Mr I Jones

### Course Outline:

This exciting new course will give you an understanding of criminology that is relevant to many job roles within the criminal justice sector, social and probation work as well as sociology and psychology

#### 1 Changing Awareness of Crime - Internal

This will help you understand different types of crime, influences on perceptions of crime and why some crimes are unreported.

#### 2 Criminological Theories - External

This will help you understand why people commit crime, drawing on what you have learned in Unit 1.

#### 3 Crime Scene to Courtroom - Internal

This will provide an understanding of the criminal justice system from the moment a crime has been identified to the verdict. You will examine information in order to review the justice of verdicts in criminal cases.

#### 4 Crime and Punishment - External

This will help you understand awareness of criminality, criminological theories and the process of bringing an accused to court in order to evaluate the effectiveness of social control to deliver criminal justice policy.

You will develop:

- skills required for independent learning and development
- a range of generic and transferable skills
- the ability to solve problems
- the skills of project based research, development and presentation
- the fundamental ability to work alongside other professionals, in a professional environment
- the ability to apply learning in vocational contexts

### Assessment

The following units are internally assessed:

- Unit 1: Changing Awareness of Crime
- Unit 3: Crime Scene to Courtroom

This can be a model assignment set by the exam board or adapted to reflect local situations.

The following units will be externally assessed:

- Unit 2: Criminological Theories
- Unit 4: Crime and Punishment
- 90-minute examination

### Additional Considerations:

5 Grade 4s at GCSE, including Maths and Grade 5 English.



### Progression Post-18

The main purpose of the WJEC Level 3 Applied Diploma in Criminology is to use the qualification to support access to higher education degree courses, such as:

- BSc Criminology
- BSc (Hons) Criminology and Psychology
- LLB (Hons) Law with Criminology
- BA (Hons) Criminology and Sociology
- BSc (Hons) Psychology and Sociology

Alternatively, the qualification allows learners to gain the required understanding and skills to be able to consider employment within some aspects of the criminal justice system, e.g. the National Probation Service, the Courts and Tribunals Service or the National Offender Management Service.



# English Language - A Level

**Contact Person: Mr P Jones**

## Course Outline:

A Level comprises of two examined components and one non-exam assessment:

Language, the individual and society (2hr 30 minute exam worth 40% of A Level);

Language diversity and change (2hr 30 minute exam worth 40% of A Level) and

Language in action (two pieces of coursework: an investigation and piece of original writing with commentary. This is worth 20% of your A Level).



## Skills/Aptitudes Developed/Required:

The course aims to encourage you to develop interest and enjoyment in the study of spoken and written language. Through reading widely, critically and independently you will gain extensive knowledge of the issues and attitudes surrounding the subject and broaden your understanding of the historical, geographical and social impact on the development of the English Language. You will develop skills in speaking and writing for different purposes and audiences. You will learn how to carry out an investigation on a topic of your choice.

The Faculty encourages A Level students to enrich your subject knowledge by attending extra-curricular lectures when appropriate.

## Additional Considerations:

Generally it is expected that when you take this subject at A Level you will have achieved a grade 5, or above, in both English and English Literature at GCSE. A student who is hardworking and committed can also be accepted with lower grades as long as the previous year's teacher confirms that the student would benefit from this course.

## Progression Post-18

English and English Lit. are highly regarded by both universities and in the workplace, given its obvious connection with the skills of communication both written and spoken. Our students have gone on to university courses in English, Philosophy, Media, Linguistics, Law and History, and to careers in Law, Journalism, Media, and Education to name but a few.

# English Literature - A Level

Contact Person: Mr P Jones

## Course Outline:

The A Level course comprises of the study of three units:

Component 01 - Shakespeare—Drama & Poetry pre-1900. 40%  
2 hours 30 minutes.

Component 02 - Close reading in chosen topic area—  
comparative and contextual study from chosen topic area. 40%  
2 hours 30 minutes.

Component 03 - Close reading OR re-creative writing piece with  
commentary. Comparative essay 20% Non Examination  
Assessment.

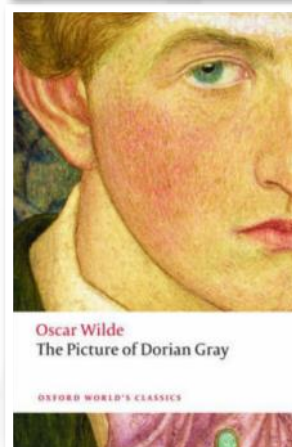
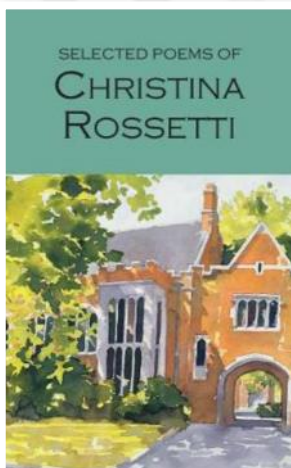
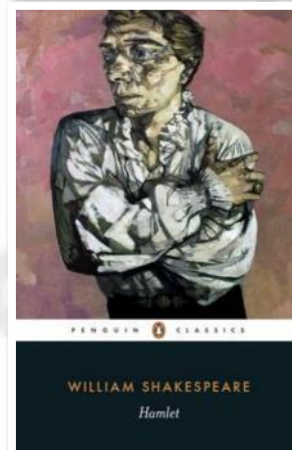
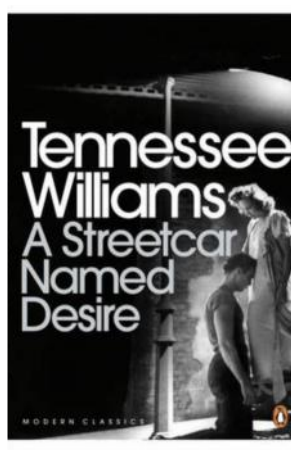
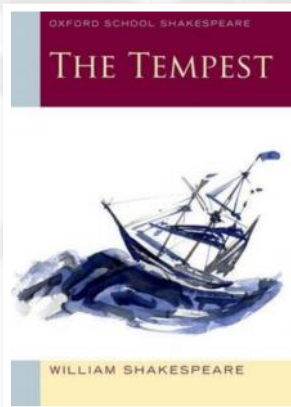
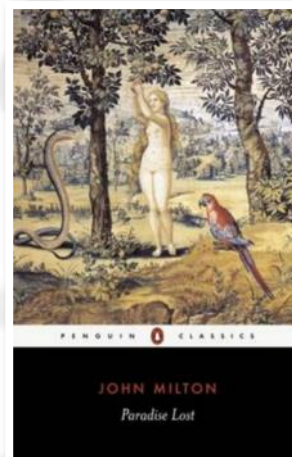
## Skills/Aptitudes Developed/Required:

The course aims to encourage you to develop interest and enjoyment in the study of novels, plays and poems through reading widely, critically and independently. It will introduce you to the traditions of English Literature. You will develop your responses both in writing and in articulating your views in class discussion.

The Faculty encourages you to enrich your subject knowledge by attending such events as theatre trips, visits to art galleries, films and lectures.

## Additional Considerations:

Generally it is expected that you will have achieved a grade 5, or above, in both English and English Literature GCSE. A student who is hardworking and committed can also be accepted with lower grade 4 as long as the previous year's teacher confirms that the student would benefit from this course.



# Extended Project - equivalent to half an A level

Contact Person: Mr J Reddiford

## Course Outline:

There is no course outline. The Extended Project is just that – a project on whatever you want to do. It could be a written piece of up to 5000 words, or you could make an artefact or put on a performance. It can be linked to one of your A Level subjects, or based on a completely different interest. You will have a supervisor but the work is largely independent and down to you. Please note this is not available until after mock exams at the end of Year 12, so will not appear on the 6th form application form.

## Skills/Aptitudes Developed/Required:

Research, selection, independent working, time management, planning and whatever skills are required for your chosen project.

## Additional Considerations:

This is A Level standard in terms of difficulty, it attracts the same UCAS tariff points as half an A Level due to less time spent on the qualification.

## Progression Post-18

All universities like this qualification as it develops skills and teaching methods that they will build on. The independent approach is something employers will look for too.

# Fashion/Textiles - A Level

Contact Person: Miss S Lloyd

## Course Outline:

This creative and thought-provoking qualification gives you the practical skills, theoretical knowledge and confidence to succeed in a number of careers, especially those in the creative industries.

You will investigate historical, social, cultural, environmental and economic influences on design and technology, whilst enjoying opportunities to put your learning in to practice by producing a prototype of your choice.

### Paper 1- Technical Principles

Written exam- 2.5 hours

120 marks

30% A Level

### Paper 2- Design and Making Principles

Written exam- 1.5 hours

80 marks

20% A Level

### Non Examined Assessment

Practical application of core technical principles, core designing and making principles and additional specialist knowledge

How it's assessed

- Substantial design and make project
- 100 marks
- 50% of A-level

Evidence

Written or digital design portfolio and photographic evidence of final prototype

## Skills/Aptitudes Developed/Required:

Entry requirements - A GCSE in Design and Technology Textiles would be an advantage, although not essential. Alternatively, good evidence of your creativity and lots of enthusiasm. All students will need to possess good organisation and time management skills in order to meet deadlines.

## Additional Considerations:

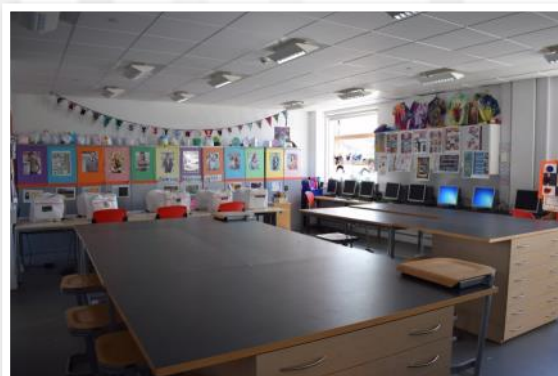
You will produce a variety of products and will have to provide some of your own materials to complete the larger design elements. It is recommended that you purchase a theoretical text book to aid and support all four assessed units.



## Progression Post-18

This course could be the beginning of a career in the Fashion/Textile industry. It will allow students the opportunity to produce portfolios of work enabling successful students to pursue a career in Fashion and Textiles, usually via further education.

There are lots of career options available, ranging from fashion or textile designers, CAD designers, garment technicians, manufacturing, knitters, weavers, printers, colourists, visual merchandisers, buyers, retail, teaching, and many more.





## Course Outline:

[illegible]

A close-up photograph of a black clapperboard and a film reel resting on a light-colored wooden surface. The clapperboard has white text and markings, including 'SCENE', 'TAKE', 'ROLL', and 'SOUND'. The film reel is partially unspooled, showing the dark film and the metal hub.

## Progression Post-18

Students can continue to study Film Studies at university level, or can go into the working world of media and film. Although this is a new course, past students who have studied Media Studies have gone onto study graphic design, events management and media at degree level.

**Skills/Aptitudes Developed/Required:**

## Progression Post-18

Students can continue to study Film Studies at university level, or can go into the working world of media and film. Although this is a new course, past students who have studied Media Studies have gone onto study graphic design, events management and media at degree level.

**Qualification:** A Level **Coursework:** 30% **Examination:** 70% **Awarding Body:** Edugas

# French & Spanish - A Level

Contact Person: Miss J Cahill

## Course Outline:

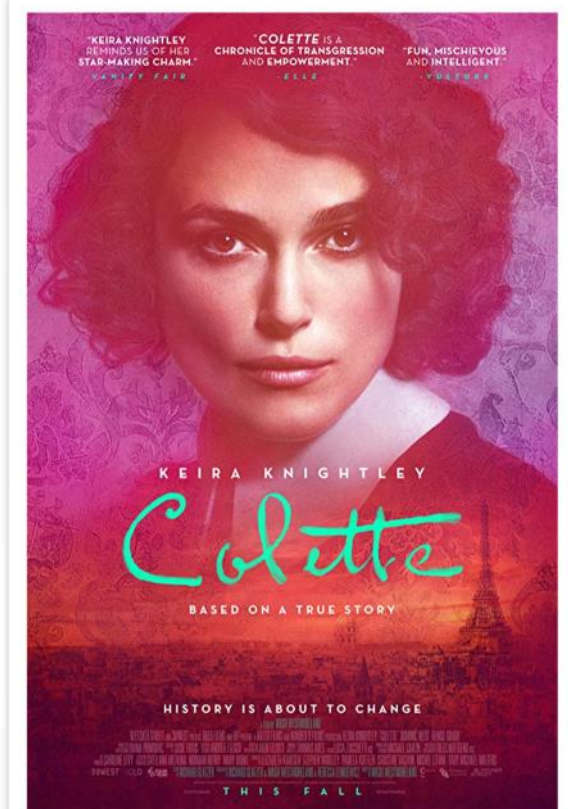
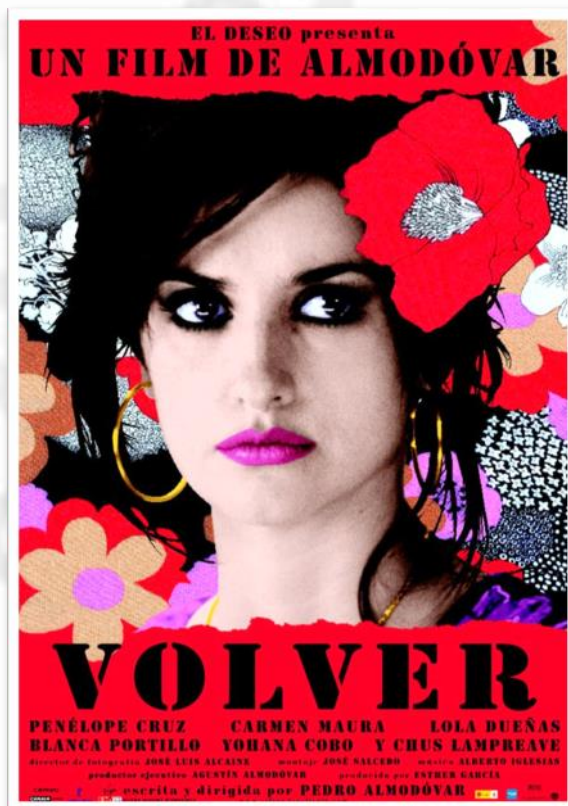
Linguists are in demand. Language GCSEs enable you to function at a social level in a foreign country; A Levels provide you with the skills needed to operate at a much higher level. Studying a foreign language at A Level will broaden your horizons, make you aware of current affairs and popular culture here and abroad, give you the ability to debate and argue your point, and communicate effectively using a high degree of spoken and written language.

You must have a commitment to speaking the language in class, as much of the work is done in pairs or groups producing dialogues, debates, group presentations and dramatisations, based around a wide range of current and topical themes. A careful study will be made of the grammar of the language to enable effective communication in all these areas.

The A Level builds on the knowledge, understanding and skills gained at GCSE and develops the spontaneous use of your language skills. It constitutes an integrated study with a focus on language, culture and society. It fosters a range of transferable skills including communication, critical thinking, research skills and creativity, which are valuable to the individual and society.

The approach is a focus on how the target language-speaking society has been shaped socially and culturally and how it continues to change. In the first year aspects of the social context are studied, together with aspects of the artistic life of the target language-speaking countries. In the second year, further aspects of the social background are covered, alongside the political landscape, both in relation to the country itself and its place in Europe. The past and its role in shaping the present is viewed through historical events and their consequences while the focus on young people and politics looks forward to shaping the future.

You will be using authentic spoken and written sources in the target language. Furthermore you will study a choice of works such as films, literacy texts, novels and poems. Learning a language at A-level is not only a good qualification on your CV but a gift for life as it enables you to become fluent in a second language and therefore opens up many doors and opportunities for your future.



# French & Spanish - A Level continued

## Course Outline (cont):

The Exam is divided into three parts:

**Part 1: Listening, Reading, Writing (50%)** In this paper, all the topics you have studied over the course are assessed via reading and listening as well as translation tasks. Your ability to apply grammar studies is also very important. Where possible authentic material is being incorporated into this paper.

**Part 2: Writing (20%).** In this paper you will be writing about one text and one film (or two texts). Your ability to engage with the material as well as the application of grammar will be assessed.

**Part 3: Speaking (30%).** During the exam you will be talking about an individual research project as well as about one of four sub themes studied during the course (based on the stimulus card).

## Skills/Aptitudes Developed/Required:

- You must be prepared to talk in the language every lesson.
- You must develop and express your opinions on the topics studied.
- You must have a lively interest in the people, life and culture of the relevant country or countries.
- You must have a commitment to keeping abreast of current affairs at home and abroad.
- You must have a desire to make progress in your chosen language through independent study and participation in class.
- You must be prepared to develop and express opinions.
- You must have a willingness to read in the language, attend lectures, plays and films and, if possible, travel abroad to practise your language.

A minimum of a Grade 5 at GCSE Higher Level.

## Additional Considerations:

Students will be asked to purchase a text book as well as the novel, which the class will be studying during the course. We furthermore advise to purchase a grammar and translation workbook.

## Progression Post-18

A modern foreign language is a good subject choice for many students and combines well with a wide range of subjects, i.e. another foreign language, English, Humanities, Business Studies, Computing, Maths and Science. The new examination syllabuses cater for the needs and interests of a wide variety of students, and universities and colleges offer many degree courses combining a modern foreign language with another discipline.

Our links with the European Community are developing constantly and the ability to speak a foreign language is becoming increasingly important. There is great demand for personnel with foreign language skills: international organisations such as the EU or the UN, international banking, import/export trade, airlines and the tourist industry; also, journalism, public relations, secretarial, translating, interpreting, communication technology, publishing and teaching.





# Forensic and Criminal Investigation

## BTEC Level 3 National Diploma

Contact Person: Miss I Smith

### Course Outline:

This course, equivalent to 2 A Levels, is an applied qualification perfect for students wishing to study forensic science and criminology courses at university, or if you want a practical career in the forensic science field or any other lab based employment.

There are plenty of practical activities to boost your understanding of scientific techniques as part of the mandatory units that cover the principles of forensic science before moving onto applications of criminology and forensics in criminal law.

The content of the qualification has been developed alongside academics, universities and other higher education providers to ensure that it supports progression beyond sixth form.

You will study:

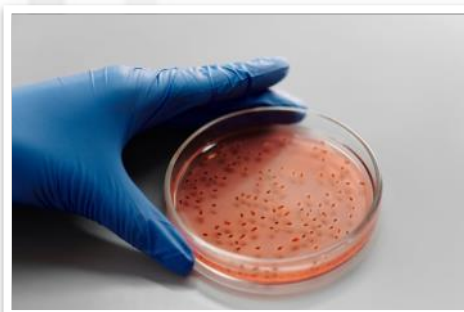
- Principles and Applications of Science
- Practical Scientific Procedures and Techniques
- Science Investigation Skills
- Forensic Investigation Procedures in Practice
- Applications of Criminology
- Criminal Investigation Procedures in Practice
- Physiology of Human Body Systems

Plus one other unit from a selection including Forensic Fire Investigation, Forensic Traffic Collision Investigation and Forensic Genetics.

This course is assessed with both internal assessments (54%) and external assessments (46%). The internal assessments will be assessed through assignments, practical tasks, experiments and crime scene assessments.

### Additional Considerations:

A grade 5-5 in Combined Science and a Grade 4 in English and Maths will be required for entry onto this course.



### Progression Post-18

The qualification may be complemented with other BTEC Nationals or A Levels to support progression to higher education courses in forensics and criminology.

Eg. with an A Level in Chemistry, learners can progress to forensic science degree courses, with an A Level in Psychology, learners can progress to psychology courses and with an A Level in Criminology, learners can progress to criminology courses.

The general science nature of the course will be good for any science lab based degree, apprenticeship or job.

# Geography - A Level

Contact Person: Mrs K Thompson

## Course Outline:

In this newly changed A Level course, you will study a wide range of geographical concepts.

Unit 1: 30%

- Tectonic Process and Hazards
- Landscape Systems and Processes, with a focus on coastal landscapes.
- Water cycle and water insecurity
- Carbon cycle and energy security
- Climate change futures

Unit 2: 30%

- Globalisation - Shaping Places, with a focus on regeneration of rural and urban areas.
- Superpowers
- Health, Human Rights and Intervention

Unit 3: 20%

- Synoptic paper which links together the learning from unit 1 and 2 based around an issue chosen by the exam board.

Unit 4: 20%

- Coursework based on field work from a 4 day residential trip to Slapton, South Devon .

## Skills/Aptitudes Developed/Required:

In order to start the A Level course you should have achieved a grade 5 at GCSE in Geography. However, it might be possible to start the course even if you have not studied Geography at GCSE. Please ask advice from Geography teachers. Several topics covered in the course are developments of work covered at GCSE, but others are new. What is important is that you should have a lively and enquiring mind, an interest in the environment and current affairs, a willingness to explore new ideas and an ability to communicate your ideas effectively.

Those of you who have studied GCSE Geography will find that the knowledge, understanding and the skills you have learned will prove a valuable foundation for study at this level.

To be successful at A Level it would be expected that you would have gained 5 or more GCSEs at grade 5 or above, including Geography (if taken). Special consideration will also be given to other written subjects.

## Additional Considerations:

Field work will be carried out during the course. This involves a residential trip away at a cost per student.



## Progression Post-18

Geography is widely recognised as a subject that offers skills that can be adapted to any job. The decision making skills are valuable in our ever changing world.

# Health & Social Care

## BTEC Level 3 National Extended Diploma

Contact Person: Mrs N Macleod

### Course Outline

This qualification is particularly relevant if you are looking to progress to a career in the health and social care sector. It will prepare you for employment directly after achieving this qualification, via an apprenticeship, or progressing to higher education courses. Both internally and externally assessed units have an applied aspect demanding authentic work-related learning, which require you to consider case studies and a range of scenarios from various health and social care settings.

The qualification will develop your knowledge and practical skills in a range of health and social care sectors. You will study, human lifespan development; working in health and social care; how to meet individual needs and study a range of physiological disorders. In addition, you will learn how to care for individuals with dementia, gain a greater understanding of mental health wellbeing, public health and study a range of psychological perspectives. You will also study a range of science based units, including scientific techniques and microbiology.

To develop a better understanding of the demands of the sector and to gain skills to demonstrate your commitment and interest in the sector when applying to further study, you'll take part in our Health and Social Care Enrichment Programme. As part of the course, you will be expected to take part in a minimum of 100 hours of work experience placements and will use these experiences to enrich your learning, develop your skills and build upon your knowledge. You will gain opportunities to put the skills and knowledge that you learn to practical use in a variety of different settings.

### Assessment:

There are 4 externally assessed units; 3 exams and 1 task in response to a research article set by BTEC, to be completed under supervised conditions.

There are 4 further mandatory internally assessed units involving a variety of tasks and assignments.

You will study 5 further internally assessed units from a range of health and social care topics.

### Other Considerations:

This Health and Social Care Level 3 BTEC course is equivalent to three A-Levels and is awarded the same UCAS points as three A-Levels, and is recognised by universities in your progression to higher education or an apprenticeship. You must achieve a pass grade or above in all units and will be awarded at pass, merit or distinction level.

The course is designed to be studied solely and not necessarily alongside any other A-Level/BTEC qualification.

We deliver the health studies option in the Extended Diploma, which supports you in applying for degree/apprenticeship programmes which require Science modules, and therefore ensures that you have the widest opportunities available to you for higher education.

### Entry Requirements:

5 GCSEs at Grade 4 or above, including English and Science.

### Progression Post-18

It can lead to careers in Nursing, Social Work, Health Visitor, Dietician/Nutritionist, Paramedic, Midwifery, Primary Education, Early Years Education, Teaching Assistant.

The course is recognised by Universities for courses such as: BSc Nursing, BSc Social Work, BSc Physiotherapy, BSc Occupational Therapy, BSc Speech Therapy, BSc Health and Social Care, BSc Midwifery, BSc Radiography, BSc Paramedic Science

The course may lead to apprenticeships, such as: Early Years Provision, Care Worker, Teaching Assistant, Health Care Support Worker.



# Health & Social Care

## BTEC Level 3 National Extended Certificate

Contact Person: Mrs N Macleod

### Course Outline:

This Health and Social Care Level 3 BTEC course is equivalent to one A-Level and is awarded the same UCAS points as one A-Level, recognised by all universities. You must achieve a pass grade or above in all units and will be awarded at pass, merit or distinction level.

Year 12:

#### Unit 1 – Human Lifespan Development

This is an externally examined unit which examines the physical, intellectual, emotional and social development across the human life span and the factors affecting development. This content will serve as an introduction to health and social care needs and so will sit at the heart of the qualification.

You will sit the paper in January. It is a 1 hour 30 minute written paper and comprises 25% of the overall BTEC grade.

#### Unit 5 – Meeting Individual Care Needs

You will focus on the principles and practicalities that underpin meeting individual's care and support needs, which are the foundation of all care disciplines. You will be issued with four task assignments which will be completed in controlled conditions. They will relate to case studies, and you will need to investigate, carry out research and apply your knowledge and learning to a range of tasks that simulate activities and job roles in the health and social care field.

This unit is internally assessed in May and comprises 25% of the overall BTEC grade.

Year 13:

#### Unit 2 – Working in Health and Social Care

This is an externally examined unit which explores what it is like to work in the health and social care sector, including the roles and responsibilities of workers and organisations. These include maintaining the safety of and safeguarding individuals with health and social care needs, making sure that you properly handle their personal information and preventing discrimination towards them.

You will sit this paper in January. It is a 1 hour 30 minute written paper and comprises 33% of the overall BTEC grade.

#### Unit 14 – Physiological Disorders and their Care

You will focus on the nature of physiological disorders and how to provide appropriate treatment and care, including the role of different professionals involved in providing treatment and care for service users. You will be issued with four task assignments which will be completed in controlled conditions. You will be provided with case studies and you will need to investigate, carry out research and apply your knowledge of physiological disorders and their treatments to carry out a range of tasks which occur in the health and social care sector.

This unit is internally assessed in May and comprises 17% of the overall BTEC grade.

### Entry Requirements:

5 GCSEs at Grade 4 or above, including English.

### Progression Post-18

This qualification is designed to support progression to higher education. Areas to consider -any degree in health professions, nursing (adult, children, mental health), special needs, midwifery, physiotherapy, occupational health, etc. health visitor, teaching (all age groups), police force, social work, prison officer...



# History - A Level

Contact Person: Mrs R Dowland

## Course Outline:

Year 12

Nationalism, dictatorship and democracy in twentieth-century Europe

Paper 1: Germany and West Germany, 1918–89

Paper 2: Spain, 1930–78: republicanism, Francoism and the re-establishment of democracy

Year 13:

Paper 3: Lancastrians, Yorkists and Henry VII, 1399 - 1509

Unit 3: Independent enquiry on a topic of your choice (Coursework unit)

## Skills/Aptitudes Developed/Required:

A Level History is a challenging course which builds upon the skills you have gained at GCSE. The course is recommended for those of you who have a fascination with the past which has shaped us and wish to understand the diverse issues of the world you live in. The present is only fully understandable through a study of the past. The focus is on detailed knowledge of events, interpretations of the past and analysis of contemporary sources. Good results will only come from reading a range of historians and texts.

To study History A Level you will need 5s in GCSE History and English. We will expect highly motivated students who have a proven record of good conduct in their GCSE classes. All must have demonstrated organisation and reliability in their GCSE studies.

## Additional Considerations:

Year 12 History students have the opportunity to go on an optional trip to Berlin for 4 days. The cost will be approximately £290.



## Progression Post-18

A Level History has much to offer and fits in with a wide range of other A Level courses (Sciences, Geography, English, Sociology, Technology), and is regarded by colleges, universities and employers as evidence of a student's ability to handle information, to think and to express her or himself clearly.

Many of our students go on to study either History itself, or Law, Politics, Philosophy, Psychology and Education (or combinations of these subjects) at colleges and universities.

History is particularly relevant for careers in journalism, law, broadcasting, government and administration in all its aspects. Any career that demands independent thinking and an ability to see all sides of the issue will benefit from A Level History skills.



# ICT Cambridge Technical Level 3

Contact Person: Dr N Jessop

## Course Outline:

5 units - 3 mandatory (Units 1, 2 and 3) + 2 Choice units (both of which are coursework)

### Mandatory Units:

#### Unit 1: Fundamentals of IT (Externally Examined)

In this unit you will gain a sound understanding of IT technologies and practices that are essential for IT professionals. The unit includes the fundamentals of hardware, networks, software, the ethical use of computers and how business uses IT.

#### Unit 2: Global Information (Externally Examined)

In this unit you will develop a greater understanding of how organisations use information sources both internally and externally and the types of information you will encounter. The skills gained by completing this unit will give you knowledge of the functionality of information and how data is stored and processed by organisations.

#### Unit 3: Cyber Security (Externally Examined)

This unit has been designed to enable you to gain knowledge and understanding of the range of threats, vulnerabilities and risks that impact on both individuals and organisations. You will learn about the solutions that can be used to prevent or deal with cyber security incidents resulting from these challenges.

## Skills/Aptitudes Developed/Required:

Excellent time management to meet deadlines.  
Keen interest and enjoyment of ICT and its ever changing role in society. 5 GCSEs at 4 and above, preferably including English Language.

## Additional Considerations:

Logical thought, organisational skills and the ability to problem solve will be an advantage. You do not have to have studied Information Technologies at Key Stage 4 .

## Progression Post-18

Students will study the concepts associated with the use of ICT in the 21st Century. They will also have opportunities for acquiring skills needed in the IT profession, such as co-operative working and project management. These practical skills can be developed in areas of ICT that are of interest to them. Students can also use these newly acquired skills as a springboard into other higher qualifications and for working environments.





# Maths - A Level

Contact Person: Mrs R Coates

## Course Outline

Year 12

Pure Mathematics - Proof, Algebra & Functions, Co-ordinate Geometry Sequences & Series, Trigonometry, Exponentials & Logarithms, Differentiation & Integration, Vectors  
Statistics - Statistical Sampling, Data Presentation & Interpretation, Probability, Statistical Distributions, Statistical Hypothesis Testing  
Mechanics - Quantities and Units, Kinematics, Forces and Newton's Laws.

Year 13

Pure Mathematics - development and extension of Year 12 topics  
Statistics - development and extension of Year 12 topics  
Mechanics - development and extension of Year 12 topics

## Skills/Aptitudes Developed/Required:

You must be a good mathematician, with grade 7 or above at GCSE level. If you are in set one in Year 11 it is likely that this course will suit you.

Algebraic fluency is a priority, as are strong organisational and time management skills. Most importantly you must enjoy maths!

## Additional Considerations:

You may be considered for this course if you have a really high grade 6 at GCSE level and your algebraic manipulation is strong. All students will have to complete a pack of work over the summer and will be given a short test in one of your first lessons in September. This is to ensure that you start the course with a strong foundation and therefore go on to be successful.

## Progression Post-18

Maths is essential for many degree courses besides a Mathematics degree and is desirable for many more. These include Chemistry, Physics, Biology, Computer Science, Technology, Engineering, Geography, Economics, and Psychology.

Maths also supports many other courses and careers, for example accountancy, actuarial work, banking, computing, MORSE and management.

Whatever employment or further education is pursued, Maths AS/A2 is highly respected and research suggests that people with A-level Mathematics may earn up to a third more per annum than those who don't have it!



# Further Maths

## AS + A Level

Contact Person: Mrs R Coates

### Course Outline:

#### Year 12

Further Pure Mathematics - Proof, Complex Numbers, Matrices, Further Algebra & Functions, Further Calculus, Further Vectors  
Decision Mathematics - Algorithms & Graph Theory, Algorithms on Graphs, Critical Path Analysis, Linear Programming  
Further Mechanics - Momentum & Impulse; Work, Energy & Power; Elastic Collisions in 1D

#### Year 13

Further Pure Mathematics - development and extension of Year 12 topics, plus Polar Coordinates, Hyperbolic Functions and Differential Equations.  
Decision Mathematics - development and extension of Year 12 topics  
Further Mechanics—development and extension of Y12 topics, plus elastic strings and springs

### Skills/Aptitudes Developed/Required:

You must be a very good mathematician, with a high grade 7 or above at GCSE level. Algebraic fluency is a priority, as are strong organisational and time management skills. You must also be studying Maths.

### Additional Considerations:

This is a highly respected course that compliments A Level Maths perfectly. There is a misconception that Further Maths is harder than A Level Maths but generally this is not the case particularly at AS level; the units studied have different content and explore different areas of mathematics. You do not need to be a mathematical genius to succeed in this course; you just need to be interested in mathematics and enjoy a challenge!

## Progression Post-18

Maths is essential for many degree courses besides a Mathematics degree and is desirable for many more. These include Chemistry, Physics, Biology, Computer Science, Engineering, Geography, and Economics. Further Maths particularly supports future studies in Maths, Science, Technology and Engineering.

Maths also supports many other courses and careers, for example accountancy, actuarial work, banking, computing, MORSE, and management.

Whatever employment or further education is pursued, Maths A Level is highly respected and Further Maths AS/A Level will open many doors.

# Media Studies - A Level

Contact Person: Miss G Britton

## Course Outline:

A Level Media Studies engages you in the academic in-depth study of media products in relation to four key areas: Media Language, Media Representations, Media Industries, Media Audiences.

### You will study the following media forms:

Television, Film, Radio, Newspapers, Magazines, Advertising and marketing online, Social and participatory media, Video games, Music videos.

You will also explore these media forms in their cultural, social, historical, economic and political context; exploring why these products are the way that they are and what messages they give us about the world.

### Assessment:

Paper 1 - Questions will focus on advertising and marketing, music video, radio, newspapers and film.

Paper 2 – Questions will focus on magazines, online, social and participatory media and video games.

Both exams are 2 hours and are each worth 35% of the A Level grade. There is a variety of question types and length. You will answer questions about unseen texts as well as a wide variety of media products set by the exam board that we will study in advance of the exam.

Non-Exam Assessment: Choice of 6, annually changing briefs set by the exam board. You will create a cross-media production (more than one media product, e.g. a film trailer and website) for an intended audience.

### Skills/Aptitudes Developed/Required:

You will need to be interested and excited by the media. You will enjoy debate and discussion about theories and ideas related to the media. You will develop analytical and research skills. You will need practical media skills or a willingness to develop them.

### Additional Considerations:

Grade 5 in English GCSE. You must also complete the holiday task set in Induction Week. You do not need to have done GCSE Media Studies. You do not need to own any specialist



## Progression Post-18

If you are considering a career in the media industry, we recommend creating a showreel of work and organising work experience in media-related workplaces.

A variety of university courses involving either practical work such as film production, sound engineering or theoretical work or a combination of the two. There are some apprenticeships available in the creative industries e.g. at the BBC although there is considerable competition for places.

Wide range of possible career progressions in film/TV /production/post-production, marketing and advertising, digital marketing, PR, journalism, etc.

For those entrepreneurs amongst you, having some experience of understanding the media/ making media products should help you market your own business venture.

# Photography - A Level

Contact Person: Ms R Davies

## Course Outline:

This course will introduce you to photographic techniques and thinking, enabling you to explore a range of potential outcomes. You will learn camera control (digital and traditional), Photoshop techniques, and traditional darkroom skills to print images. You will be expected to plan, resource and develop projects in an increasingly independent manner, with the aim of communicating your creative ideas in the photographic form of your choice.

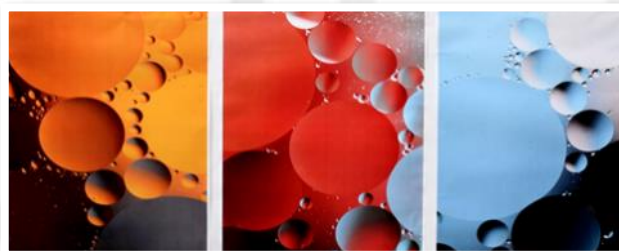
There are two units of work to complete each year. In Year 13 these are 'Component 1: Personal Investigation' and Component 2: Externally Set Assignment'. During the Personal Investigation you are required to conduct a practical investigation into an idea, issue, concept or theme, supported by written material (between 1000-3000 words). The Externally Set Assignment is published by AQA in February of each year, and following a preparatory period of work you will undergo a 15 hour (3 day) supervised exam, during which you will culminate your investigation.

## Skills/Aptitudes Developed/Required:

A high level of commitment is needed, as you will be expected to work independently. You will have to take many photographs in your own time, and not just during lessons. Workbooks/journals and personal research are essential, and form an important part of your assessment. Entry requirements are a grade 4 in Photography GCSE. Grade 4s in Fine Art will also be considered if evidence of an active interest in Photography can be shown.

## Additional Considerations:

We expect Photography students to make regular visits to local photographic exhibitions, to read reviews, and to keep up to date with contemporary creative thinking.



## Progression Post-18

Foundation Course Diploma in Media Arts (diagnostic courses designed to help students to target a specialist area for study within the Arts). Degree Level Course in Photography, Art, Design and Graphics.

Careers in any number of creative industries: galleries, education, design, media, advertising.



# Physical Education - A Level

Contact Person: Miss J Wild

## Course Outline:

A Level PE aims to provide you with a global understanding of sport and exercise combining scientific, psychological, social and practical concepts. The course will:

- enable you to know about, understand and analyse the major concepts and principles underlying physical education and sport;
- develop an understanding of the historical, physical, social, cultural and psychological factors which influence sport and physical education; and
- encourage the understanding of theoretical principles through practical examples.

## Assessment

The theory content comprises of 70% of the total marks. This examines the physiological, psychological and social cultural concepts. The remaining 30% is assessed through practical performance (15%) and the ability to analyse and evaluate performance (15%). This can be completed in a written or interview format. You will be required to demonstrate your practical and theoretical application as a performer or a coach. (Please refer to specification for sporting categories recognised by AQA.)

## Skills/Aptitudes Developed/Required:

You are expected to achieve a grade 5 or higher in GCSE Science, 5 for GCSE PE, English, Maths or Distinction in OCR Level 2 Sports Studies. You must be ICT literate and are required to be participating in sport regularly to at least club standard. Excellent time management skills and the ability to manage your own time and meet deadlines are key to being successful in the practical element.

## Additional Considerations:

Students who have not studied Sport at KS4 will be considered on a case by case basis, and will need to meet all other criteria identified above. Coaching and leadership courses will be available throughout the year at varying costs (optional).



## Progression Post-18

Previous candidates have progressed to higher education studying courses ranging from recreation management, exercise science, sports psychology and physiotherapy. Career prospects are continually expanding within a growing industry and include occupations such as leisure management, sports therapy, teaching, coaching, exercise consultancy and health promotion.



# Physics - A Level

Contact Person: Mr T Smith

## Course Outline:

Physics, also known as 'Natural Philosophy', is the study of nature and the universe in the broadest sense. It is at the heart of everything, and is a highly rewarding discipline to study. Physics is the foundation of technology, and has influenced the whole of our culture. This AQA specification has been developed in consultation with leading universities to provide students with the essential skills and knowledge required for degree level study, whilst incorporating interesting contemporary applications of Physics. Practical work is at the heart of the course, and the final option module allows students to focus on the topics that really engage them.

The course is taught through a mixture of teacher led sessions, practical problem solving, research and IT work, all designed to promote curiosity and develop independent study skills.

Candidates of this course are offered the exciting opportunity to take a trip to the Large Hadron Collider, CERN, Geneva (fees apply) which runs biennially.

### Year 12

- Students are introduced to Advanced Level Physics through a topic focussed on Measurements and Errors
- Students study 4 core modules across the year, including Particles and Radiation, Waves, Mechanics and Materials, and Electricity.
- Practical skills are developed through a series of activities which will be assessed in the exams

### Year 13

- A further 4 core modules are studied including Further Mechanics, Thermal Physics, Fields and their Consequences, and Nuclear Physics
- Students have an opportunity to choose an option from Astrophysics, Medical Physics, Engineering Physics and Turning Points in Physics
- An additional series of student led practical activities consolidates and enhances student critical thinking and problem solving.

Assessment - The course is fully assessed through final 3 exams in the summer term, each 2 hours.

- Paper 1 – Topics 1-5 + Practical skills – 34%
- Paper 2 – Topics 6-8 + Practical skills – 34%
- Paper 3 – Practical skill + Option topic – 32%

Examinations consist of short and long written answer questions, extended calculations, multiple choice, and questions focusing on practical skills and analysis.

Successful completion of a practical work lab-book to an acceptable standard rewards students with a 'Practical Endorsement'. Whilst this does not contribute to the overall mark, it is essential for many practical science and engineering university courses.

## Skills/Aptitudes Developed/Required:

- Assessing the validity, reliability and credibility of scientific information
- Using safe and skilful practical techniques and processes
- Making and recording reliable measurements with appropriate accuracy and precision
- Communicating scientific understanding through report writing and presentations
- Solving problems through methodical and logical application of mathematics

## Entry Requirements

Grade 6 or above in GCSE Science or Physics + Grade 6 or above in GCSE Mathematics. Those who are not entering for three separate sciences may wish to seek advice from their teachers regarding their readiness for the demands of the A-Level course.

## Progression Post-18

Previous A Level Physics students have gone on to study a range of scientific and non-scientific courses at university. These include: mathematics, aerospace engineering, music, astrophysics, electrical and mechanical engineering, audio technology and engineering



# Politics - A Level

Contact Person: Mr I Jones

## Course Outline:

The A Level Politics encourages you to:

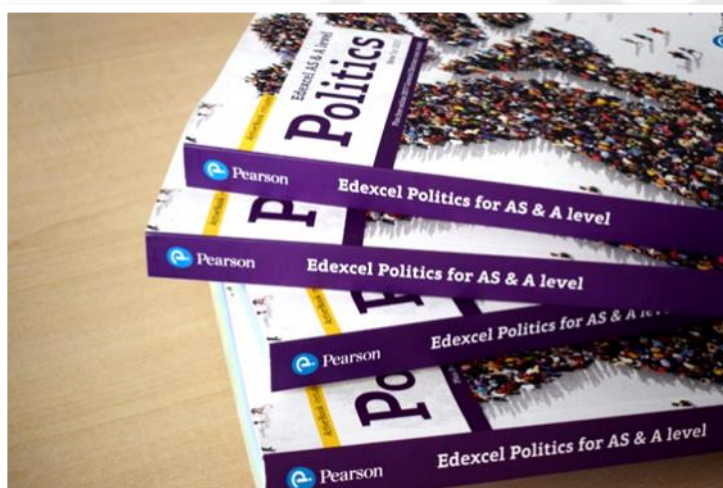
- Examine the structures of power and authority in the UK and in global politics
- Enjoy researching and discussing current affairs
- Develop a broad knowledge and understanding of the political system of the UK, including local government and the UK's relationship to the European Union

### Year 12 (50% A Level) Mock Exam paper of 2 hours

1. Political Parties
2. Pressure Groups
3. Elections
4. Voting Behaviour
5. Constitution
6. Parliament
7. Prime Minister
8. European Union

### Year 13 (50% of A Level) 3 Exam Papers at 2 hours each

1. Theory of power and human nature
2. Globalisation and nations
3. Human rights
4. The environment
5. The European Union



## Skills/Aptitudes Developed/Required:

The course encourages you to develop your capacity for critical thinking, to see relationships between different aspects of government and politics and to perceive your field of study in a broader perspective (including some comparisons with other political systems). Finally you will develop your knowledge and understanding of relevant political concepts and processes.

## Additional Considerations:

You will be given the opportunity to visit important political institutions like the Houses of Parliament, Whitehall and the Supreme Court in London in order to gain a thorough understanding and first-hand experience about how power is exercised in the United Kingdom.

## Entry Requirements:

Ideally students will have achieved a broad range of GCSE at grade 5 and above. For students who do not meet these requirements decisions will be made on the basis of the individuals potential by the curriculum leader.

## Progression Post-18

A Level Politics provides an excellent academic and skill base for a wide range of university courses and careers. The various skills required by the specification provide opportunities for progression directly into employment but equally contribute to students' lifelong learning.

Government and Politics students have gone into a range of areas including law, journalism, the civil service and the police force.



# Product Design: 3D Design - A Level

Contact Person: Ms N Allright

## Course Outline:

You are encouraged to be innovative in your design creations and produce high-quality, modelled-prototypes of your products.

- Develop a critical understanding of the influences of technological activity, from a historical perspective and current practice.
- Learn to apply analytical and evaluative skills to a range of procedures and gain an understanding in industrial practices as well as relating to our future resource and environment needs.
- Use a variety of ICT CAD/CAM skills to communicate high quality design concepts during development.
- Work as independent researchers and make informed choices via detailed analysis.
- Cultivate positive attitudes of co-operation and work collaboratively.

## Skills/Aptitudes Developed/Required:

Excellent time management to meet deadlines. Keen interest and enjoyment of designing and the production of high quality, modelled prototypes of your ideas. To develop a toolbox of product analysis skills applied to the key concepts of function and ergonomics within everyday objects. To evaluate prototypes against specification and develop suitable modifications for industrial production. You are also expected to be in contact with a specialist in industry during the project to help with continuous feedback and development of your product.

GCSE grade 5 is required in Design and Technology or Engineering. GCSE grade 4 may be considered.

## Additional Considerations:

Relevant graphic equipment will assist the communication of design work, such as good quality blendable colour pencils, small selection of markers, fineline pens, etc.

A copy of the essential textbook 'AQA Design and Technology: Product Design' ISBN 978-1-5104-1408-2 approximately £28.00, is a pre-requisite of the course. Due to the ever-increasing price and variety of materials supplied, we request a small donation of £12 towards these costs.

## Progression Post-18

Successful candidates can continue into further education in related design fields, such as engineering, product furniture, graphic design, advertising, product design, architectural modelling, CAD/CAM operations, material applications, animatronics, ergonomics, anthropometrics, and all fields of design and manufacturing including one off craft designing.

Some design studios and companies may be prepared to take on students for modern apprenticeships or additional training to learn specific skills. The production of a high quality Design Portfolio during this course has assisted many students in interviews and selection procedures to initiate their careers in related subjects.



**Qualification: A Level Coursework: 50% Examination: 50%**

**Examination Board: AQA**

# Psychology - A Level

Contact Person: Mrs C Hastings and Mr I Jones

## Course Outline:

Year 12 Psychology follows a broad syllabus to introduce you to the subject. This includes the study of Cognitive Psychology (memory), Developmental Psychology (early social development of children), Social Psychology (conformity and obedience), Individual Differences (abnormality), Psychological Approaches and research methods.

Year 13 Psychology : This builds upon the knowledge base of AS (studied by all students in Year 12) when a choice of topics can be studied (e.g. biological rhythms and sleep, relationships and aggression). This includes the further study of mental disorder and research methods with an exciting new section of Psychology in Action (including the study of Schizophrenia).

## Skills/Aptitudes Developed/Required:

Writing - You will need to be able to analyse a wide variety of materials including written texts, research studies and articles. You also need to be able to write in a fluent and concise style, therefore it is required to have grade 5+ in both English subjects.

Science/Maths – To study for the two year A Level, you must be competent at Science and Mathematics. Therefore you are required to have a grade 5/6 in Double Science or grade 5,5,6 in Triple Science (with a 6 in Biology). You will need at least a grade 4 in Maths to cope with the mathematical component of the exam, and two grade 5s in English Language and English Literature.

Good Communication Skills - to express yourself verbally and in writing.

## Additional Considerations:

You should be interested in understanding peoples' behaviour and also the scientific enquiry of such.



## Progression Post-18

Higher Education degree in Psychology, related medical and social science programmes, business studies, teaching, media, sports psychology/science, BTEC Higher National Certificate/Diploma in Counselling/Health and Care.

Direct employment such as in caring professions, occupational and media sectors. Progression on to next level of vocational qualifications, especially into care, sports, management and media sectors.



# Philosophy, Ethics and Religion - A Level

Contact Person: Mr I Jones

## Course Outline:

The A Level in Religious Studies is an engaging, interesting and thought provoking study of the three main components of religion.

### Component 1: Philosophy of Religion

You will study ancient philosophical influences:

- The nature of the soul, mind and body
- Arguments about the existence or non-existence of God (Theism v Atheism v Agnosticism)
- Is religious experience real or just wishful thinking
- How does religious experience affect people's individual actions
- Issues in religious language

### Component 2: Religion and Ethics

You will study:

- Different theories about *how* humans should make moral and ethical choices
- Opportunity will be given to apply ethical theory to two contemporary issues such as Abortion, War, Capital Punishment etc
- Consideration of whether or not we have a conscience

### Component 3: Developments in Religious Thoughts

You will study how **one** of the following religions have developed over the centuries:

- Christianity
- Islam
- Judaism
- Buddhism
- Hinduism

## Skills & Aptitudes Developed:

This course, offered by OCR, is unique as it combines the best of traditional A Level Religious Education with the best of the 'stand alone' Philosophy A Level. Students interested in both religious belief and human philosophy will, in studying this subject, get the best of both. This is a course for those interested in human beliefs and would like to consider in more depth the 'big' questions in life.

Questions such as; Do I have a soul? Does God exist? How do theists square the problem of evil? Do I exist in soul, mind and body? In addition you will become experts in how religious thinking has developed and how it still has a significant impact on how people think and act today.

## Entry Requirements:

Ideally students will have achieved a broad range of GCSE at grade 5 and above. For students who do not meet these requirements decisions will be made on the basis of the individuals potential by the curriculum leader.

## Progression Post-18

Universities and employers consider Religious Studies as a subject that develops high level thinking skills, equipping students with analytical and critical ability. Religious Studies is a rigorous academic course that requires students to think philosophically, use skills similar those required in the study of history and do empathise with others who may have different religious beliefs from their own.





# Sport and Physical Activity

## OCR Cambridge Technical Level 3 Extended Certificate

Contact Person: Miss J Wild

### Course Outline:

OCR Sport and Physical Activity aims to provide you with a global understanding of sport and exercise combining scientific, psychological, social and practical concepts.

This course will:

- Enable you to know about, understand and analyse the major concepts and principles underlying physical education and sport;
- Develop an understanding of the historical, physical, social, cultural and organisational structure of sport factors
- Encourage the understanding of theoretical principles through application

Assessment:

The course consists of 3 mandatory units which examine

- The anatomy and physiology of the body\*
- Sports organisation and development,
- Sports coaching and leadership\*

\*These two units are assessed via 2 examinations. The remaining time is spent studying optional units which will be selected based on the strengths of the individual cohort and the facilities. Please refer to the specification for further information on the optional units.

### Skills/Aptitudes Developed/Required:

You are expected to achieve a grade 4 or higher for GCSE Science / PE / English / Maths or Merit in OCR level 2 Sports Studies. You may be ICT literate and are required to be participating in sport regularly to at least club standard. Excellent time management skills and the ability to manage your own time and meet deadlines are key to being successful in the coursework.

### Additional Considerations:

If you have not studied a sports course at Level 2 you will be considered on a case by case basis, and will need to meet all other criteria identified above. Coaching and leadership courses will be available throughout the year at varying costs (optional).



## Progression Post 18

Candidates can progress to higher education courses ranging from recreation management, exercise science, sports psychology and outdoor and adventurous activities (degree and foundation levels). Career prospects are continually expanding within a growing industry, and include occupations such as leisure management, sports therapy, teaching, coaching, exercise consultancy and health promotion.

# Sport and Physical Activity

## OCR Cambridge Level 3 Technical Extended Diploma

Contact Person: Miss J Wild

### Course Outline:

**Students will study the following mandatory units:** • Body systems and the effects of physical activity • Sports coaching and activity leadership • Sports organisation and development • Working safely in sport, exercise, health and leisure • Performance analysis in sport and exercise • Physical activity for specific groups • Nutrition and diet for sport and exercise • Sports injuries and rehabilitation • The business of sport • Improving fitness for sport and physical activity • Organisation of sports events • Working in active leisure facilities • Practical skills in sport and physical activities.

These units are related to key aspects that underpin how sport and physical activity is delivered and organised and developed as a business, such as anatomy and physiology in relation to physical performance; coaching skills; the structure of sport in the UK and the organisations involved; the target groups that would most benefit from participation in physical activity and why; and safe practice and delivery in sport and leisure.

Learners will study how different types of business in sport operate including how they measure success, why volunteers are so important to the sector and how they are recruited and managed, how sport businesses ensure sustainability and how they access different sources of funding. Learners will also study how to analyse performance using different methods and how to support people in maintaining a fitter, healthier lifestyle. In addition to this, learners will develop transferable skills that employers are looking for such as planning, communication and organisation skills.

**An additional four optional units from the following:** • Group exercise to music • Biomechanics and movement analysis • Health and fitness testing for sport • Sport and exercise psychology • Sport and exercise sociology. These units will support learners in developing additional skills, knowledge and understanding which will allow them to deliver a wider range of sports and physical activities and support development in those sports or activities. They will also develop learners' understanding of the sociological and psychological impacts that participation in sport and physical activity can have as well as the benefits of and barriers to participation and how to overcome these.

### Assessment:

Learners will take 17 units, made up of mandatory and optional units. Four of these units will be assessed in the form of exams, the others units will be assessed through coursework.

### Other Considerations:

The Extended Diploma is a Tech Level qualification (meaning it will prepare learners for employment). This means it is equivalent in size to three A-levels and awarded the same UCAS points. It will form a complete two-year study programme and is recognised by all universities in your progression to higher education or an apprenticeship. You must achieve a pass grade or above in all units and will be awarded at pass, merit or distinction level. The course is designed to be studied solely and not necessarily alongside any other A-Level or vocational qualifications.

### Entry Requirements:

5 GCSEs at Grade 4 or above, including English, Maths, Science and PE.

## Progression Post -18

It can lead to study at university/ apprenticeships/careers in personal training, instructor qualifications, coaching and leadership, sports development, sports management, sport and exercise science. It is always advisable for students to check what qualification are accepted for routes they wish to pursue in employment or higher education courses

## Notes:

"Our students achieve excellent grades and go on to take up offers of apprenticeships and to attend some of the country's top universities. Every year it is a delight to share in our students' successes and excitement about their futures."

Head of Sixth Form,  
Mr Jon Reddiford  
2019



## Notes:

"Our staff open up extraordinary opportunities for all of our students which allow them to make ambitious choices and to flourish in a future of their own making. I am extremely proud of the achievements of all of our Sixth Form students and the commitment shown by our team. It is a privilege for us to be a part of shaping such exciting futures ."

Headteacher,  
Mrs Dee Elliott  
2019



# Nailsea School Sixth Form

Mizzymead Road | Nailsea | North Somerset | BS48 2HN | [www.nailseaschool.com](http://www.nailseaschool.com)

