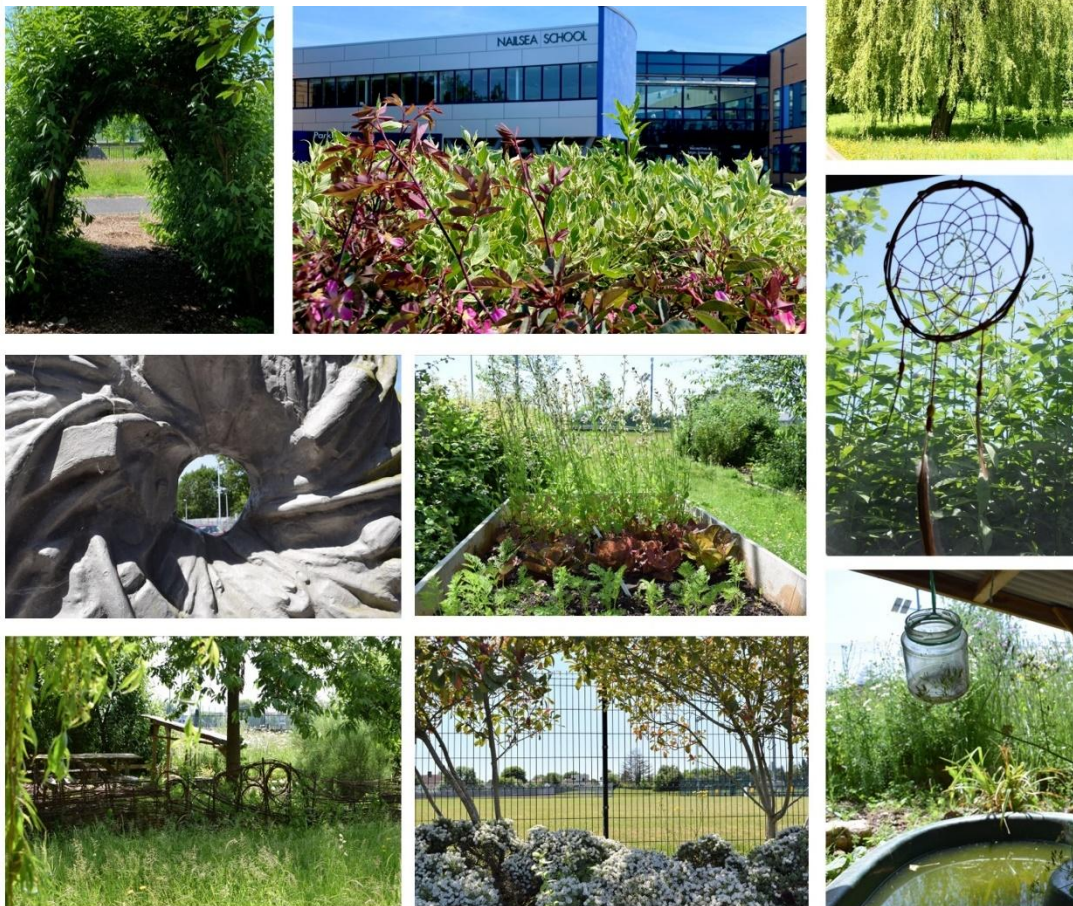


ASPIRE | BELIEVE | SUCCEED



Parents Handbook 2026



**Nailsea School
& Sixth Form**
Aspire | Believe | Succeed

CONTENTS

Headteacher's Welcome	4
Pastoral Team's Welcome	5
Year 7 Welcome.....	6
Advice for Parents of New Students.....	8
A-Z.....	9
Anti-Bullying	9
Assessments	9
Attendance and Punctuality	9
Why is attendance important?	9
Who authorises absence?	9
Appointments.....	10
Holidays.....	10
Reporting absence	10
Punctuality	10
Behaviour	10
Calendar	11
Cardkey.....	Error! Bookmark not defined.
Communication	11
School Comms	Error! Bookmark not defined.
Parentpay	11
Class Charts	Error! Bookmark not defined.
Reports	11
Weekly School Bulletin.....	11
Newsletters	11
Social Media	11
Concerns.....	11
Contacts.....	12
Key staff:.....	12
Dining Services.....	13
Enrichment	13
Equipment	13
Expectations	13
Fire and Lockdown Alarm	14
First Aid.....	14
Homework	14
Home-School Agreement	15



House System	15
Lockers.....	15
Lost Property	15
Musical Tuition	15
Parents Evenings	16
Payments.....	16
Personal Items	16
Policies.....	Error! Bookmark not defined.
PTA.....	16
Pupil Premium Funding	17
Reports	17
School Day	17
Special Education Needs	17
Student Voice	18
Student Wellbeing	18
Child Protection.....	18
Teaching Groups.....	18
Team Nailsea	18
Travel	19
Uniform	19
School Togs	20
Voluntary Contribution to school funds	21
Wessex Learning Trust.....	21



Headteacher's Welcome

It is with great pleasure that I welcome you to your first year at Nailsea School and hope that it will be a happy and successful one. I feel very honoured to be welcoming you to this fantastic school. I can promise you that I will endeavour to work hard for you and always do my best, just as I expect from other staff and students.

The ethos at Nailsea of 'Aspire Believe Succeed' is underpinned by our aim to educate your child to achieve their full potential in every aspect of school life. Every member of Team Nailsea is encouraged to contribute to its life and success and to provide a happy and stimulating environment where everybody's potential is fully realised. Ambition, respect, kindness, pride and community are the school's core values.

At Nailsea we provide a caring and happy environment which helps facilitate the smooth transfer from the many primary schools that we work with. Our students are given opportunities to develop their academic, musical, artistic, sporting and personal and social skills to the full. We aim to give students the confidence to progress successfully through the school, and to become capable and considerate young people who take responsibility for their own futures.

Together we will work in partnership with you to ensure that your child's time with us is rewarding, fun and, above all else, happy. Welcome to Team Nailsea!



Mrs Dee Elliott
Headteacher



Pastoral Team's Welcome

Houses and Tutor Groups

We would like to take this opportunity to welcome Year 6 students to Nailsea School. We are the House team. There are 4 Houses: Dragon, Griffin, Phoenix and Unicorn. House tutor groups contain a mix of students from years seven to eleven and we have found this system works really well. This gives students a chance to mix with and make friends with those in different year groups, as well as their own.

We have a thirty-minute tutor time three times a week, as well as one assembly where all tutor groups come together. In tutor time you'll be doing a range of activities with your tutor and tutor group. This might include planning tutor group assemblies, working on the ABSolute Curriculum, tutor group projects, doing quizzes, class discussion on current issues and checking House Points. The final tutor time session is an Extended Tutor time of 40 minutes where we cover topics from within the personal development curriculum. Here you will be in a different group of students, of the same age, so that topics can be covered in an age appropriate way.

We aim to work together to try and help each other achieve our very best. Our collective ethos is to 'celebrate effort, success and achievement at all levels and across all areas of the School'. This also includes any effort, success and achievement made outside of School. We want you to be part of this ethos and make every effort to be the best you can be. We will do everything we can to help you do this.

Griffin



Mrs Vass

Dragon



Mr Miles

Phoenix



Mrs Wisby

Unicorn



Mr Reid



Year 7 Welcome

We know that starting secondary school can be a bit daunting. We asked a group of Year 7s to think back to when they were in Year 6:

Things we wish we'd known when we were still in Y6

On the first day there are only Year 7s and Year 12s in school so everyone is new. The first thing you do is meet with your tutor and they give you lots of help and advice to settle in. My tutor showed me how to colour code my timetable with the same colours as the paint in school so this helped me find my way around.

I wish I'd known how good the food was here. I'm a really fussy eater and thought I would only like pizza. The food at Nailsea School is delicious – it's amazing.

I thought there was going to be loads of homework crammed in and due the next day. In Year 7 it's simple, you only get a few bits per week.

It is not as scary as you think. I only knew 3 people before I came, but the Year 6s I met from other schools on Induction Day I am still friends with today.

Highlights of Year 7 so far

The first time in the Superlabs was amazing. I really enjoy Science now especially when you get to use things like the Bunsen Burners.

Making new friends and meeting people has been a highlight. I made a new friend at the Year 6 BBQ and we've been friends ever since. There are lots of different ways to meet people.

Technology is really interesting because you get to try a variety of things. I've made a camping stove and a glass coaster so far.

You get to do lots of different subjects. Each topic flows into the next and you suddenly realise you've learnt a lot. In Science we've just learnt about bacteria, swabbing different parts of the Superlab and proper scientific investigation using petri dishes and thumbprints.



Our successes in Year 7 so far

I feel challenged a lot but I feel comfortable because I'm used to that now. It feels good to know that even if something is difficult if I just get on with it, I can get things done.

Algebra I was a bit worried about as I thought I wouldn't get it but they've explained it really well and I find it totally straightforward now, even enjoy it a bit.

Rewards events are organised for students with lots of house points. There is one big one each term and the rewards change so you have something different to aim for each time. The last one was organised by the Y11 Business Studies students and it was really good fun.

My biggest success was moving up in my Maths set. I started the year in a lower set and was so sad about it but once I started, in every single lesson I got extension work because I understood everything. My teacher came to me one day and said they were moving me up to middle set. I've made massive progress.

Top Tips

Don't be afraid to ask questions. On Induction Day you meet the student leaders and they show you round so talk to them as that's the ideal time to find out what you need to know.

Aim to arrive at school 10 minutes before the bell then you have time to go to your locker and get sorted before school starts.

Don't forget always have a reading book in your bag ready for English lessons.

Don't worry about the classrooms. I got lost once and the corridors were empty, I saw a 6th Former so I asked them and they took me to where I needed to go. You remember the rooms really quickly by knowing roughly where the subjects are so you know where to head for.

Parents just need to worry about taking a photo at the beginning of the school year and having a little cry about their child joining Year 7. There is nothing else to worry about!



Advice for Parents of New Students

Starting secondary school is a time of excitement and fear in equal measures.

For a parent the key is trying to achieve the right balance of support and encouragement whilst allowing students to find their own way and develop their identity.

By making their own way in school, students make friends and bond with their peers. They build friendships by the shared experience of discovering together and finding out information. This discovery stage can be quite exciting and full of a sense of achievement which boosts their confidence. Parents should try to let their child experience this by encouraging them to ask questions and seek information themselves rather than relying on a parent to contact the school.

Students benefit from learning to be independent, by discovering, exploring, gaining confidence, communicating with peers and with staff, asking questions, and developing an understanding of their own strengths and weaknesses. In order for this to happen parents need to take a step back and give students the space to grow.



A-Z

Anti-Bullying

We have a strong anti-bullying policy in place. Any incident of bullying is investigated promptly and any necessary action taken. Students are educated through the ABSolute programme about how to recognise bullying and understand the consequences of negative behaviour. Students are taught how to handle incidents of bullying, how to recognise and challenge the negative language often used around bullying incidents and where to report or seek help. Staff attend training on how to spot the signs of bullying and challenge unacceptable behaviour.

Students join us from over 25 different primary schools and starting at Nailsea is an opportunity to meet new friends, join new groups and for those that feel they have been bullied in the past or perhaps know that they have bullied others, starting at Nailsea is a chance to put the past behind them and start afresh.

The school values underpin the expectation that students support and champion each other, respect and value each other and demonstrate tolerance and consideration towards others.

Assessments

Initial assessments in the first weeks of Year 7, Term 1, are used alongside KS2 scores and teacher assessments from primary schools to inform targets and setting from Y7 onwards.

Subjects assess progress periodically and the results are fed back to parents in reports and are used to inform discussions at parents' evenings.

Attendance and Punctuality

Why is attendance important?

Regular attendance is the key to your child's progress and achievement and is a good habit to build to take forward into the working world.

Our expectation is that students attend 100% of the time. Parents/Carers are legally responsible for their child's attendance in school every day.

- 90% attendance means a student misses half a day every week. Over five years this results in half a school year missed.
- Department for Education (DfE) research shows that 17 missed school days in a year will result in at least one whole GCSE grade drop in achievement.

Who authorises absence?

The school is permitted to authorise absence for illness, medical reasons, and exceptional circumstances. All other absences will be marked unauthorised. A family holiday is not normally considered by the Government to be an "exceptional circumstance" and therefore will not be authorised.

Unauthorised absences occur when:

- Leave has been requested but the school is unable to authorise
- Leave is not requested but the child has been taken out of school anyway
- Reason given for absence is not genuine
- Late arrival to school after registration has closed

When attendance falls below 95% the school will make contact with home. If attendance continues at an unacceptable level then the school policy is to refer to North Somerset Education Service who will issue penalty notices.



Appointments

Appointments should be made where possible outside of school hours. For unavoidable appointments please notify the school via your child's tutor in advance of the appointment time.

Students should come to the main School Reception at the appropriate time to sign out.

Holidays

In line with Government directives, no in term holiday requests will be authorised unless there are exceptional circumstances. Holiday request forms are available from main Reception or the Heads of House office.

Reporting absence

If your child is to be absent, please let the school know via the Student Absence Line 01275 850400. Please call daily until your child returns to school or inform the school via your child's tutor if it is for a set or long term absence.

Punctuality

Being on time is an important part of self-discipline and an essential employability skill. Students are expected to be in school by 8.20am. School starts with Tutor Time at 8.30am.

Students arriving late will need to sign in at Reception. They will be asked to give a reason for their lateness and a breaktime detention will be set. Persistent lateness will be followed up by the pastoral team.

Behaviour

The basic expectation of the school community is that we treat each other and our buildings with respect and care. This is part of our school ethos.

We work hard with our students to ensure standards of behaviour are maintained.

It is important students follow the uniform guidelines and staff will pick up on any failure to follow school uniform rules.

Students are expected to arrive on time for lessons and be prepared with the necessary equipment.

Students must behave in lessons, be ready to listen, discuss, question and contribute.

Students should travel around the school site in an orderly manner, no running, keeping to the left in corridors and on the stairs to ensure their safety.

Students are the public face of the school within the local Community. We encourage our students to express their pride and membership of #TeamNailsea through their behaviour travelling to and from school and when in the community at large.

Students are rewarded and praised for positive actions, with opportunities to gain Reward Points in recognition of excellent work, attitude and contribution to school life. Behaviour that does not follow the school expectations will be sanctioned using the Behaviour Points and the Consequence System (C1-5) which includes detentions, internal exclusion and suspensions. Full details of our Rewards and Sanctions can be found in our Behaviour Policy on the school website.

Biometrics

All students are set up on our biometric system, which allows them to access areas of the school, and to pay for food and drink at break times using a thumbprint. Parents can top up funds via the MCAS app. Login details are issued by the Finance Department on the first day in September.



Calendar

At the start of each academic year a summary of key dates is published on the school website. Term dates are also posted for each academic year as soon as they are available.

Communication

The School Website can be the first point of call for any query. The answers to many of the questions we receive in school can be found on the website including diary dates, exam information, parents' evenings, uniform and more.

If you need to raise an issue or discussion, then your child's Tutor is the main person to communicate with in the first instance. Tutors monitor the achievement and progress of their students and look after their pastoral wellbeing.

You can contact the school via:

Phone 01275 852251 or email info@nailseaschool.com

The school communicates with home in the following ways:

MCAS (MyChildAtSchool)

- is used to keep track of your child's weekly timetable, view assigned homework tasks and track any detentions. All payments for lunch or for trips go through MCAS. All communications home are sent via MCAS. Information on how to set up the app is sent home once students start school in September.

Reports

- information on your child's progress is sent home twice a year via MCAS

Weekly School Bulletin

- a letter for families rounding up all the important information for the week is issued each Friday by the Headteacher via MCAS with copies placed on the school website

Newsletters

- a school newsletter is published each term covering news, activities, events and celebrating student achievement in school, this is sent home via MCAS

Social Media

- notices, updates and information are available by following the school Twitter account and Facebook page

Concerns

Realistic expectations about a new school may be useful to share with your child to prepare them, encouraging open discussions on any area they may be worried about. Starting secondary school is not going to be plain sailing for everyone. As a parent, trying to achieve a balance of not offering too much support so children can learn to sort things themselves, and knowing when there is a need to step in and help can be tricky.

Friendships and friendship groups are likely to change as your child starts a new school. Students meet new people, their field of experience grows and they change as a result. Your child may fall out with their friends. This is normal and although the process can be upsetting, this is a part of growing up and negotiating their way in the world. Often friendship issues are best left for the children to work things out by themselves – our experience is that adult intervention can sometimes make the situation worse, however students will be supported by the pastoral team if they are stressed or upset by the process.

Your child will experience a mix of **emotions** which can sometimes be new and overwhelming. The process of working through uncomfortable feelings enables students to grow, develop resilience and understand how to deal with any setbacks. This is a vital part of preparing students for the outside world and we would encourage parents to allow their child to experience this and learn how to manage the feelings themselves.



Students can worry and panic about their **learning** and homework. This is normal and good routines and organisation will help students feel more settled about their work. Subject teachers welcome students asking questions about their work and their progress for reassurance.

If your child's concerns are getting in the way of their enjoyment in school and you have worked through possible solutions together, then please contact the school in order that we can support a positive outcome for everyone.

Contacts

First point of contact is always the Tutor who will have a good overall knowledge of your child and their experience in school. If you have need to contact the school please email or call Reception info@nailseaschool.com and if they cannot advise they will direct to the right person according to your query.

In secondary school the line of communication is very different given that there are over 1200 families and it is not appropriate to go direct to the senior team as most queries and concerns can be addressed by staff closer to the students at department level.

The senior team below oversee curriculum and pastoral areas. If your communication is not dealt with by Reception or by the Tutor then it can be escalated to the relevant Head of Department or Pastoral Manager. If they are unable to resolve then they will refer to the Senior Team. If you are uncertain then Reception will be able to advise on the best person to contact.

Key staff:



Mrs D Elliott
Headteacher



Mr P Jones
Deputy Headteacher



Miss L Creswick
**Assistant Headteacher
Teaching and Learning**



Mr D Graffagnino
**Assistant Headteacher
Behaviour and Wellbeing**



Mrs S Ruddy
**Assistant Headteacher
Inclusion and Aspiration**



Mr D Truan
**Assistant Headteacher
Head of 6th Form**



Dining Services

Students can use their biometric thumbprint to pay for hot and cold food, snacks and drinks at break and lunchtime from any of the 3 different catering areas. By using MCAS parents will be able to see what items their child has purchased and how much money is left on their account.

A catering menu is published termly and food options change weekly. The menu is displayed on the school website and around school



Enrichment

The latest copy of the extra-curricular booklet with information about enrichment opportunities in school is available on the school website. This contains an overview of the clubs, groups and activities on offer at Nailsea School. Not all of the clubs run all of the year - so it's important to check with the contact about when and where they are running.

Extra-Curricular clubs are a great way to meet new friends, try new things and explore a passion outside of the classroom. Students should keep an eye on student noticeboards as new groups, clubs and activities are introduced throughout the year.

As well as managing our own extra-curricular activities a number of organisations use Nailsea School as a base for their own clubs and groups. Our partner organisation, The Link, works with the community to create a dynamic and broad programme of activities. More information can be found on their website, TheLink@nailseaschool.com.

Equipment

Students should have the following items with them each day:

- Sensible bag big enough to carry books and belongings
- Pencil case with pens, pencils, pencil crayons, rubber
- Water bottle
- Reading book
- Locker key

Expectations

#TeamNailsea Expectations:

I arrive on time, with the correct uniform and equipment.

I am responsible for my own behaviour and I respect all members of the community.

I try my best, at all times, to achieve my targets.



Fire and Lockdown Alarm

In the unlikely event of a fire or other emergency, an alarm will sound to alert staff and students. Any person inside the school building must take immediate action as directed by staff. Students are reminded they should never tamper with alarms and the deliberate setting off of an alarm is a very serious civil offence. The school undertakes regular Fire and Lockdown drills for the protection of the school community.

First Aid

If your child feels unwell they should tell their teacher or go to the First Aid room and should not contact home directly. If your child is taken ill in school we will contact you and ask you to come and collect them. The First Aid room is available for short time periods for students who feel unwell or who have a minor medical incident that needs attention.

We do not have a School Nurse on site, but the First Aid room is manned by first aid trained staff.

If your child has an existing medical condition please ensure the school is advised of this.

Inhalers

Your child should always keep their inhaler with them. A spare may also be kept in First Aid.

Medicines

The school is unable to dispense any form of medication unless it is prescribed. Please complete a medical form to inform the school of medicine that is required to be taken during the school day.

Homework

At Nailsea School, we believe that homework is an integral part of students' learning. The main benefits include:

- Consolidating and extending learning outside of the classroom
- Allowing students time to consider a subject in more depth; leading to a better understanding of key concepts
- Giving time to develop and practice skills such as problem solving, research and extended writing.
- Building independence, self-discipline and organisation skills which we value as important life skills

In addition, homework forms an important bridge between our school and parents. It provides you with opportunities to see what your child is learning and to support their attitude to learning through positive encouragement.

Teaching staff are mindful of the need to balance the benefits of homework with time for students to enjoy themselves outside of school. We do not have a set homework timetable (although as a minimum expectation, all tasks set will have a 3 day turn around). As a school, we strongly believe that homework should be relevant, challenging and meaningful and that it will only be set when it is appropriate to do so.

We offer a supported study space for those students who would benefit from attending to their homework in school.

How is it set?

Nailsea School uses MCAS to set all homework tasks. The app enables teachers to clearly explain the homework that has been set, suggest how long students should spend on it and be clear on when it is due in. Teachers can also upload help sheets and other resources needed to complete homework in order to support students in their independent study.

Information about how to access MCAS and the unique codes are shared once the student accounts are set up in September.

Parents will be sent a login in September which will provide them with access to MCAS where they will be able to see the homework set for their child as well as information on reward points, detentions, and more.



Home-School Agreement

Students, parents and the school follow a Home-School Agreement setting out the principles of the partnership. This agreement clarifies the role of each partner in optimising the chances of success for all students.



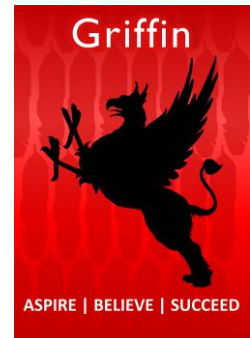
House System

All students and staff belong to one of four School Houses led by Heads of House, Senior Prefects, Prefects and School Captains. Originally chosen by students, the House names are Dragon, Griffin, Phoenix and Unicorn.

Throughout the year Houses deliver inter-house challenges, rewards events, celebration assemblies, fundraising events and the PSHCE ABSolute curriculum. Students are placed in vertical tutor groups within Houses where students from each year group meet at tutor time each day providing an excellent opportunity to mix with students from different year groups and learn from each other.

We encourage students to be active members of their House community, representing their House at Sports Day and other competitions, take part in fundraising activities and wearing their colours with pride. There is a friendly rivalry between Houses to secure the most House Points and win the House Championship trophy each year.

The House system is a fantastic opportunity for our students to involve themselves in a range of enrichment events but also to further foster positive relationships across all the year groups in our school community.



Lockers

All students in Nailsea School are provided with a secure locker for their sole use during the 5 years they are in statutory education. There is a one-off payment for the locker and details of how to make this payment will be sent out once students have started school in September. Lockers enable students to carry the minimum amount of equipment to lessons and provide somewhere safe to leave their belongings at break and lunch.

Lost Property

All lost property is based on shelves in the Atrium next to the student entrance. Named items will be returned to their owner but students who have lost an item can look through lost property at break, lunch or after school. To manage the facility unclaimed lost property will be donated to the PTA or to charity at the end of each Term.

Items of particular monetary or sentimental value should not be brought into school as the school cannot be responsible for the loss or damage to these items.

Musical Tuition

Nailsea School offers students the opportunity to learn to play musical instruments through both North Somerset Music Service teachers and private teachers. Specialist peripatetic teachers offer lessons on Piano, Woodwind, Brass,



Strings, Drums, Voice and Guitar. Research shows learning an instrument can enhance school grades across the board.

Lessons run throughout the school day on a rota so the same curriculum lesson is not missed. It is the responsibility of the student to catch up on any academic work missed and to remember the time and date of their lesson.

For more information on instrumental tuition please contact the Subject Lead for Music.

Parents' Evenings

Each year group has a set Subject Evening once a year when parents are invited to meet with their child's teachers to discuss progress and ask any questions. These evenings run virtually and information will be sent out a fortnight before the evening inviting parents to book their appointments through the booking system on the school website. Parents should not feel they need to make an appointment with every teacher. Teachers have a limited number of spaces for appointments but Parents are welcome to contact teachers at any time if they have any concerns or require extra information.

Payments

We aim to be a cashless school. The school uses an online payment system for any payments for lunch, trips and other school activities. Using the system is straightforward and provides an electronic record of all payments made to the school. You can view online how monies are being spent and how much credit is remaining.

Details of how to access this system plus activation codes are issued by the Finance Office once your child has completed their first day at school.

Personal Items

Mobile phones/devices must not be used in school and should be switched off and placed in bags before entering the school premises. Our slogan related to phones on site summarises the expectations: "Off and away for the whole school day." Any student found using a mobile phone or device will have it confiscated to collect at the end of the day. A subsequent offence will result in the device being confiscated and a phone call home to arrange collection.

We find the hiatus from using mobile devices lowers the stress levels of students, is a welcome break from the pressures of social media and improves communication skills.

The school cannot be held responsible for the loss or damage of any personal possessions. All clothing, shoes, watches and other property should be clearly named.

PTA

The Parent Teacher Association is a group that enhances the link between parents and the school. As the connection between parents and school is different at secondary school to that experienced at primary level, the PTA is one way to support the school, connect with other parents and be involved in school life.

The PTA organises a number of events and fundraising opportunities for the school throughout the year. They are an invaluable group of parent volunteers that provide much appreciated support for the school.

More information about the PTA is on the school website and they can be contacted via email, nailseapta@nailseaschool.com.



Pupil Premium Funding

Registering for Free School Meals also enables the school to access Pupil Premium funding which we use to help your child participate fully in all learning activities. This funding can also help pay for extra curricular activities and eligible pupils may also be invited to attend special events, workshops and activities which we feel would be beneficial to them.

If you have any questions about Free School Meals and Pupil Premium, or would like some help with your application, please contact Sophie Rutty at the school 01275 852251, srutty@nailseaschool.com.

Reports

Academic reports are issued twice a year providing information on the progress students are making in each of their subjects. Reports show scores indicating students' attitudes to learning, house and behaviour points.

School Day

Students follow a two week timetable with the school day structured as follows:

Mon, Wed, Thurs, Fri			Tues		
8:30 –	9:00	Tutor time	8:30 –	9:10	Tutor time
9:00 –	10:00	Period 1	9:10 –	10:05	Period 1
10:00 –	11:00	Period 2	10:05 –	11:00	Period 2
11:00 –	11:20	Break	11:00 –	11:20	Break
11:20 –	12:20	Period 3	11:20 –	12:20	Period 3
12:20 –	1:20	Period 4	12:20 –	1:20	Period 4
1:20 –	2:00	Lunch	1:20 –	2:00	Lunch
2:00 –	3:00	Period 5	2:00 –	3:00	Period 5



Special Education Needs

Students with SEN are those who experience significantly greater difficulty in learning than the majority of their peers or who have a disability which prevents or hinders them from making use of the educational facilities that are provided. These students require special consideration in terms of curriculum and teaching provision and support with exams. The intention is to enable all students, whatever their need, to benefit from access to a full curriculum and to the life of the school.

The Learning Support Team co-ordinates the whole school response to individual learning needs across ranges of age, ability and curriculum. Discussions with primary schools take place in the term prior to students arriving to identify any barriers and put strategies in place ready for Year 7 in September.



The SEND team are located in Hub Resource Base. For specific students three cycles of intervention will run annually. Students are identified based on a graduated response from data reports and referrals from subject teachers. Interventions will be delivered by LSAs and teachers during lesson/tutor and after school sessions.

The Hub Resource Base is a North Somerset provision delivering part of the student timetable within the Hub and part in the mainstream. This provision is specifically for ASD students and there is an entry criteria, which is managed by the North Somerset SEND team.

Our SENCo is Melody Cole. She can be contacted at the school on 01275 852251, SENDEnquiries@nailseaschool.com.



Student Voice

Students are given many opportunities to make their opinions heard and have an impact on the running of the school ranging from suggestions for allocation of funding, forming a student panel for staff interviews, recommending changes and improvements. Students are encouraged to take on leadership roles throughout the school from Years 7 through to 13.

The predominant vehicle for student voice is the Student Council led by two Head Prefects from the 6th Form. Each House also has two School Captains from year 11 and four Student Council Reps representing the lower years. The Council meet weekly to discuss areas including teaching and learning, charity, wellbeing, communication, equality and diversity, sports, and fundraising.

Student Wellbeing

At our school we recognise the importance of positive wellbeing. Students may face a range of issues and pressures and need to build skills of resilience, a positive outlook and mindfulness. The school supports students as they move through the different transition periods by providing opportunity to build coping mechanisms and allowing them to make mistakes in a safe environment.

Our ABSolute programme at tutor time and during assemblies reinforces the importance of positive wellbeing and how to develop skills which will be useful throughout life.

Our Pastoral Team deliver interventions for those who need more support or encouragement and work with a variety of outside agencies to strengthen this work. We also have a Youth Worker in school and an excellent partnership with Counsellors and the Sirona School Nurse.



Child Protection

Our safeguarding team have responsibility for the safety and wellbeing of every student in school and ensure all staff are trained in safeguarding according to government recommendations. The safeguarding team have advanced qualifications and are easily identifiable by their green lanyard. Any concerns are documented and recorded in order for appropriate action to be taken and support offered. The safeguarding team are in regular contact with families that need more support.

Teaching Groups

Students are taught in mixed ability teaching groups. These groups change for PE, Technology, Drama and Ethics and students are in sets for Maths.

The Transition Team gather attainment information for all students from their primary schools and use their KS2 scores to help when placing students into groups. Baseline tests are also carried out in Term 1 of Year 7 to facilitate adjustments in groups if necessary.

Team Nailsea

The #TeamNailsea ethos is central to everything we do in school. We work towards every member of the school community feeling supported and encouraged to achieve their very best.

Nailsea is a school at the heart of the community.



At Nailsea we have an achievement focused culture where there is no ceiling on what our students can accomplish. We will never compromise on excellence so that all students thrive and achieve their absolute best.

Through high quality teaching, strong pastoral systems and a focus on personal and social development we seek to prepare each unique student for the bright and optimistic future they have ahead of them.

When we **aspire** and **believe** together, our community **succeeds**.

Our core values underpin students' experience at Nailsea School. Our five core values are:

- Ambition – by aiming high, demonstrating drive and determination #AimHigh
- Respect – by valuing the diversity, rights and property of others #BePositive
- Kindness – by demonstrating consideration to others #BeKind
- Pride – by valuing our own and the achievements of others #BeProud
- Community – by welcoming everyone and celebrating the diverse society we live in #TeamNailsea

Study

Curriculum maps showing the topics your child will be studying in each subject, each term, are available on the school website. Parents like to use these to keep up with the content of each subject and support learning within the home.

Travel

We encourage as many of our students as possible to walk for part or the whole of their journey to school. Students that cycle can leave their bikes in the racks provided on site which are locked for the duration of the school day.

There is no parking on school site or access to the school car park for parents to drop off or collect children. Due to the size and layout of the school car park and the coaches and mini busses manoeuvring, students should be dropped off outside the school and use the student/pedestrian access points to walk onto school site. The safety of our students is paramount. If you are meeting your child on foot please wait for them outside of the school perimeter.

School bus services currently cover the Clevedon/Congresbury/Yatton/Cleeve areas. Services have limited spaces so please register your interest with the school Finance Office (via info@nailseaschool.com) and places are then offered on a first come first served basis. Pick up times and routes are confirmed according to demand. Payment is for the whole term (we cannot accommodate part week or part term reservations) and is requested a term in advance once a place is confirmed.

Trips

A variety of trips take place each term across the school year. The majority of these run in line with subjects complimenting course topics and improving understanding of the subject. In the GCSE subjects, course trips provide the optimum opportunity to enhance teaching and learning and enable completion of coursework.

During our enrichment week in the Term 6 students are able to sign up for enrichment packages incorporating off site trips and activities.

During their time in school students will have the exciting chance to experience residential trips abroad including ski trips, foreign language trips, Iceland geography field trip, Battlefields History trip and more.



Uniform

Our uniform was designed by students in the school council at the time, an example of student voice at its best. Students are expected to take pride in their appearance and present themselves smartly each day.

In order to keep costs down, only the school jumper, fleece, shorts and tie are available exclusively from School Togs. Other items of the uniform are also available from this outlet, however they may be purchased from any shop providing they comply with the requirements set out below.

All items of clothing should be marked with student's name, and be clean and neat.

Please see Nailsea School's website for further information on jewellery, makeup and uniform.

If parents have any difficulty with purchasing uniform – please contact Mrs S Rutty srutty@nailseaschool.com

JUMPER	School jumper/sweatshirt with the school badge
SHIRT	White shirt with buttons at the neck (long or short sleeve)
FLEECE	Branded school fleece with school badge worn over jumper (optional)
TIE	Clip on House Tie
TROUSERS	Tailored black trousers. Skin tight fitting style trousers are not allowed. Jeans and leggings are not allowed. Ankles should not be visible.
SHORTS	Tailored school shorts with the school badge (optional)
SHOES	Black leather-look shoes or trainers (no canvas, boots or colour flashes)

Students must also have the following Sports Kit:

Compulsory Items

- PE polo shirt (navy & gold)
- Plain navy sports shorts (not cycling shorts)
- Reversible navy & gold rugby shirt
- Trainers
- Long navy socks - needed when wearing shin pads (white sports socks to be worn otherwise)
- A pair of shin pads (for football and hockey)
- A gum shield (compulsory for hockey and competitive rugby)
- Football boots when playing competitive football/rugby
- No jewellery

Optional Items

- A pair of navy blue sports leggings with printed Nailsea logo
- A plain navy blue jumper (no hoodies)
- Plain navy tracksuit bottoms (winter only)
- Hoodless waterproof navy coat
- Skorts (for games activities only)



Any items (phones, jewellery, bikes, etc) are brought to school at own risk. Staff cannot be responsible for their safekeeping.

School Togs

School Togs stock all uniform and PE kit items and are happy to advise www.schooltogsnailsea.co.uk



Voluntary Contribution to school funds

Throughout the school year a number of fundraising events take place either organised by the House teams, Student Council or the PTA. The funds from these events are normally split between charity donations and school funds. We are grateful to all families that support these events.

Government funding covers the basic provisions for all state schools. In order to offer the extras for students like extra curricular activities, speakers, workshops, specialist resources and more we need to draw from additional funds. If you are in a position to be able to make a separate voluntary contribution to school funds please contact our Business Manager, Mrs Sarah Hurlow, shurlow@nailseaschool.com.

Wessex Learning Trust

The Trust believes in high quality education and personal development for its young people, strongly rooted in communities. It believes in valuing all staff, developing a growth mind-set around distributive leadership and opportunity. Hope, belief and aspiration are central.

Each individual Academy in the Wessex Learning trust is encouraged to maintain its own distinctive ethos, be at the centre of their community and raise aspirations and achievement. This is achieved in two ways: firstly, through excellent teaching to inspire curiosity, unlock talents and realise potential; and secondly, by ensuring high quality care, guidance and support that ensures the personal development and welfare of each child.

By working together, the talents of all staff are harnessed; good practice is shared between all academies together with resources that enable us schools to concentrate on delivering excellence in education.

