

# Nailsea School

# NEWSLETTER

DECEMBER 2022 | Term 2



## Message from the Head

As we look back on 2022, we can do so with a great sense of collective pride. What we are continuing to achieve as a school community is remarkable and on behalf of our excellent Governors and outstanding staff, I would like to thank each of you as a family for your continued support – it really does make all the difference! The students, as you can see from the items within this edition, continue to work hard and embody our key school values. They are a pleasure to work with.

Have a wonderful break when it arrives and for those who celebrate - Happy Christmas and Happy New Year



Mrs Elliott

Headteacher



## Cosy Christmas Tales

Nailsea School Library hosted a 'Cosy Christmas Tales' event for Year 7 students who were invited to attend at lunchtime, to bring a pillow and blanket from home and to get into the Christmas spirit listening to the classic tale "How the Grinch stole Christmas".

Our special guest storyteller was none other than Mrs. Elliott who did an amazing job reading aloud this classic and well-loved Christmas story to students. During their reading lessons the last 2 weeks of term, students have been discussing the Christmas book genre and have learnt about the Icelandic tradition, Jólabókaflóðið meaning "Christmas Book Flood" whereby on Christmas Eve, books are given to each other as presents and people spend the evening reading and eating chocolate!



To spread a little Christmas cheer and tradition each student who attended the event received a small book, a chocolate as well as a Get Caught Reading house point!

Mrs Conner

# ASPIRE | BELIEVE | SUCCEED

Nailsea School Mizzymead Road Nailsea BS48 2HN

01275 852251 | [nailseaschool.com](http://nailseaschool.com) | [info@nailseaschool.com](mailto:info@nailseaschool.com)



## An Introduction from our new Trust Link Trustee, Paul Jenkins

Schools Trusts are charitable companies that oversee and manage a group of schools who have joined together to make up the trust. Like all Schools Trusts, the Wessex Learning Trust exists to enhance collaboration, take advantage of economies of scale, celebrate best practice and drive school improvement. An essential part of the governance structure of a Trust is the Board of Trustees. In many respects, Trustees are similar to School Governors - we are unpaid volunteers drawn from the local community with a diversity of skills and experience, and a desire to "give something back". Some are educationalists, some have particular professional skills in areas such as HR, law and accountancy, and others, like myself, have a general business background. Legally the two roles are quite separate but, in practice, perhaps the main difference is that Trustees have a "holding to account" responsibility for the overall performance of the Trust, whereas School Governors have a similar and equally important role at the individual school level.



It is, of course, very important to establish great working relationships between the Board of Trustees and the School Governors, Headteacher and Senior Leadership Teams in individual schools. This is where the concept of a "Link Trustee" can really add value. Link Trustees do not represent or speak for a school as such but rather they are a direct two-way line of communication between a particular school and the Trust Board, and hopefully help to ensure our joint vision and values are aligned.

I am absolutely delighted to take on the role of Link Trustee for Nailsea School. Although I am now a resident of Axbridge, I lived in the Nailsea / Backwell area for 22 years and know it very well. I retired some 4 years ago after a career which included 19 years in business management with Hewlett-Packard. Since becoming a Trustee 2 ½ years ago, my main focus has been on the strategic management of the Trust's estate (land and buildings) across our 16, (very soon to be 17) schools. More recently, I have been appointed Chair of the Trust's Risk, Strategy and Audit sub-committee.

I really look forward to working with Nailsea School as your Link Trustee.

**Paul Jenkins**

## A Message from the Governors

This term the Governors were pleased to attend the Sixth Form Open Evening in November, when the school welcomed prospective students and their families. The Governors were very proud to see how many of our existing Sixth form students volunteered to showcase the school on the evening, and to see their confidence, enthusiasm and detailed knowledge about their chosen subjects. Many thanks to all staff and students who put so much time into preparing this event.



Governors have been working closely with the school leaders on specific school improvement targets and have undertaken a number of governor visits in key areas.

Lastly, at Christmas, particular thanks to our Nailsea PTA, whose efforts we greatly value, supporting our school and raising our profile within our community. Many thanks to all the parents and carers who get involved, and thank you to everyone in our school community who support their initiatives.

Thank you to all our families for supporting our school. We hope all students, families and staff enjoy a very 'Happy Christmas'.

**Dr Jo Edwards**

# ASPIRE | BELIEVE | SUCCEED

Nailsea School Mizzymead Road Nailsea BS48 2HN

01275 852251 | [nailseaschool.com](http://nailseaschool.com) | [info@nailseaschool.com](mailto:info@nailseaschool.com)



# Nailsea School PTA

Raising money to enhance our children's education

December 2022 | Term 2

The PTA have been busy since the half term break, organising events and contributing funds to wish list items from different school departments.

£500 To provide new books for a yr7 reading project.

£1,000 Towards the cost of updating/replacing old equipment for DofE expeditions.

£500 Rewards Budget



We kicked off the term with Musical Bingo which was a huge success, and everyone had a great time



## Christmas Trees

Well done to our lovely PTA ladies who braved the cold weather to be on duty in the school carpark for people to collect their pre-ordered Nordmann Christmas tree. It's nice to see the trees decorated.

## Wreath Making

The wreath making was a fantastic evening with over 70 people attending. There was an abundance of foliage and accessories to choose from and much fun was had watching all the participants create some truly spectacular wreaths whilst enjoying a glass of prosecco. Christmas music was playing in the background and PTA members were on hand to offer a table service for drinks. A truly fun evening was had by all.



## Thanks

The PTA want to say a BIG thank you to Impact IT Solutions (UK) Ltd who donated 20 nearly new 24" monitors to the PTA for the school to use.

## Easyfundraising

Did you know that whenever you buy anything online, you could be raising a donation for our PTA? There are over 300 retailers on board ready to donate and it does not cost you a penny extra! It is simple, all you need to do is:

1. Join - head to [www.easyfundraising.org.uk/causes/nailseaschoolpta/](http://www.easyfundraising.org.uk/causes/nailseaschoolpta/) and sign up
2. Shop - every time you shop online, go to easyfundraising first, pick your retailer and start shopping.
3. Raise – after you have checked out, that retailer donates to your worthy cause



## School Lottery

We run a weekly school lottery which is a fantastic way to support the school with a cash prize winner every week and a jackpot of £25,000. Signing up is easy and tickets costs just £1 a week, so why not visit [www.yourschoollottery.co.uk](http://www.yourschoollottery.co.uk) and search for Nailsea School - you never know you could be the next lucky winner – Good luck!



## Join Us!

If you want to join our very friendly PTA team, we meet once a term and all new members are very welcome. Our next meeting is at 7pm on Wednesday 18<sup>th</sup> January. Please email [nailseapta@nailseaschool.com](mailto:nailseapta@nailseaschool.com) to let us know you are coming.



## STAY IN TOUCH

Email: [PTA@nailseaschool.com](mailto:PTA@nailseaschool.com)

Facebook: [CLICK HERE](#)

Twitter: [CLICK HERE](#)





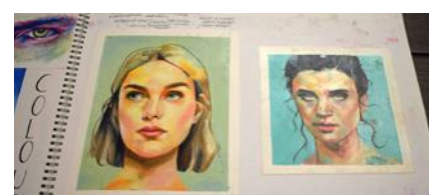


## Expressive Arts Showcase

This November we held the inaugural Expressive Arts Showcase, an event intended to showcase and celebrate the work of Expressive Arts students. In the main Atrium we exhibited work produced by GCSE and A level Fine Art, 3D Art, Media Studies and Photography students, accompanied beautifully by year 10 pianists Oliver V and George P, and guitarist Jilma R. Additionally, films produced by Film Studies students played for the audiences delight in the Auditorium.

All parts of the Expressive Arts faculty proudly displayed and celebrated the work of our students for our visitors to enjoy. There was a real buzz about the quality of work on display, and it was a valuable opportunity for our younger students to consider creative progression routes. Thanks so much to all Expressive Arts students for producing such inspiring and creative outcomes, and we'll be back with an even bigger and better Showcase next year!

Ms R Davies  
Faculty Leader for Expressive Arts



# ASPIRE | BELIEVE | SUCCEED

Nailsea School Mizzymeard Road Nailsea BS48 2HN

01275 852251 | [nailseaschool.com](http://nailseaschool.com) | [info@nailseaschool.com](mailto:info@nailseaschool.com)





## Your Journey | Your Future



### Sixth Form Open Evening

Sixth Form Open Evening was a huge success this year—with a record number of Year 11s attending, keen to find out about what options were available to make their next steps.

A' Levels are still a popular choice—however the Sixth Form is seeing an increase in the number of interest in the more recent additions in the course portfolio, including Criminology and Forensic and Criminal investigation. The popular Health & Social Care and Sport courses were incredibly well received, both of which can be taken alongside other courses as a Certificate, or as an equivalent to three A levels through the Diploma. In the past these types of courses would have been more typical of a college setting.

Mr Truan, Head of Sixth Form said:

*"It was a great event, and students appreciated the wide variety of options on offer, the recently updated facilities and the strong pastoral ethos of the centre. We are proud of our enrichment programme and students enjoy the independence they gain from learning with us."*

# ASPIRE | BELIEVE | SUCCEED

Nailsea School Mizzymead Road Nailsea BS48 2HN

01275 852251 | [nailseaschool.com](http://nailseaschool.com) | [info@nailseaschool.com](mailto:info@nailseaschool.com)





## Treats to Eat!

As part of their Duke of Edinburgh's Award, Chloe E and Emily E in Year 9, wanted to find a way to support staff and give them a boost.

Their idea was on (what they are calling) Wellness Wednesday each week they would bring in baked goodies for staff.



Students are invited to sign up to the Duke of Edinburgh Award scheme in Year 9 and continue on their adventures onwards until Sixth form. Students learn new skills, volunteer and set off an ambitious hike as part of the scheme, pushing them to challenge themselves and learn something new.

Staff were delighted to see these beautiful gifts made by Chloe and Emily in the staff room at break time – thank you!

## Tyntesfield Trip

Year 12 English Literature students (and staff) embarked upon a trip to Tyntesfield House in December to get them in a Christmassy mood. Whilst at the site, students enjoyed reading a range of Christmas literature whilst walking around the house and grounds. The weather was perfect for such an excursion - cold, clear and bright.

Whilst visiting the house and reading the works of literature, students were treated to snippets of history by the amazing guides who were dressed up in traditional clothing from when the house was first built. At various stages of the visit students stopped to appreciate works of literature which have Christmas themes or settings including *The Wind in the Willows*, *Little Women* and *In the Bleak Mid-Winter* by the poet Christina Rossetti who they are currently studying.

It was a great end to term and a brilliant way to celebrate their first two terms as A Level Literature students - made even better by the luxury hot chocolate!

Miss Creswick



# ASPIRE | BELIEVE | SUCCEED

Nailsea School Mizzymeade Road Nailsea BS48 2HN

01275 852251 | [nailseaschool.com](http://nailseaschool.com) | [info@nailseaschool.com](mailto:info@nailseaschool.com)





#TeamNailsea donations



#TeamNailsea donations

## From Nailsea with Love...

A huge thank you to all the families that donated gifts to the Ukrainian Christmas Appeal. We were overwhelmed with the response and the many really thoughtful gifts. The charity "From Bristol with Love for Ukraine" will be coordinating the packing and transporting of donations. The charity were stunned at how much the school had collected.

This charity works with families still in Ukraine that are unable to leave for a variety of reasons. Clothes, presents, sweets and toys will be sent to the children of families caught up in the war zone. Your generous gifts will hopefully bring a smile to the faces of Ukrainian families during these terrible times.



*From Bristol with Love for Ukraine*

## UPDATE

Donations reached Suceava in northern Romania (circa 25 miles from the Ukrainian border) by the 1st December and handed over to Ukrainian representatives there who were ready to receive the delivery, where it was dispatched to be shared throughout the whole of Ukraine. As the pictures show—the citizens were delighted to receive the gifts in these difficult circumstances. #BeKind #BeProud

FFI: [www.frombristolwithlove.org](http://www.frombristolwithlove.org)



#Donations awaiting delivery



Donations arriving

# ASPIRE | BELIEVE | SUCCEED

Nailsea School Mizzymead Road Nailsea BS48 2HN  
01275 852251 | [nailseaschool.com](http://nailseaschool.com) | [info@nailseaschool.com](mailto:info@nailseaschool.com)





*"They shall not grow old, as  
we that are left grow old,  
Age shall not weary them nor  
the years condemn,  
At the going down of the sun  
and in the morning,  
We shall remember them"*

Robert Laurence Binyon



## Remembrance Day Display & Memory Wall

Throughout the month of November, Nailsea School Library have been remembering service personnel who have served in warzones and during World War I and World War II. I have been very privileged to have received numerous scanned photos and stories of your family and loved ones who served in the World Wars.

The students have been visiting the library to view the photos and to tell me about their relatives. Elsie C and Lewis S attended the Trust's commemoration in Cheddar on Friday 11<sup>th</sup> November.

As part of the remembrance, during reading lessons, Years 7, 8 and 9 have been learning and focusing on the war reading genre. I want to thank all of the parents and students who sent in photos for our display.



## Library Thanks

A huge thank you to the following students for doing an amazing job as Student Librarians for Term 1 and 2 from shelving and checking out books to helping with displays and putting books into boxes.

Eleni I, Elle R, Esmae L, Florence H, Freya T, Isabel H, Jacob D, Seren S, Sophie B.

An extra special thank you to the following for their help with cutting the Christmas

decorations on top of their normal duties;

Amelia W, Chethi M, Issy B-S, Maisie M, Risini M and Rowan P. Also Miriam W – who produced the paper Christmas trees and Annie J & Lottie G - who also produced the Christmas tree book art.

# ASPIRE | BELIEVE | SUCCEED

Nailsea School Mizzymead Road Nailsea BS48 2HN

01275 852251 | [nailseaschool.com](http://nailseaschool.com) | [info@nailseaschool.com](mailto:info@nailseaschool.com)





## Photography Competition

Each year, a real highlight for us is seeing the entries for the annual Photography Competition. The theme this year was 'The Beauty of Architecture' and we had over 100 entries from years 7 – 13, each with a unique visual viewpoint on this theme. The judges from the local Rotary Club and Backwell Photography Club were impressed by the entries, and wanted to thank all students who submitted an entry. It was a very difficult decision to pick the winners, such was the quality.

Special congratulations to the winners from KS3 and KS4/5 – Joseph M (year 7) and Lucy M (year 11). Joseph took his wonderful photograph of a tunnel in King's Cross station, and the judges were impressed with his composition and understanding of lighting. Lucy's photograph wowed us all due to its vantage point, highlighting as it did the aesthetic qualities of a spiral staircase. Lucy wrote of her photograph *'This photo shows the beauty of architecture as the spiral of the staircase leading to the design on the floor looks like an ammonite and it also follows the Fibonacci sequence.'*

Congratulations to all the photographers, and good luck to Joseph and Lucy as their photographs progress to the next stage of the competition in the wider South West region.



Joseph M (year 7)



Lucy M (year 11)

Ms R Davies

Faculty Leader for Expressive Arts

## What is a Nailsea School Language Ambassador?

I chose to be a language ambassador as I didn't have the opportunity to take Spanish at A-Levels. I enjoy turning up each week and helping the lower students with the language. I help in a Year 10 class who are doing their GCSEs and a Year 8 class who are learning the language for the first time.

In the Year 10 class, I do speaking practice with the students to help them gain confidence in speaking as well as encouraging them to extend their vocabulary to be able to achieve the highest grade when it comes to their GCSEs. In the Year 8 class, I help the students that need the most help whether it be with spelling something in Spanish or helping them translate without telling them the answer directly. I enjoy helping in languages as I love Modern Foreign Languages and that it is sort of like doing lessons with them.

Charlotte H Year 12 Student

# ASPIRE | BELIEVE | SUCCEED

Nailsea School Mizzymead Road Nailsea BS48 2HN

01275 852251 | [nailseaschool.com](http://nailseaschool.com) | [info@nailseaschool.com](mailto:info@nailseaschool.com)



## Year 7 Netball

The Year 7 Netball team have had a fantastic season. The girls have shown great commitment to training, come sun or rain. The credit in their development is completely down to a Year 12 student Annabel S who has coached and supported them to a high level.

On the 30th November they attended their first district tournament for the school for which two teams were taken. Overall, the teams finished 5th out of 11 and 4th out of 8.

The girls played extremely well taking on board all the coaching that was given them, with some playing out of position, which didn't phase them. A great season Year 7's, well done to all and a massive thank you to Annabel.



## Year 10 & 11 Hockey

The year 10 and 11 Hockey club has been running throughout this term on Thursday afternoons. Attendance at the club has been incredible with over 30 students regularly attending and competing in matches against other schools. Many students who have been coming along have played in their first competitive hockey matches and been a credit to the school with some fantastic results against Backwell, St Kath's and Priory heading in to the end of season tournament unbeaten.

The high turn out and excellent standard made selection for the North Somerset Schools district tournament difficult with only enough space for 15 on the minibus. Those students who were selected performed superbly in difficult freezing and foggy conditions and remained unbeaten in all matches, resulting in them being crowned District champions having not lost a game this season.

A huge well done to all players who participated in the squad this season: Anna A, Daisy B, Milla C, Jacob C, Alba C, Flo D, Rosie D, Hope E, Bea E, Elsie F, Ivan G, Amelia G, Yasmin H, Maisy H, Momo H, April K, Eliza L, Roxy M, Lily M, Maisie M, Erica M, Freya N, Amy P, Poppy R, Alexa TG, Zoe V, Cianna W, Tahera W, Emily W, Milo W and Emma W.



## A Level Psychology Students

On Wednesday 30th November Mrs Hastings and Miss Cartwright took a group of 21 Year 12 and 13 A Level psychology students to a conference in Bristol all about Science and Psychology. In the morning we heard various talks including how to use psychology to solve crimes and a dance expert explaining the links between psychology and performance.

In the afternoon a magician called Oliver Meech showed us magic tricks and how psychology explains them. He even taught us how to do one! There was lots of audience participation which was a lot of fun and the day ended with the hypnotist Andrew Newton explaining and also demonstrating hypnosis!

We all had a great day and felt very inspired by all the application and fun psychology provides!

Mrs Hastings



# ASPIRE | BELIEVE | SUCCEED

Nailsea School Mizzymeade Road Nailsea BS48 2HN

01275 852251 | [nailseaschool.com](http://nailseaschool.com) | [info@nailseaschool.com](mailto:info@nailseaschool.com)





## A-Level Geography Expedition to Iceland Early November 2024

# GEOGRAPHY 2024



This 5 day expedition will be open to all students studying A-Level Geography (currently in Yr 10 and 11). It will compliment the Tectonic Processes and Hazards unit studied in Yr 12 and the The Carbon Cycle and Energy Security unit studied in Yr 13. It will not only be a great experience but will also help prepare you for your a-level exams.

Whilst in Iceland you will visit Geysers, boiling mud, hot springs, The Westmann Islands, the Blue Lagoon (geothermal natural hot spring), the Icelandic version of the Giant's Causeway, a geothermal power station, go glacier hiking, visit resplendent waterfalls and walk along the Mid-Atlantic Ridge!

The total cost for this **all inclusive** 5 day expedition is estimated to be between £1200 and £1350\*. Sign up will commence September 2023 for students who will then be in Yr 11 and 12. There will be an information evening in September for all those interested in going.

\*We will have a clearer idea of a final price once flights are released and final numbers are confirmed.

Mr R Anstey



# ASPIRE | BELIEVE | SUCCEED

Nailsea School Mizzymeade Road Nailsea BS48 2HN  
01275 852251 | [nailseaschool.com](http://nailseaschool.com) | [info@nailseaschool.com](mailto:info@nailseaschool.com)



## Antarctica Flag Competition

The Geography department have been blown away by the entries for the Antarctica flag competition this year. Each year the Polar Network Organisation launch a competition with schools to design a flag for Antarctica. Winning entries from each school are then taken to Antarctica and photographed by the scientific team working there.

The Geography team were so impressed with the standard of entries this year and found it really hard to decide upon a winner. The creativity and drawing/IT skills were fantastic

We decided Sam G from D4 was the overall winner with his penguin made of flags! Our two runners up were Izzy M and Rowan P.

Congratulations, we can't wait to see Sam's flag in Antarctica!

## Year 11 Bristol Fieldtrip

On the 22<sup>nd</sup> and 25<sup>th</sup> of November Year 11 geography students completed the second of their fieldtrips to Bristol Harbourside and Cabot Circus. Students were investigating the regeneration of the harbour side and took part in a boat trip through the docks to evaluate the regeneration strategies used.

Students carried out a range of human field work techniques at Wapping Wharf, Redcliff Wharf and Cabot Circus, comparing the different regeneration of each area. After a week of biblical rainfall we were so lucky to have picked the two dry days of the week.

Students collected some excellent fieldwork and are now presenting, analysing and evaluating results back in class.

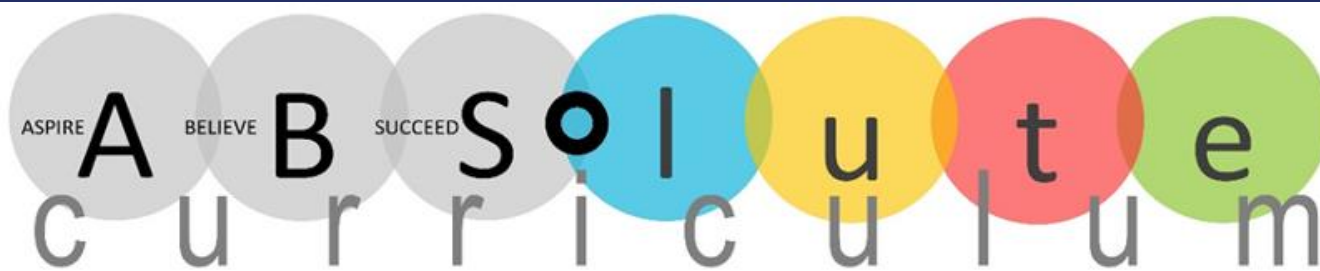


# ASPIRE | BELIEVE | SUCCEED

Nailsea School Mizzymead Road Nailsea BS48 2HN

01275 852251 | [nailseaschool.com](http://nailseaschool.com) | [info@nailseaschool.com](mailto:info@nailseaschool.com)





Visit the ABSolute Curriculum page on our website for further information: [ABSolute Curriculum – Nailsea School](#)

### Guests

Year 8 experienced **Smashed Live**, an inspiring live theatre experience with an interactive workshop. The aim was for students to observe, explore and reflect on vital underage drinking themes including: The social and emotional causes; The impact on young lives; Social influence and decision making; Where and how to help yourself and others.



### Student Led Tutor Group Assemblies

This term, we have been inspired by tutor group assemblies which were led by the students on the themes of Aspire and Believe. Below are some of the highlights.



#### Unicorn 1 Assembly: Aspire

Our Assembly was on the topic of Aspire and we chose to do it about Aspiring to make Nailsea School more eco friendly and helping the world have less plastic. We suggested instead of using single use plastic bottles we could reuse bottles and sell metal bottles. We also spoke about the bottle return scheme in Germany which we found very interesting. **Written by Chloe in U1.**

In their assembly U1 took the theme of "We aspire to be a more environmentally friendly school". Lots of really good ideas were looked at as to how plastic waste and other waste could be cut down, or recycling levels improved. This is such an important global issue it's good to see our students taking it so seriously. Well done all in U1 for contributing to the assembly.

**Mr. Reddiford**

#### Unicorn 2 Assembly: Believe

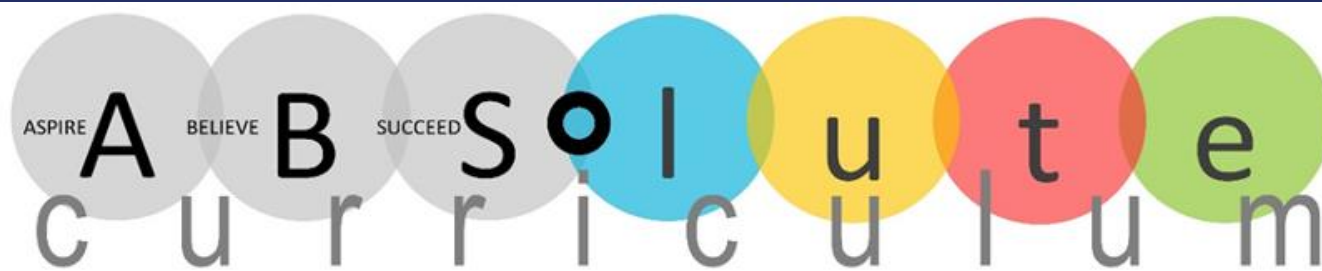
U2's assembly this week is focusing on the theme of 'Believe'. We came up with the title of 'Believe in You' which talks about growth mindset and how it is important to believe in yourself even if things are hard. A growth mindset is instead of saying "I can't do this", saying "I will try" or "I can't do this yet". Having a growth mindset is good because it makes you try harder in school and not give up just because you think it is hard. You can also have a growth mindset in out of school clubs. We came up with some tips to help people with their growth mindset like, take a break for a few minutes when you can, minimise digital distractions, ask for help and try changing the phrase "I can't" with "I can't yet". **Written by Kelsie and Daisy in U2.**



# ASPIRE | BELIEVE | SUCCEED

Nailsea School Mizzymeard Road Nailsea BS48 2HN

01275 852251 | [nailseaschool.com](http://nailseaschool.com) | [info@nailseaschool.com](mailto:info@nailseaschool.com)



## Dragon 3 Assembly: Believe

In our Believe assembly, we decided to gather our favourite 'believe' quotes to read out through a power point slideshow. Each student selected one quote to read out and other students gathered information on believe inspirations. Some of these examples being Rosa Parks and Martin Luther King.

As a tutor group we practiced our lines together and worked as a team to pull our assembly together.

We rehearsed our lines and prepared our PowerPoint. We also selected a video we thought would be inspirational on believe, that we thought would portray an inspirational and thoughtful message to students.

As an introduction to our assembly, we decided to play a song called "We Believe" that we can win by the artist Pitbull. We chose this song because we thought it would be an intriguing song that would grab the attention of students during the intro and outro of the assembly.

We think that our Believe assembly promotes a positive image and shows a positive attitude to learning as well as everyday life. We think that our assembly may create a positive growth mindset within school and may help many students start to believe in themselves more. **Written by Emily G in U3.**



## Phoenix 4 Assembly: Believe

Our assembly was a whole tutor affair! Each member of the tutor group had a line or slide to read aloud, ranging from the weird to the wonderful! We asked our fellow Phoenix House if they believed in a multitude of topics, from if they believed in aliens to ghosts, and if Pepsi is better than Coca-Cola! We even had a slide advertising that 'Ant and Dec' would be in the library at lunchtime for autographs, (at the end we had to say that this wasn't true)!

Beth and Trinity emailed various staff to ask what they believed in, including what our Chair of Governors, Jo Hopkinson believed in and Mrs. Elliott! The music at the start of the assembly was chosen by the Y8 boys, 'Believers' by Imagine Dragons. We also read a range of inspirational quotes and had reflective images promoting self-belief. The video we showed was Morgan Freeman talking about miracles and his near-death experience and that of a man who fell 100 stories and survived.

Due to the mock exams, we did not have much time to rehearse, but I was so proud of all P4 for taking part. I was doubly impressed by those in my tutor group who took extra lines – you know who you are! I believe P4 are the best tutor group. I know I am right!!

Happy Christmas to one and all!

**Mrs. Lange**

# ASPIRE | BELIEVE | SUCCEED

Nailsea School Mizzymeade Road Nailsea BS48 2HN

01275 852251 | [nailseaschool.com](http://nailseaschool.com) | [info@nailseaschool.com](mailto:info@nailseaschool.com)





## NAILSEA SCHOOL STARS

Celebrating those that have aimed a little bit higher, believed in going the extra mile and succeeded in reaching their goals. If there's someone you think deserves "Nailsea School Stars" recognition, then please do drop us an email with details to [fdavies@nailseaschool.com](mailto:fdavies@nailseaschool.com)

### Year 7

- ★ In Business / IT faculty, Miss Evans is really impressed with Faye H for always working her hardest, challenging herself and doing her very best in Business Studies.
- ★ In English / Drama faculty, Mrs. Lange is really impressed with Jacob D for his terrific speech he wrote in English.
- ★ In Expressive Arts faculty, Ms. Davies is awarding 'star status' to Joseph M for taking the winning photograph in the Photography Competition.
- ★ In Health faculty, Miss Wild is really impressed with The Year 7 Netball and Sports Hall Athletics teams for excellent team work at the district tournaments this term.
- ★ In Humanities faculty, Ms Thompson is awarding 'star status' to Harry C for excellence in his write up of Geography fieldwork.
- ★ In Maths faculty, Mrs Coates is really impressed with Anya V for doing so well in her end of unit maths test.
- ★ In MFL faculty, Mrs O'Reilly wants to nominate Bella H for consistently being determined to progress in Spanish, in particular, with her amazing flashcards, well done!

### Year 8

- ★ In Business / IT faculty, Miss Evans gives a big shout out to Emily H for her consistent thoughtfulness, kindness and respect in lessons.
- ★ In English / Drama faculty, Mrs Rutty gives a big shout out to Marvin for his 'marvellous' contributions and ideas in class.
- ★ In Expressive Arts faculty, Miss Hancock-Martin commends Jack P and Logan C for their excellent teamwork when building biscuit and polo towers!
- ★ In Health faculty, Miss Wild gives a big shout out to The Year 8 Netball and Sports Hall Athletics teams for superb team work and commitment.
- ★ In Humanities faculty, Mr Anstey was so impressed with Daisy R for a superb practical piece of Geography homework about a river's journey from source to mouth.
- ★ In Maths faculty, Mrs Rogers is awarding 'star status' to Evert C for always pushing himself to do the challenging questions in his maths lessons.
- ★ In MFL faculty, Mr Paillier is really impressed with Ryan C for consistently being polite, helpful and showing determination to progress in French - well done.

# ASPIRE | BELIEVE | SUCCEED

Nailsea School Mizzymeade Road Nailsea BS48 2HN

01275 852251 | [nailseaschool.com](http://nailseaschool.com) | [info@nailseaschool.com](mailto:info@nailseaschool.com)



## NAILSEA SCHOOL STARS - CONTINUED

Celebrating those that have aimed a little bit higher, believed in going the extra mile and succeeded in reaching their goals. If there's someone you think deserves "Nailsea School Stars" recognition, then please do drop us an email with details to [fdavies@nailseaschool.com](mailto:fdavies@nailseaschool.com)

### Year 9

- ★ In English / Drama faculty, Miss Hitchings is nominating Ocean K for being thoughtful and helping out at the start of lessons.
- ★ In Expressive Arts faculty, Miss Hancock-Martin and Ms Chamberlain are awarding 'star status' to Jessica-May for her fantastic preparation sketches for assessments and homeworks.
- ★ In Health faculty, Mrs Gardiner gives a big shout out to The Year 9 Netball team for excellent perservance and being good role models for the school.
- ★ In Humanities faculty, Mrs Booker says you are a star Sophie S for commitment to consistently producing work of the highest standards and with superb detail and thoughtfulness.
- ★ In Maths faculty, Mrs Mason is nominating Kara C for always rising to the challenge in maths lessons.
- ★ In MFL faculty, Mrs Dunn is awarding 'star status' to Olivia McC for taking the time to make sure that her exercise book is an excellent reference tool by being beautifully presented.

### Year 10

- ★ In English / Drama faculty, Ms Jacobs is nominating Jess E for being so incredibly inclusive when working with others.
- ★ In Expressive Arts faculty, Miss Britton is really impressed with David L for his commitment to the Aim Higher tasks.
- ★ In Humanities faculty, Ms Thompson says you are a star Jacob W for always helping in the classroom, being friendly and polite and having lovely manners.
- ★ In Maths faculty, Miss Miller gives a big shout out to Eduard G for adapting to new ways of working in maths.
- ★ In MFL faculty, Miss Cahill gives a big shout out to Elsie F for giving up her lunch time to work with a Y12 student to boost her grammar knowledge in French showing real commitment and drive for her language learning. A fab dual linguist - merci!
- ★ In Science faculty, Miss Smith is really impressed with Rosie D for an excellent work ethic in Biology.

# ASPIRE | BELIEVE | SUCCEED

Nailsea School Mizzymead Road Nailsea BS48 2HN

01275 852251 | [nailseaschool.com](http://nailseaschool.com) | [info@nailseaschool.com](mailto:info@nailseaschool.com)





## NAILSEA SCHOOL STARS - CONTINUED

Celebrating those that have aimed a little bit higher, believed in going the extra mile and succeeded in reaching their goals. If there's someone you think deserves "Nailsea School Stars" recognition, then please do drop us an email with details to [fdavies@nailseaschool.com](mailto:fdavies@nailseaschool.com)

### Year 11

- ★ In English / Drama faculty, Miss Hitchings is giving star-status to Poppy R for always looking for ways to develop and extend her work
- ★ In Expressive Arts faculty, Miss Britton is awarding 'star status' to Scarlett L for excellent revision effort.
- ★ In Health faculty, Mrs Wells was so impressed with The Year 10 and 11 Hockey squad for having over 30 players attending weekly training sessions and winning the Dirstict tournament. Epic progress.
- ★ In Humanities faculty, Mr Anstey is really impressed with Maddi C for a really committed approach to her trial exams in Geography.
- ★ In Maths faculty, Mrs Sutherland gives a big shout out to Maddi D for a great work ethic in maths.
- ★ In MFL faculty, Miss Cahill commends Madison S for excellent work with Ms Cattani in the run up to your mock exams showing community spirit!
- ★ In Science faculty, Ms Evry is awarding 'star status' to Erica H for being incredibly resilient and working hard to ensure success in the mock exams.
- ★ In Science faculty, Miss Smith is awarding 'star status' to Angus C for putting in lots of extra effort and hard work into Biology

### Sixth Form

- ★ Miss Cahill is nominating Lily H for giving up her lunch to teach a Y10 student grammar - merci!
- ★ Miss Cahill commends Charlotte H as a post 16 Languages Ambassador - supporting Spanish younger years in speaking Spanish - gracias.
- ★ Miss Cahill says you are a star Eddie R for doing an assembly on EPQ with Miss Cahill and sharing his journey! Thanks.
- ★ Mrs Macleod is really impressed with Keara H for outstanding secondary research into current Health and Social Care issues and developing insightful and analytical research essays. Well done!
- ★ Miss Cahill is giving star-status to Jack H as a post 16 Languages Ambassador working with Y11 students ahead of their mocks - un grand merci.

# ASPIRE | BELIEVE | SUCCEED

Nailsea School Mizzymead Road Nailsea BS48 2HN

01275 852251 | [nailseaschool.com](http://nailseaschool.com) | [info@nailseaschool.com](mailto:info@nailseaschool.com)