

Nailsea School

NEWSLETTER

OCTOBER 2022 | Term 1



Message from the Head

Congratulations to all of our students on a brilliant start to the school year. We have enjoyed welcoming a record number of new Year 7 students to the school and more students returning and joining our growing 6th Form.

Students from across #TeamNailsea were magnificent in their support of last month's Open Evening where the number of visitors exceeded our expectations—with nearly a 1000 people attending. Our student volunteers were great advocates for the school and the guests really appreciated their insight into life at Nailsea. As a school we continue to grow in number, vision, strength and aspiration.

As well as the students settling in, we have had a number of new members of staff join the team and they are already making positive contributions to their respective areas.

As you can see within these pages a key focus this year is to return to the huge numbers of opportunities for students to learn beyond the classroom environment and participating in those wider activities. We really encourage all students to be involved in our extra-curricular activities, there is something for everyone, and clubs, groups and activities are a great way to expand social circles and skills.

Mrs Elliott

Headteacher



A Message from the Governors

As the first term of our new school year comes to a close, the Governors are delighted to see the school buzzing and busy with learning: extracurricular activities, trips, lectures and initiatives are back to enliven, inspire and support our students. We welcome all our new Year 7 families and hope students are settling in well to their new setting, ready to get the most out of the many opportunities on offer at Nailsea School.

It was wonderful to see the success of our Open Evening, welcoming prospective students and their families, and to see the fantastic reactions to our school from comments on the night and on social media. The Governors were very proud to see how many students volunteered to showcase the school on the evening.

We have been continuing to meet for our Governor meetings, working within the governance structure of the Wessex Learning Trust. Our new Governors have been busy with their training and getting to know our priorities of school improvement.

Thank you to all our families for supporting our school, and for everyone on our PTA, working to help fund extra resources for our students. We hope all students will enjoy an opportunity to rest and recharge over half term.

Dr J Edwards



ASPIRE | BELIEVE | SUCCEED

Nailsea School Mizzymead Road Nailsea BS48 2HN

01275 852251 | nailseaschool.com | info@nailseaschool.com



A Word from the Wessex Learning Trust

It has been a very busy time welcoming learners back to school after the summer break, we hope you had an enjoyable holiday and that your children were as enthusiastic to return to school as we were!

Staff across the Trust were buzzing with excitement as we began the new academic year with an INSET day focussed on addressing educational disadvantage, with an inspirational talk from Marc Rowland. Marc talked about how to foster a sense of belonging for and empowering all learners, regardless of background and we are delighted that Marc will continue to support and inspire us as he works with the Trust to further enhance our disadvantaged strategy over the coming year.

Just a week into term and we were all shocked by the news of the death of Queen Elizabeth II. We hold close the legacy we have gained from our late Queen, that of hope, belief and aspiration, and we took great joy in celebrating her life as we came together within our schools and our communities during this time.

For now though I hope you have a restful half term break and we look forward to starting Term 2 with what I'm sure will include many Christmas activities. Our young people enjoy these so much as part of their school experience!

Mr Gavin Ball
Chief Executive



Photography Club

This term photography club embarked on the challenge of capturing architecture. This could be widely interpreted as any form or structure in everyday life. Our students have produced an amazing array of imagery from both urban and natural environments. We now move on to our next competition based on Autumn.



- 1 - Thomas C - Year 10
- 2 - Phoebe T - Year 8
- 3 - Sophie B - Year 8
- 4 - Phoebe S - Year 8

ASPIRE | BELIEVE | SUCCEED

Nailsea School Mizzymeade Road Nailsea BS48 2HN
01275 852251 | nailseaschool.com | info@nailseaschool.com



Nailsea School PTA

Raising money to enhance our children's education

OCTOBER 2022 | Term 1

Fundraising

The PTA have been busy since our return to school, organising events and contributing funds to wish list items from different school departments. This term we have contributed funds to the following:

- ★ Library to support a "get caught" project to encourage reading via house points/prizes
- ★ English Dept to purchase a more modern/challenging text for current and future Yr7's
- ★ SLT to fund an annual educational membership for the Tyntesfield Estate which will benefit all years
- ★ 6th Form common room to make it a more welcoming and utilised space

Coming Soon

- ★ 31.10.22 - Christmas card Sale
- ★ 04.11.22 - Musical Bingo
- ★ 09.11.22—PTA AGM
- ★ 03.12.22 - Christmas Tree Sale
- ★ 06.12.22—Christmas Wreath Making

Easyfundraising

Did you know that whenever you buy anything online, you could be raising a donation for our PTA? There are over 300 retailers on board ready to donate and it does not cost you a penny extra! It is simple, all you need to do is:

Join - head to www.easyfundraising.org.uk/causes/nailseaschoolpta/ and sign up

Shop - every time you shop online, go to easyfundraising first, pick the retailer you want and start shopping.

Raise - after you have checked out, that retailer will donate to your worthy cause, and it does not cost you anything extra



All Invited! PTA AGM
 9th Nov at Nailsea School, join us for coffee, tea, & cakes!
 To book please email:
nailseapta@nailseaschool.com



School Lottery

We run a weekly school lottery which is a fantastic way to support the school with a cash prize winner every week and a jackpot of £25,000. Signing up is easy and tickets costs just **£1** a week, so why not visit www.yourschoollottery.co.uk and search for Nailsea School - you never know you could be the next lucky winner— Good luck!

Christmas Cards – by the time you are reading this newsletter, the five winners of our design a Christmas card competition will have been selected and the cards will be being printed and packed. The cards will be on sale from the beginning of November and are priced at £2.50 per pack, minimum order 2 packs and can be purchased via Parent Pay or emailing nailseapta@nailseaschool.com These cards have been designed by our very talented students and printed free of charge so every penny raised goes directly back to the school.

Its **Musical Bingo** time, if you have never been before you do not want to miss it, it is a great night to spend with friends and family having fun. Tickets are just **£6** and can be purchased via Parent Pay or emailing nailseapta@nailseaschool.com. There will be a raffle, bar, soft drinks, and snacks. So, what are you waiting for – get your tickets now, this has always been an immensely popular event and will get booked up fast

Christmas Tree Sale

As in previous years the PTA will once again be selling non drop Nordic Christmas trees, pre ordered and paid for and collected from Nailsea School carpark on **Sat 3rd Dec**, where there will also be the opportunity to purchase Christmas cards designed by our talented students. Information will be coming out soon on how to order your tree.

Christmas Wreath Making

What better way than to spend an evening making your very own beautiful Christmas wreath, join us on **Tues 6th Dec at 7pm** at Nailsea School where using traditional methods, you will design and assemble an elegant wreath or table decoration using fresh green and under the guidance of experienced wreath makers **£20** for all materials and a glass of Prosecco. Bar available for alcohol and non-alcoholic purchases throughout the evening. Why not book a table with your friends and get your festivities?

WE NEED YOU!

DO YOU HAVE A HIDDEN TALENT? CAN YOU ORGANISE EVENTS? CAN YOU FUNDRAISE?

There are a number of ways of getting involved, from offering to help with an event to attending meetings to share your ideas, or simply getting involved in events we run as a participant. We appreciate for many people you may not be able to commit time or energy, so if you simply wanted to attend one of our events, purchase our own designed cards or donate raffle prizes for events are always incredibly grateful.



STAY IN TOUCH

Email: PTA@nailseaschool.com | Facebook: [CLICK HERE](#) | Twitter: [CLICK](#)



University Fair at Ashton Gate

Earlier in Term 1 - Year 12 Sixth Formers travelled down to Ashton Gate to get a taste for the future, seeing different opportunities and options for post-18 study.

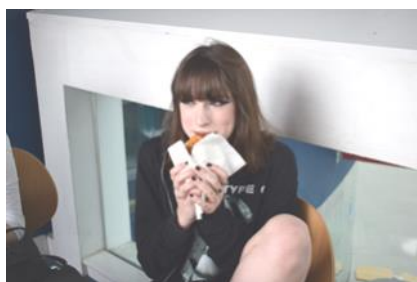
With university stands from all over the country specialising in a range of different career paths, it was the perfect day for research and the start of a new journey. Not only was there an array of stands and freebies but also special seminars offering specific information and opening our eyes to different degree apprenticeships, university life and understanding different loans and debts tied with university.

The day out also allowed us to meet with other schools and get to know other people in a similar position. The finance seminar was especially useful as it covered unknown areas and answered important questions about our future. With that day under our belt, we've all come away with a handful of tote bags, a bunch of answered questions and a range of great research tools for us to investigate and help make our decisions for the future.



Macmillan Fundraiser

The Sixth Form Social group participated in the Macmillan World's Biggest Coffee Morning. We brought in an array of shop-bought and home-made treats to sell - from chocolate madeleines to cookies to lemon sponge, we were spoilt for choice. Macmillan Coffee Morning raises money to help support people through cancer and we wanted to do something to help. We demonstrated our ingenuity by offering contact less payment via bank transfers and practised our persuasive skills! Overall, we made over £50 for the charity. Keep an eye out for our next event!



Talent Tout's

Year 12 and Year 7 enjoyed a welcoming breakfast on their first day of arriving at Nailsea School. The fantastic spread of pastries and fresh fruit were donated by local company Tout's.



Students gathered at the start of the day in a welcome 'social' to help settle any nerves they may have been experiencing.

Huge thanks to Tout's for supplying the lovely snacks—we were overwhelmed by your generosity.



ASPIRE | BELIEVE | SUCCEED

Nailsea School Mizzymeade Road Nailsea BS48 2HN
01275 852251 | nailseaschool.com | info@nailseaschool.com



Success in Design - Shape My City Programme

Miss Alright

Thomas M has recently graduated from the Shape My City Programme. I was privileged and proud to be invited to his awards ceremony at Design West in Bristol. Thomas enrolled on the programme over a year ago with others from in and around the Bristol area. He received an award for completing the programme and a further award with a special mention for attending every session during that time.

Shape My City is an award-winning talent accelerator programme for 15-18 year olds that seeks to change the future workforce across the built environment. The programme is run by the Design West charity. Thomas studied Engineering Design and aspires to become an Architect in the future. Design West is a registered charity, a centre of excellence for design and place-making. Their mission is to inspire the public, politicians and professionals across the built environment to design, better, healthier, places to live, work and relax.

‘Diversity in design means a diversity of experience, perspective and creativity.’

Speaking to Thomas, it was clear this programme has strengthened his desire to become an architect, he’s gained skills and knowledge from partner sponsors, met a new group of friends and thoroughly embraced the experience.

The programme gives talented young people opportunities they might not otherwise have. Female students, those from BAME backgrounds and under-represented groups are encouraged to take part. Students get the chance to work on live builds with partner sponsors, gain skills for the future in design, and help them get into university.

The programme include seminars and workshops, the students experience a number of activities including:

- Work alongside design professionals, engineers and architects
- Develop teamwork, confidence and communication skills
- Learn about a variety of career options in the design sector and pathways to success
- Be assigned to a mentor from a leading company to help with university applications and work experience
- Connect with other creative young people from across the city and begin to create life-long networks
- Go on site visits to inspire buildings

What Happens Next?

During the evening, former graduates shared their success stories and, ‘what happens next? With a focus on quality of life, health and well-being in homes, the graduates have been involved in city planning workshops and community groups such as the asylum seekers shelter project in East Bristol. Graduates go on to study Architecture, Science and Political Science at University, they also secure employment in Architecture companies in Europe and the UK.

Students who are interested in Design, could consider a career as an Architect, Urban Designer, Engineer, Artist Working in the Public Realm, Landscape Architect, Heritage Consultant, Construction Project Manager or a City Planner.

Shape My City is free to take part. Design West will contribute towards travel and provide an evening meal for the cohort. This is a fantastic opportunity for Nailsea School students to get involved with.



ASPIRE | BELIEVE | SUCCEED

Nailsea School Mizzymead Road Nailsea BS48 2HN

01275 852251 | nailseaschool.com | info@nailseaschool.com



Eco- Schools Green Flag Award



Nailsea School has been awarded the status of an eco school!

On the last day of summer term, we received notification that we had been successful in our application to become an eco school.

The awarding body was really impressed with the work of the students throughout the year. Students worked really hard on educating the school about the issues of litter and set up a litter picking rota where students were encouraged to pick up their own waste! Paper recycling boxes have been put in every class, and extra waste and recycling bins part funded by the PTA have been up around the school with clear signs about what can be recycled.

Feedback from the Eco-Schools Team

It's wonderful that you have appointed such a large and representative Eco-Committee, this shows your school's excellent commitment to both the programme and the eco-cause. We love your fair approach to appointing Eco-Committee members. It's great to see that you had such a group of eager, enthusiastic volunteers We love that you kept minutes from your meetings and that they helped to track, guide and prompt your activity. It was great to see that young people were responsible for completing those meeting minutes – this helps them develop new skills! This is a mature and professional approach. Great work!

It was wonderful to see how completing your Environmental Review helped to raise the level of awareness in your school and helped your Eco-Committee to identify the issues and spot gaps in your school's existing environmental activity. But equally important is that it helped you to recognise the great work that you were already doing. This helps to keep up the good activity whilst making you feel empowered to do different things. We love this!

We love the range of activities that you and your Eco-Committee planned for delivery. The fact that they cover both indoor (recycling boxes in every classroom and an anti-litter poster campaign) and outdoor (regular litter picks and planting trees from the Woodland Trust) activities is excellent. It was also great to see accountability and monitoring and evaluation clearly marked in your Action Plan. Great work!

You've clearly embedded the ethos of the Eco-Schools programme far and wide in your school! We're really impressed at how you've linked environmental issues to a variety of curriculum areas. We loved reading about how you had incorporated learning about global issues not only into the Geography and Science Curriculum (most common ones) in your school, but also into other areas such as PSHE. Great work! A challenge for next year might be expanding this to incorporate these issues into other areas of learning like English, Maths, Art or D&T!

We love that your pupils have taken their great work beyond the school gates and into their local community with your excellent tree and hedgerow planting-ceremony day. We are also certain that your pupils will have greatly benefitted from your involvement with such outside organisations as The Woodland Trust, who kindly donated your trees, and the local Council, who helped with your recycling effort.

I hope you and your Eco-Committee take great pride in your achievements, when listed it's almost astonishing how many there are – however, the improvements to your school environment with the litter reducing and recycling measures and, most of all, your superb tree and hedgerow planting day (we loved that) nicely stand out!

Everyone involved should be incredibly proud of the changes they have made. Your Eco-Code is really smart and concise. It's a great message and its punchy nature will definitely help it be processed by everyone passing by your Eco-Board. Congratulations to everyone for the great work you have managed to do, earning your Green Flag with style. You should all be very proud of your work and the application you have submitted!



ASPIRE | BELIEVE | SUCCEED

Nailsea School Mizzymead Road Nailsea BS48 2HN

01275 852251 | nailseaschool.com | info@nailseaschool.com



Art Student Returns

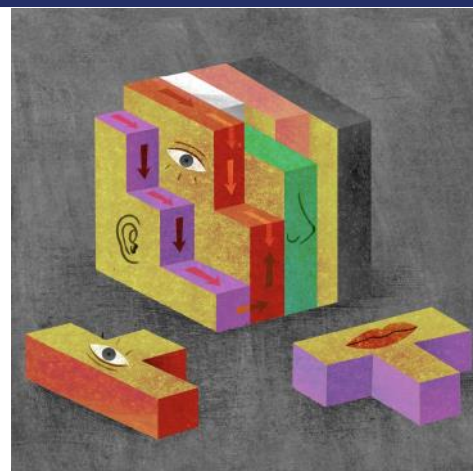
From my perspective there's no better email to receive that one from a former student which begins something like "Hi Miss, can I come back into school to visit you and Ms Hancock-Martin?". This term we were delighted to welcome back former A Level Art & Photography student, and recent graduate, Ashni. She has recently concluded her Illustration degree from Falmouth University, receiving a well-earned 1st Class Honours, and the accolade of being named one of the Association of Illustrators 'Illustration Graduates to Watch 2022' <https://theaoi.com/2022/07/27/10-uk-illustration-graduates-to-watch-2022/>

During Ashni's visit, as well as wowing her old Art teachers, she gave a presentation to a group of sixth formers interested in creativity, and brought along with her a big stack of sketchbooks to share her educational journey post Sixth Form. Ashni's illustrations explore themes relating to psychology, wellbeing, philosophy, science, culture and so much more! She uses a combination of traditional textures and digital mediums, and her work is so refined and engaging. I highly recommend that you check out her portfolio, which can be found here: <https://www.ashniwilson.com/> and on Instagram: @ashni.wilson

I'm sure you'll join me in wishing Ashni all the best as she starts her career as a freelance illustrator.

Ms Davies

Faculty Leader for Expressive Arts



Year 9 Science – Look at our Cells!

Some exciting things to look at down the microscope this week as Year 9 carried out one of their required practical tasks for Biology.

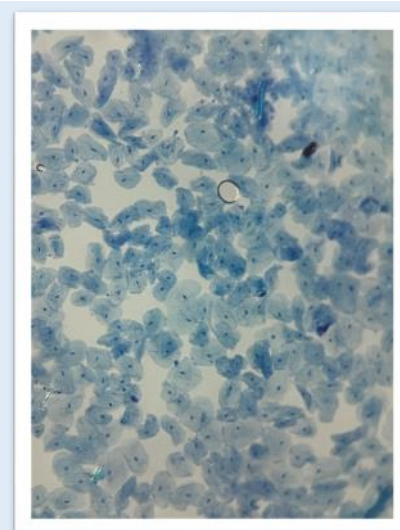
This week they have made and prepared microscope slides from onion and their own cheeks, to draw and identify the parts of the cells they have been learning about in Biology.

Some of the groups prepared fantastic slides showing great skills and were able to capture these stunning shots with the help of their phones. In it you can clearly see the nucleus, cytoplasm and cell membrane.

Incredible work Year 9! This photo was taken by Peter F of Onur I's cheek cells. Florence N and Ellie R also made a stunning slide.

Mrs Evry

Faculty Leader for Science



ASPIRE | BELIEVE | SUCCEED

Nailsea School Mizzymead Road Nailsea BS48 2HN

01275 852251 | nailseaschool.com | info@nailseaschool.com



Year 12 Trip to Durdle Door & Lulworth Cove

Year 12s went on their first Geography A level trip of the year to Lulworth Cove and Durdle Door during the last week of term to study coastal processes.

We were very lucky to have a glorious, sunny day and students carried out various fieldwork techniques to study the geomorphological processes present.

This will be excellent practice for their residential trip in January when they carry out fieldwork for their NEA. The students were excellent, and a massive thank you to Mrs Jones for organising and running the trip.

Mrs Thompson
Head of Geography



Trick or Treat Party

Lots of exciting activities took place in the library this term including a treasure trail which ran throughout the school, a creepy word search and a target game of 'Graveyard Smash' as well as crafting activities—making bookmarks and ghostly decorations.

Students were encouraged to 'get caught up in a book' with spooky book covers and reading suggestions, whilst the library was decorated to look super ghoulish!

Over 166 students took part in the trail and it is thought over 200 students took part in the overall event.

Mrs Conner is currently planning the next library event which will commemorate 'Remembrance'.



ASPIRE | BELIEVE | SUCCEED

Nailsea School Mizzymead Road Nailsea BS48 2HN

01275 852251 | nailseaschool.com | info@nailseaschool.com



Lost in translation...

Idiom: An idiom is a phrase or expression that typically presents a figurative, non-literal meaning attached to the phrase, e.g.: "I'm feeling under the weather."

Write 1-6 in your book. Choose and note down the correct meaning for each idiom from the blue box:

French idiom:	Literal translation:
1. <i>Ça me casse les pieds !</i>	This breaks my feet.
2. <i>J'ai le cafard !</i>	I have the cockroach.
3. <i>Quand les poules auront des dents.</i>	When the chicken will have teeth.
Spanish idiom:	Literal translation:
4. <i>Es pan comido.</i>	It is bread eaten.
5. <i>No tiene pelos en la lengua.</i>	They don't have hairs on their tongue.
6. <i>Echar agua al mar.</i>	To throw water in the sea.

- This is unlikely to happen.
- It is pointless.
- I am in a bad mood.
- It's easy.
- They say it how it is.
- This is annoying.

Challenge: Now can you think of an English idiom for each of the above phrases?

Language Families...



True or false? Look at the map for clues...

1. English is considered a Germanic language.
2. French, Spanish and Italian are all mainly influenced by Latin.
3. Russian is a Slavic language.
4. Welsh and Irish are Germanic languages like English.
5. Greek uses the same alphabet as English.
6. Icelandic is a Slavic language.
7. Portuguese and Spanish are the same language.
8. It is possible for a language to have a mix of influences.

Challenge: Re-write and correct any false statements.

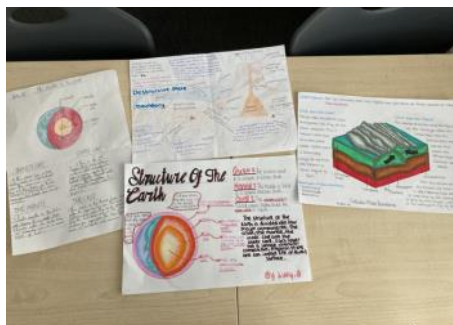
European Day of Languages

The European Day of Languages promotes language learning and raising awareness of the linguistic diversity and cultural heritage of Europe.

On Monday 26th September Nailsea School students marked European Day of Languages by completing short activities designed to get students thinking about the benefits of language learning and learning about other cultures.

Students learnt about greetings in fourteen different languages; European 'language families' and the make-up of English; idioms that get lost in translation; and how English has changed over time, to name a few!

Mr Paillier



Year 9 Risky World

Year 9s have been learning about the structure of the world and different plate boundaries, exploring the causes of earthquakes and volcanoes. They were set a challenge homework to create a model, poster, diagram of either a plate boundary or the structure of the earth. We were blown away by their homework. We had Minecraft plate boundaries, destructive plate boundary cakes, Lego model structures of the world as well as plasticine and play dough models and videos- fantastic!

ASPIRE | BELIEVE | SUCCEED

Nailsea School Mizzymead Road Nailsea BS48 2HN
01275 852251 | nailseaschool.com | info@nailseaschool.com



Bouncing for England

Good luck to Year 9 Lucy P who will be heading to Portugal over the half-term holiday to represent England in the Loule World Cup Trampoline/Double Mini Trampoline/Tumbling competition. Lucy trains regularly at Alchemy Trampoline & DMT club, putting in hours of training a week at the Nailsea School based club.

This is Lucy's first international competition since being selected for the national team in April. She will join the 14 strong England DMT Team and is the youngest competitor in this discipline.

This is the 15th Loule Cup which attracts competitors from around the globe. This year that will include teams from Argentina and Hong Kong along with teams from throughout Europe.

Good luck Lucy!



Golf Captain's Success

Year 8 student Frances S was Captain of the Gloucestershire Girls Golf team for the first time this term when led them to victory against teams from Wiltshire and Somerset.

Together they won the Wessex Salver at Gloucester Golf Club. Frances gave a thank you speech in front of 80 parents, golfers and fellow team members. Frances has worked hard to improve her golf and bring her handicap down to below 11 allowing her to play in National Competitions.



Zero Heroes

An astonishing 470 students have received NO behaviour points this term –. In a shake up from previous years instead of a letter home these ZERO HEROES all received an additional 20 House Points and their names were put into a prize draw.

Each house then had an opportunity to have a winner each. The winners received a £25 gift voucher during tutor time! Each term the same thing will happen and there is the opportunity for all 'Zero Heroes' to be entered into the draw.

The changes to Zero Hero rewards were made following feedback from our students.

This term's winners were; Olivia W (Dragon), Eden P (Griffin), Edith D (Phoenix) & Zach W (Unicorn). #Well done! Good work #TeamNailsea



ASPIRE | BELIEVE | SUCCEED

Nailsea School Mizzymeard Road Nailsea BS48 2HN
01275 852251 | nailseaschool.com | info@nailseaschool.com



World Mental Health Day - Fundraiser

For this year's World Mental Health Day, Phoenix House Captains and friends organised a cake sale at break and lunch in the atrium and in the staff room for teachers.

The money raised by selling these cakes was donated to the charitable organisation 'Mind'. Mind is an organisation that gives information about mental health and supports anyone that reaches out. They give support to adults and also children ages 11-18.

They give advice on reaching out, opening up to friends and family and understanding diagnoses. It is important that both adults and kids are supported if struggling, as no one deserves to be fighting alone. If you would like to visit and explore this website for yourself then head to www.mind.org.uk.



The students raised a fantastic **£192.55** for the charity! Well done to the House Captains and friends who worked together to make this happen, an excellent job! Thanks also to everyone who made and bought cakes there were some absolutely stunners to choose from!



Big Green Weekend Winner!

Well done to Griffin student—Abi who entered her Geography homework for an awareness competition at the Big Green Weekend in Nailsea last weekend. Abi won, not just her category but was also awarded the overall winner! Well done, Abi!



Children's Hospice South West Fundraiser!

Anyone having had dealings with The Childrens Hospice South West will know just how valuable it is. So well done to Griffin student Peter C, who has been raising money for the Hospice. Peter agreed to have his head shaved for this great cause.

Children's Hospice South West help and support children and their families who are living with life-limiting conditions. They provide a loving and caring place for the whole family. A place where everyone can find expert care and support in facing an uncertain future. You can find out more here www.chsw.org.uk

Peter, along with others have raised **£400** for the children's hospice. If you would like to support The Childrens Hospice your contribution would be gratefully received, you can do via their Just Giving Page [HERE](#) . Well done Peter!

ASPIRE | BELIEVE | SUCCEED

Nailsea School Mizzymead Road Nailsea BS48 2HN
01275 852251 | nailseaschool.com | info@nailseaschool.com



Visit the ABSolute Curriculum page on our website for further information: [ABSolute Curriculum – Nailsea School](https://www.nailseaschool.com/absolute-curriculum)

Guests

Year 8 welcomed Lieutenant Chris Whitbread from the local Nailsea Army Cadets Unit to talk to them about the opportunities available to them if they joined the cadets. This was another great reminder for the students to seize the day and try new things. Once again, we were pleased to work with a local mental health charity, Off the Record (OTR), who did a lunch time pop-up as part of World Mental Health Day. The support that they were able to offer students was really appreciated by them.

Assemblies

Mrs. Elliott – ‘Make it Happen’. #makeithappen

Our first assembly of the academic year was delivered by Mrs. Elliott who encouraged students to *make it happen* this year. To take the chances that they have at Nailsea School and to make things happen in their life. By taking that responsibility, everyone can be successful. Mrs. Elliott also reflected on the life and achievements of Queen Elizabeth II, including some of her most memorable quotes. One such quote was from Queen Elizabeth II's Christmas broadcast in 1975 'it does matter therefore what each individual does each day. Kindness, sympathy, resolution, and courteous behaviour are infectious'.



Mrs. Rutty - ‘Embracing Opportunities’.

Mrs. Rutty delivered her assembly based on the theme ‘Embracing Opportunities’ where students were encouraged to step out of their comfort zone to try new things, learn new skills and take advantage of the many opportunities that come their way #chooseyourownadventure

Mrs. Nicholson - ‘Black History Month’.

It was fantastic to have the History department involved in this assembly, when joint Head of History, Mrs. Nicholson, delivered the assembly on Black History Month. We learnt about different black inventors; the Bristol bus boycotts and other pieces of Black History. The theme for this year's Black History Month internationally is **Time for Change: Action not words**. In that spirit, Mrs. Nicholson challenged the students to go and discover more about Black History and tell their history teacher what they have found and what they would like to study more of. We cannot learn about all of black history in a month, and nor should we! It's time for change, **today!**

ASPIRE | BELIEVE | SUCCEED

Nailsea School Mizzymead Road Nailsea BS48 2HN

01275 852251 | [nailseaschool.com](https://www.nailseaschool.com) | info@nailseaschool.com



Extended Tutor Time

Please find below some helpful links to support your child/children in line with the topics that they have been learning about this term through Extended Tutor Time (ETT).

Year 7

Risk and Safety: Why are friends important; Anti-bullying; Transition to secondary

- > [Supporting children's transition to secondary school | Childrens mental health and wellbeing in schools | Anna Freud Centre](#)
- > [How Parents Can Help With Secondary School Transition | YoungMinds](#)
- > [Parents and Carers \(anti-bullyingalliance.org.uk\)](#)

Growing Up: What is puberty; Puberty Key Questions

- > [Puberty 101 | A parent's guide to puberty \(sexedrescue.com\)](#)
- > [4youmarch2010nonprinting.pdf \(www.nhs.uk\)](#)

Year 8

Body Image: Negative and Positive Self Talk; How can negative body image affect us?

- > [Body image | YoungMinds](#)

Emotional wellbeing and mental wellbeing: What impacts our mental wellbeing; How do I cope with loss and bereavement; Recognising the signs of poor mental health; Who can help? – support services

- > [Home - OTR - North Somerset \(otrnorthsomerset.org.uk\)](#)
- > [Parents' A-Z Mental Health Guide | Mental Health Advice | YoungMinds](#)
- > [How to Talk to Your Child about Mental Health | YoungMinds](#)

Year 9

Planning for the future: What do I need to plan for; What opportunities are out there for me; How do I improve my prospects; What does the law say about work; Growth Mindset

- > [It's time to take control of your future | Springpod](#)
- > [Careers advice - job profiles, information and resources | National Careers Service](#)

Year 10

Relationships: Relating to others; Skills for successful relationships; Parenting skills and family life

Sex, sexuality and sexual health: Sexual health

- > [Sexual Health & Wellbeing - Brook – Healthy lives for young people](#)

Year 11

Sex, sexuality and sexual health: Consent; Sexual Relationships; Pregnancy choices

Relationships: Exploitation and abuse in relationships; Help and support for relationships

- > [Sexual Health & Wellbeing - Brook – Healthy lives for young people](#)

ASPIRE | BELIEVE | SUCCEED

Nailsea School Mizzymead Road Nailsea BS48 2HN

01275 852251 | nailseaschool.com | info@nailseaschool.com



NAILSEA SCHOOL STARS

Celebrating those that have aimed a little bit higher, believed in going the extra mile and succeeded in reaching their goals. If there's someone you think deserves "Nailsea School Stars" recognition, then please do drop us an email with details to fdavies@nailseaschool.com

Year 7

- ★ Miss Chamberlain gives a big shout out to Harry D in Expressive Arts, for pushing himself to contribute fully in class, demonstrating good learning in art.
- ★ Mrs. Lange is awarding 'star status' to Arlo R in English / Drama, for the fantastic start you've made to the year. Well done!
- ★ Miss Wild is awarding 'star status' to Alice R in Health, for amazing first few matches for the Year 7 netball team. Your star quality is also seen in PE lessons.
- ★ Ms Hancock-Martin is giving star-status to Raiya R in Expressive Arts, for always offering to help give out props in lessons. Super helpful!
- ★ Mrs. Lange is giving star-status to Jacob D in Humanities, for the fantastic start you've made to the year. Well done!
- ★ Mrs O'Reilly is really impressed with Mari Y in MFL, for constantly 'aiming higher' in Spanish and ETT.
- ★ Mrs E Sutherland thinks you're a star Lottie G in Maths, for immersing yourself in the maths community at the Formula 1 Maths club.

Year 8

- ★ Miss Cahill is giving star-status to Oli H in MFL, for working well with Mrs Glover and always willing to help at start of lesson.
- ★ Ms Cowling is really impressed with Phoebe W in English / Drama, for showing real resilience in English lesson and trying her best.
- ★ Mrs Humphries is really impressed with Erin V in Expressive Arts, for promoting Nailsea School as well as the music department in our latest open evening. She is also working incredibly hard in lessons as well as extra curricular ensembles. Well done!
- ★ Mrs Booker is really impressed with Toto P in Humanities, for always being willing to help others with kindness and patience.
- ★ Mrs Rogers is really impressed with Archie B in Maths, for making a great start to Year 8 and being more focussed in lessons.
- ★ Mr Graffagnino says you are a star Florence N in Health, for always helping individuals and the class to achieve their best.

Year 9

- ★ Dr. Jessop gives a big shout out to Peter F in Business / IT, for being an expert in the latest developments in IT
- ★ Ms Jacobs gives a big shout out to Seb C in English / Drama, for the fantastic start you've made to the year. Well done!
- ★ Mrs Wells gives a big shout out to Amalie M in Health, for showing increased focus, effort and determination in lessons.
- ★ Ms Thompson gives a big shout out to Hithissa S in Humanities, for an amazing model of a destructive plate boundary.
- ★ Mr Paillier is awarding 'star status' to Emily H in MFL, for always being polite and considerate and making a fantastic start to year 9 in Spanish.
- ★ Mrs E Sutherland is nominating Elizabeth B in Maths, for always being kind and smiley to everyone.
- ★ Mr Burgess is really impressed with Genevieve B in Science, for working hard in lessons and getting a great score in the Chemistry assessment.

ASPIRE | BELIEVE | SUCCEED

Nailsea School Mizzymead Road Nailsea BS48 2HN

01275 852251 | nailseaschool.com | info@nailseaschool.com



NAILSEA SCHOOL STARS - CONTINUED

Celebrating those that have aimed a little bit higher, believed in going the extra mile and succeeded in reaching their goals. If there's someone you think deserves "Nailsea School Stars" recognition, then please do drop us an email with details to fdavies@nailseaschool.com

Year 10

- ★ Mrs Ruddy gives a big shout out to Jacob W in English, for having a consistently positive attitude to his GCSE English studies.
- ★ Mr Early is awarding 'star status' to Joshua P in Science, for working hard and trying his very best in Science.
- ★ Mrs Booker is awarding 'star status' to Phoebe S in Humanities, for always working hard, contributing fully and showing great empathy with the subject content.
- ★ Mrs Rogers is awarding 'star status' to Anna P in Maths, for making a great start to Year 10.
- ★ Mrs Dunn is awarding 'star status' to Sarah B in MFL, for making a great start in Spanish and keeping her book as a beautiful reference tool.
- ★ Dr. Jessop is really impressed with Olivia M in Business / IT, for consistent effort and excellent progress.
- ★ Ms Davies is really impressed with Rhys M in Expressive Arts, for making such a great start with his clay modelling in 3D Art.
- ★ Mrs Gardiner is really impressed with Connie H in Health, for her efforts in Health and Social Care so far.
- ★ Mr Bradley is really impressed with Elsie F in Science, for her dedication to improving.

Year 11

- ★ Mr Truan gives a big shout out to Harry T in Health, for his improved attitude and positive contribution during class discussions.
- ★ Miss Hitchings is giving star-status to Poppy R in Drama, for excellent motivation and creativity in her devising work.
- ★ Miss Britton is nominating Alfie B in Expressive Arts, for having a great attitude towards his learning this term.
- ★ Ms Thompson is really impressed with Seth H in Humanities, for his determination to improve in Geography.
- ★ Mrs E Sutherland is really impressed with Maddi D in Maths, for her commitment to Maths.
- ★ Mr Paillier is really impressed with Poppy R in MFL, for making the most of opportunities to progress in Spanish, inside and outside of lessons. Keep up the great work!
- ★ Miss Creswick wants to nominate Scarlett L in English / Drama, for putting in so much effort in preparation for the mock series and going over and above in the homework tasks.
- ★ Dr. Jessop was so impressed with John C in Business / IT, for fantastic focus, effort and enthusiasm.

Sixth Form

- ★ Miss Cahill gives a big shout out to Lily H, Lily B-J, Jenny C & Rose LJ in 6th Form, for an excellent start to A Level French - bravo!
- ★ Mrs Macleod is giving star-status to Maisie J, Lily B, Sarah V, Lola S, Lola W, Ciara M, Jasmine H in 6th Form, for planning and delivering fantastic lunchtime sessions in the Hub last week! Really impressed.
- ★ Ms Davies is really impressed with Molly W, for commitment to learning in Art and Photography - awesome start!
- ★ Ms Thompson is awarding 'star status' to Rosie H in 6th Form, for aiming high by completing additional reading for her Geography A level.
- ★ Ms Thompson is really impressed with Sam M, for an original EPQ project which demonstrates superb research and analytical skills.

ASPIRE | BELIEVE | SUCCEED

Nailsea School Mizzymeade Road Nailsea BS48 2HN

01275 852251 | nailseaschool.com | info@nailseaschool.com