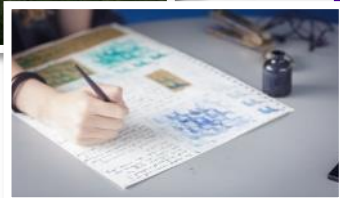
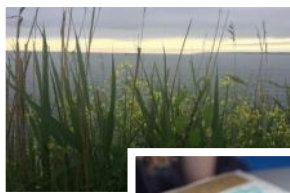
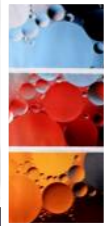


YOUR JOURNEY

YOUR FUTURE...



Prospectus 2023

Nailsea School Sixth Form

Mizzymead Road | Nailsea | North Somerset | BS48 2HN | www.nailseaschool.com



CONTENTS

2	Welcome
3	How to Apply
3	Option Blocks
4	Entry Requirements
5	Priority Football Academy
6	Art, Craft and Design A Level
7	Biology A Level
8	Business Studies Level 3 Cambridge Technical
9	Chemistry A Level
10	Criminology Level 3 Applied Diploma
11	English Language A Level
12	English Literature A Level
13	Extended Project Qualification
14	Film Studies A Level
15	Forensic and Criminal Investigation BTEC Level 3 National Diploma
16	French and Spanish A Level
17	French and Spanish A Level continued
18	Geography A Level
19	Health & Social Care BTEC Level 3 National Extended Certificate
20	Health & Social Care BTEC Level 3 National Extended Diploma
21	History A Level
22	ICT Level 3 Cambridge Technical
23	Maths A Level
24	Maths (Further) AS + A Level
25	Media Studies A Level
26	Philosophy, Ethics and Religion A Level
27	Photography A Level
28	Physical Education A Level
29	Physics A Level
30	Politics A Level
31	Psychology A Level
32	Sport and Physical Activity Level 3 Cambridge Technical Extended Certificate
33	Sport and Physical Activity Level 3 Cambridge Technical Extended Diploma

Welcome to Nailsea School

Sixth Form

Nailsea Sixth Form is a vibrant learning community with an inclusive ethos, offering a range of Level 3 courses alongside an extensive enrichment programme. We are proud of the high standards of teaching and learning that our students experience from subject specialists in excellent facilities, however we also place great emphasis on developing the holistic student, seeking to support our learners in their journey towards becoming well-rounded individuals who positively contribute to our local and the wider community.

Student Support

We are a Sixth Form with a well-known and yet growing reputation for high quality post 16 education, delivering impressive student outcomes that compare favorably with both local and national centres, with our Year 13 cohorts consistently exceeding their target grades. However, we strongly believe that students come first and prioritise their wellbeing, ensuring a wide range of pastoral support is readily available within the Sixth Form. All students will have a personal Tutor, Head of Year and a dedicated Sixth Form Mentor to provide personalised academic and personal support.

Independent Learners

At Nailsea we are passionate about creating independent learners and empowering students to embrace our mantra 'your journey, your future'. We collaborate with students to develop valuable leadership skills, encouraging them to become fully independent in driving their own academic ambitions. Alongside everyday leadership, we have formal leadership roles through our Prefects who are integral to our Sixth Form and wider school community. Every student demonstrates leadership in different ways which we embrace and celebrate as a community.

Enrichment

Our 360° Enrichment Programme is designed for students to study concepts in greater depth and complexity or spark the curiosity to pursue areas of interest that will support their holistic development and benefit their future life choices. Enrichment is timetabled on a Tuesday afternoon, however there are many opportunities that fall outside of this time allocation into our wider whole-school extra-curricular programme or through personalised placements that have been organised by individual students. We are confident that we have created a broad and balanced offer which will be of value to each individual.

Following their time at Nailsea Sixth Form, students are well equipped with the skills, experience and qualifications to succeed. Every year we have students who decide to continue their learning journey in Higher Education, apprenticeship programmes and employment, with many of these joining competitive universities or national organisations.

Thank you for taking the time to consider Nailsea Sixth Form.

Mr D Truan Head of Sixth Form

DTruan@nailseaschool.com

Mrs D Elliott Headteacher

DElliott@nailseaschool.com

Key Dates

24 November 2022 5.00 - 7.00pm	Sixth Form Open Evening
9th December 2022	Application Deadline
January – February 2023	Candidate Interviews
4th July 2023	Sixth Form Induction Day

"The Sixth Form supports students well in their learning and next steps...subjects are taught by teachers who have strong subject knowledge and the curriculum is well thought out. These teachers provide challenging tasks with opportunities for discussion and debate. As a result, students achieve well."



How to Apply

Application forms will go live on 24 November 2022 at Sixth Form Open Evening. To apply, visit the Sixth Form page on our website to complete the online form. www.nailseaschool.com/sixth-form/apply-to-sixth-form/



Applications should be received by 9 December 2022.

Please Note

All Sixth Form students must re-sit GCSE English and Maths if they have not achieved a Grade 4 in either of these subjects. These sessions will automatically be allocated to their timetable, with lessons being compulsory.

We are unable to guarantee that all courses promoted in this prospectus will be running from September 2023, as this will be dependent on student numbers. If a course is not running, we will inform you at the earliest opportunity.



Nailsea Sixth Form Option Blocks

We will be expecting students to select the equivalent of three A level subjects to study. Each subject choice must come from a different option block.

There will be an opportunity to study a fourth A level for those students who achieve Grade 7 or above across their GCSE's, however the option blocks will still apply.



A	B	C	D	E	F
Biology	Physics	Chemistry	Maths	Maths	Further Maths
Politics	History	Philosophy, Ethics & Religion	English Language	History	
Health & Social Care (National Extended Certificate)	Media Studies	Geography	English Literature	Geography	
ICT	Forensic & Criminal Investigation	Forensic & Criminal Investigation	Criminology	Criminology	
French	Photography	Art, Craft & Design	Business Studies	Business Studies	
Psychology	Film Studies	Sport & Physical Activity (Extended Certificate)		Psychology	
Health & Social Care (Extended Diploma)		Physical Education		Spanish	
Sport & Physical Activity (Extended Diploma)					

Entry Requirements

5 Grade 4s or above as well as meeting the individual entry requirements of your chosen Level 3 courses.

Subject	Grade in subject at GCSE	Additional Grades
Art, Craft and Design	4 in Fine Art or 3D Art	
Biology	66 in Science or 6 in Biology and 6 in another science	6 in Maths
Business Studies		4 in English Language and Maths
Chemistry	66 in Science or 6 in Chemistry and 6 in another science	6 in Maths
Criminology		4 in English Language
English Language	5	5 in English Literature
English Literature	5	5 in English Language
Film		5 in English Language
Forensic and Criminal investigation	55 in Science	4 in English Language and Maths
French	5 in Higher Paper	
Geography	5	
Health and Social Care National Extended Certificate		4 in English Language
Health and Social Care National Extended Diploma		4 in English Language and 44 in Science
History	5	5 in English Language
ICT		
Maths	7	
Further Maths	7	
Media Studies		5 in English Language
Physical Education	5 or Distinction	5 in Maths, 5 in English Language, 55 in Science
Photography	4 in Photography or Art	
Philosophy, Ethics and Religion		5 in English Language
Physics	66 in Science or 6 in Physics and 6 in another Science	6 in Maths
Politics		5 in English Language
Psychology		5 in English Language, 55 in Science, or 5 in Biology and 55 in other Sciences, and 4 in Maths
Spanish	5 in Higher Paper	
Sport and Physical Activity Extended Certificate	4 or Merit	4 in Maths, 4 in English Language and 44 in Science
Sport and Physical Activity Extended Diploma	4 or Merit	4 in Maths, 4 in English Language and 44 in Science

Priority Football Academy

@ Nailsea Sixth Form



Incorporate football into your studies, with weekly training sessions during the school day and midweek fixtures in the English Colleges FA League. A career in football may not be as far away as you think...

As the sports industry continues to expand at a rapid rate, the career opportunities within it have never been better for young people with an interest in sport and exercise. For most students, A-levels are the only viable route to further education through your school, but they're not for everyone.

In a bid to provide interested students with another viable pathway into further education, and a career in the sports industry, Priority Football Academy are operating out of Nailsea School to offer a Level 3 Sports course which equates to three A levels.

What is Priority Football Academy?

Priority Football Academy operates out of Nailsea School to offer a full-time football program that incorporates professional training, competitive fixtures and performance analysis, into students' timetables.

All training sessions are led by UEFA qualified coaches Adam Davidson and Robert Prior. Enrolled students can expect a full-time training program that includes three weekly training sessions on a 4G all-weather pitch, a bi-weekly 30-minute video analysis session and 20+ competitive ECFA fixtures over the course of the academic year.

Professional football academies across the globe are increasingly using performance analysis to optimise the learning environments they create for their players. We want to create that same experience for our students here at Priority Football Academy; allowing them to get to grips with the tools and resources used in the professional game whilst working alongside coaches and analysts with decades of experience in the sports industry.

What are the Possibilities?

Develop as a student-athlete in a professional environment whilst studying a Level 3 Sports course which equates to three A levels. Train as part of a team and play against some of the South West's best footballers in a nationally recognised ECFA competition with opportunities to represent your country at college level, and put yourself in front of a broad network of academy scouts.

This course will tap into your aptitude for sport and give you the tools and resources to take your next step towards a successful career in sport. Upon completion of the course, student-athletes will be encouraged and supported in taking full advantage of the following opportunities:-

- Exit routes to professional academies and semi-pro clubs.
- Full assistance with US College Scholarship applications.
- Travel and work as a football coach in the United States.
- Enough UCAS points to attend university.
- Paid apprenticeship program for talented coaches.
- Coach and analyst internships with local professional clubs.



Progression Post – 18

The UK boasts several specialist Universities when it comes to playing and studying sports and performance. Local Universities such as USW, Bath and Hartpury as well as Loughborough, Glasgow and Exeter are some of the top sports performance Universities that can provide you with valuable experience and qualifications essential for further progression within sport.

In addition, Priority Football Academy can help you gain a scholarship studying and playing at a University.

If this course is of interest to you, we would love to speak with you about how we can make your football dreams a reality. Please register your interest at www.priorityfootballacademy.co.uk/join. As there are a limited number of spaces available on this course, we ask that you please endeavour to register your interest as early as possible.

Art, Craft and Design A Level

Contact Person: Ms R Davies

Course Outline:

This course will encourage you to develop your artistic and creative responses to a range of subject matter and themes. Whether your main interest is in painting, clay modelling or design, the course can be adapted to suit your creative interests and skills. Over the two years you will be expected to plan, resource and develop projects in an increasingly independent manner, showing that you can work meaningfully with a number of different media to communicate your ideas. You will also explore the use of drawing for different purposes, using a variety of methods and media.

There are two units of work to complete each year. In Year 13 these are 'Component 1: Personal Investigation' and 'Component 2: Externally Set Assignment'. During the Personal Investigation you are required to conduct a practical investigation into an idea, issue, concept or theme supported by written material (between 1000-3000 words). The Externally Set Assignment is published by AQA in February of each year, and following a preparatory period of work you will undergo a 15-hour (3 day) supervised exam, during which you will culminate your investigation.

Skills / Aptitudes Developed / Required:

You will be expected to demonstrate skills in your chosen area of study within Fine Art (painting, mixed media, printmaking), Graphic Communication (design, illustration, graphics), or Three-dimensional design (sculpture, ceramics, environmental design) etc. A high level of commitment is needed, as you will be expected to work with independence, and guide the direction of your projects, with the support of your teachers.

Entry requirements are a Grade 4 and above at GCSE Fine Art or 3D Art.

Additional Considerations:

Art, Craft and Design students are expected to make regular trips to local galleries, and keep sketchbooks that document your contextual investigations, drawings, and developing ideas.



Progression Post-18

Foundation Course Diploma in Arts/Media Arts (diagnostic courses designed to help students to target a specialist area for study within the Arts). Degree level courses in Fine Art, Illustration, Media Arts, Animation, Textiles, Graphics and Architecture.

Careers in any number of creative industries; galleries, education, design, media, advertising....

Biology - A Level

Contact Person: Miss I Smith

Course Outline:

You will study:

1. Biological molecules
2. Cells
3. Organisms exchange substances with their environment
4. Genetic information, variation and relationships between organisms

In the second year of A Level you will study:

5. Energy transfers in and between organisms
6. Organisms response to changes in their internal and external environments
7. Genetics, populations, evolution and ecosystems
8. The control of gene expression

There is no coursework on this course, however, your performance during practicals will be assessed.

There are three exams at the end of the two years all of which are two hours long. At least 15% of the marks for A-level Biology are based on what you will have learnt in your practicals.

Skills/Aptitudes Developed/Required:

Two Grade 6s in Science (if doing Triple Science at GCSE, one of these should be in Biology), a 6 in Maths.

You must be able to communicate effectively, analyse, evaluate and explain information. You will need to be confident with Maths, as at least 10% of the marks in assessments for biology will require the use of mathematical skills.

Additional Considerations:

An interest in science and living organisms is important, as is a willingness to work hard and enjoy learning in a variety of different ways.



Progression Post-18

Biology leads on to a wide range of courses and careers. Including medicine, dentistry, veterinary science, law, optometry, sports science, microbiology, environmental science, biotechnology, NHS life science careers, zoology, food science, animal behaviour and nursing. As well as degree options, the skills you learn during Biology A Level such as analysis, interpretation, investigation, research and problem solving are highly valued by a number of employers and training providers.



Business Studies - Cambridge Technical Level 3

Contact Person: Dr N Jessop

Course Outline:

5 Units—3 mandatory (Units 1, 2 and 4) + 2 Choice Units

Unit 1—The Business Environment (Externally Examined)

In this unit you will develop an understanding of how and why businesses operate in the way they do. You will look at the range of different types of business and business structures, and explore how the ownership of a business and its objectives are interrelated.

Unit 2—Working in Business (Externally Examined)

This unit will cover the skills and understanding needed to work effectively within a business environment. This includes arranging meetings, working with business documents, making payments, prioritising business activities and communicating with stakeholders.

Unit 4 Customers and Communications (Coursework)

In this unit you will learn the purpose, methods and importance of communication in business and the appropriateness of different forms of communication for different situations. You will develop the skills that will help you create a rapport with customers and have the opportunity to practice and develop your business communication skills.

Skills/Aptitudes Developed/Required:

Data manipulation, presenting arguments and making judgements and justified recommendations on the basis of available evidence, problem solving and using appropriate business tools to identify a solution. You will challenge your own assumptions using evidence, and need to be self motivated due to the amount of research required for each unit.

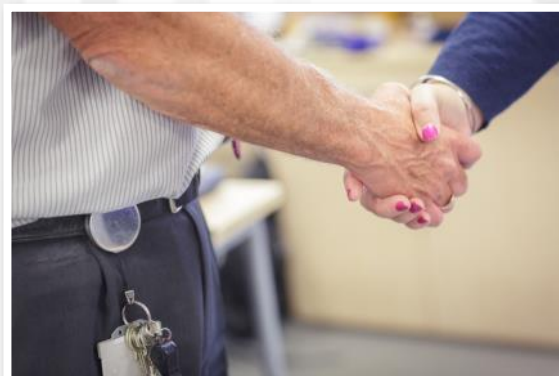
Additional Considerations:

5 Grade 4s at GCSE, including Maths and English. You do not have to have studied Business at Key Stage 4.



Progression Post-18

A myriad of post 18 business courses, management routes, vocational routes, etc.



Chemistry - A Level

Contact Person: Mr M Early

Course Outline:

Chemistry is for you if...

You want impressive skills to show off to future employers, e.g data handling, analysis, problem solving, collaborative working.

You are not afraid to get stuck on new concept and will enjoy having to work them out.

You don't like essay writing—but you do enjoy methodically working through calculations.

You are unsure what to do but enjoy chemistry and would like to keep your options open.

Year 1

Module 1: Development of practical skills in chemistry.

Module 2: Foundations in chemistry:

- Atoms, ions and compounds, amount of substance, acids and redox, electrons and bonding & shapes of molecules

Module 3: Periodic Table and Energy:

- Periodicity, reactivity trends, enthalpy, reaction rates and equilibrium.

Module 4: Core organic chemistry and analysis:

- Basic concepts, alkanes, alkenes, alcohols, haloalkanes, organic synthesis and spectroscopy.

Year 2

Module 5: Physical chemistry and transition elements:

Module 6: Organic chemistry and analysis.

Skills/Aptitudes Developed/Required:

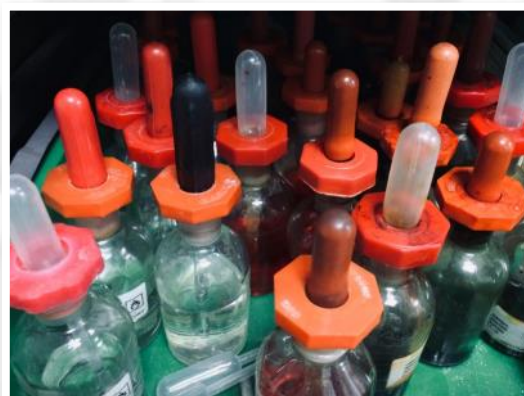
Logical thought, problem solving, precision and accuracy.

Conceptual thought both required and developed.

Students require a 6 in Triple Science (Chemistry) or a 6/6 in Combined Science.

Additional Considerations:

Students will also require a 6 in GCSE Mathematics.



Progression Post-18

Previous A Level Chemistry students have gone on to study a range of scientific and non-scientific courses at university. These include: medicine, dentistry, mathematics, biochemistry, engineering, architecture, languages, music, economics and veterinary sciences.

A Level Chemistry is a required A Level for most medicine, dentistry and veterinary courses.

Criminology

WJEC Level 3 Applied Diploma

Contact Miss A Cartwright

Course Outline:

This exciting new course will give you an understanding of criminology that is relevant to many job roles within the criminal justice sector, social and probation work as well as sociology and psychology

1 Changing Awareness of Crime - Internal

This will help you understand different types of crime, influences on perceptions of crime and why some crimes are unreported.

2 Criminological Theories - External

This will help you understand why people commit crime, drawing on what you have learned in Unit 1.

3 Crime Scene to Courtroom - Internal

This will provide an understanding of the criminal justice system from the moment a crime has been identified to the verdict. You will examine information in order to review the justice of verdicts in criminal cases.

4 Crime and Punishment - External

This will help you understand awareness of criminality, criminological theories and the process of bringing an accused to court in order to evaluate the effectiveness of social control to deliver criminal justice policy.

You will develop:

- skills required for independent learning and development
- a range of generic and transferable skills
- the ability to solve problems
- the skills of project based research, development and presentation
- the fundamental ability to work alongside other professionals, in a professional environment
- the ability to apply learning in vocational contexts

Assessment

The following units are internally assessed:

- Unit 1: Changing Awareness of Crime
- Unit 3: Crime Scene to Courtroom

This can be a model assignment set by the exam board or adapted to reflect local situations.

The following units will be externally assessed:

- Unit 2: Criminological Theories
- Unit 4: Crime and Punishment
- 90-minute examination

Additional Considerations:

Ideally students will have achieved a broad range of GCSE at Grade 4 and above, including English Language.



Progression Post-18

The main purpose of the WJEC Level 3 Applied Diploma in Criminology is to use the qualification to support access to higher education degree courses, such as:

- BSc Criminology
- BSc (Hons) Criminology and Psychology
- LLB (Hons) Law with Criminology
- BA (Hons) Criminology and Sociology
- BSc (Hons) Psychology and Sociology

Alternatively, the qualification allows learners to gain the required understanding and skills to be able to consider employment within some aspects of the criminal justice system, e.g. the National Probation Service, the Courts and Tribunals Service or the National Offender Management Service.

English Language - A Level

Contact Person: Ms C B Jacobs

Course Outline:

A Level comprises of two examined components and one non-exam assessment:

Language, the individual and society (2hr 30 minute exam worth 40% of A Level);

Language diversity and change (2hr 30 minute exam worth 40% of A Level) and

Language in action (two pieces of coursework: an investigation and piece of original writing with commentary. This is worth 20% of your A Level).



Skills/Aptitudes Developed/Required:

The course aims to encourage you to develop interest and enjoyment in the study of spoken and written language. Through reading widely, critically and independently you will gain extensive knowledge of the issues and attitudes surrounding the subject and broaden your understanding of the historical, geographical and social impact on the development of the English Language. You will develop skills in speaking and writing for different purposes and audiences. You will learn how to carry out an investigation on a topic of your choice.

The Faculty encourages A Level students to enrich your subject knowledge by attending extra-curricular lectures when appropriate.

Additional Considerations:

Generally it is expected that when you take this subject at A Level you will have achieved a Grade 5, or above, in both English and English Literature at GCSE. A student who is hardworking and committed can also be accepted with lower grades as long as the previous year's teacher confirms that the student would benefit from this course.

Progression Post-18

English and English Lit. are highly regarded by both universities and in the workplace, given its obvious connection with the skills of communication both written and spoken. Our students have gone on to university courses in English, Philosophy, Media, Linguistics, Law and History, and to careers in Law, Journalism, Media, and Education to name but a few.

English Literature - A Level

Contact Person: Ms C B Jacobs

Course Outline:

The A Level course comprises of the study of three units:

Component 01 - Drama & Poetry pre-1900. 40% 2 hours 30 minutes.

Component 02 - Close reading in chosen topic area— comparative and contextual study from chosen topic area. 40% 2 hours 30 minutes.

Component 03 - Close reading OR re-creative writing piece with commentary. Comparative essay 20% Non Examination Assessment.

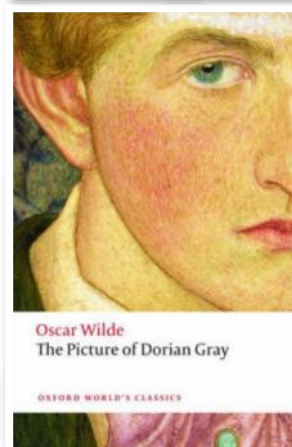
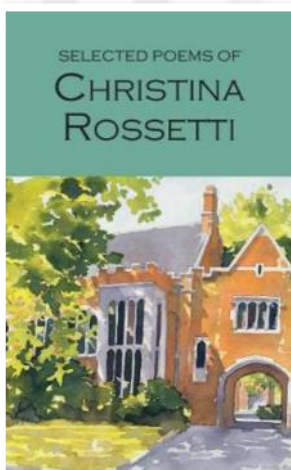
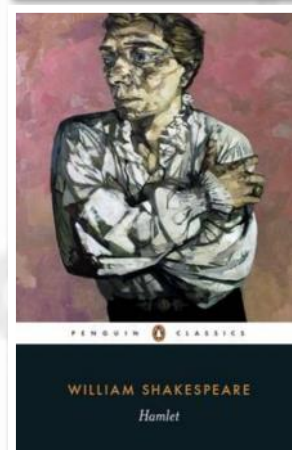
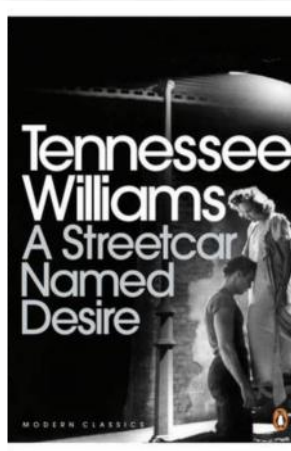
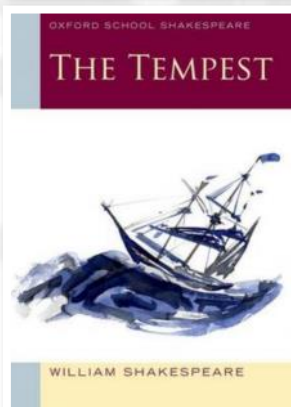
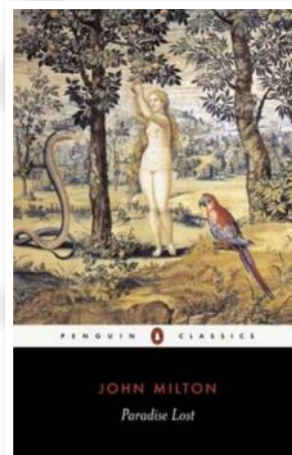
Skills/Aptitudes Developed/Required:

The course aims to encourage you to develop interest and enjoyment in the study of novels, plays and poems through reading widely, critically and independently. It will introduce you to the traditions of English Literature. You will develop your responses both in writing and in articulating your views in class discussion.

The Faculty encourages you to enrich your subject knowledge by attending such events as theatre trips, visits to art galleries, films and lectures.

Additional Considerations:

Generally it is expected that you will have achieved a Grade 5, or above, in both English and English Literature GCSE. A student who is hardworking and committed can also be accepted with lower Grade 4 as long as the previous year's teacher confirms that the student would benefit from this course.



Extended Project Qualification

Contact Person: Mr D Truan

Course Outline:

Students taking an EPQ will be expected to complete their own research project and deliver an assessed presentation on their work. This could be a 5000 word essay on any question or subject of their choice, or alternatively students can create an artefact or product. A project log will also need to be produced, providing details of specific research and tracking the student's progress in this qualification. The EPQ is worth half an A Level and is well received in both Higher Education and employment, demonstrating valuable learning behaviours such as commitment and independence to their chosen area of study.

Skills/Aptitudes Developed/Required:

The qualification is designed to develop independent research techniques into a chosen area of interest, supported through effective planning, time management and reflection.

Additional Considerations:

This qualification attracts the same UCAS tariff points as half an A Level, and therefore students who receive a points offer from university will benefit from studying the EPQ. Some universities also routinely give alternative offers to students who have studied the EPQ, increasing their chances of attending first choice and competitive universities.

The EPQ is launched to all Year 12 students in Term 2. The students who apply will have a 1:1 conversation with the Sixth Form Leadership Team regarding their suitability.



Progression Post-18

All universities like this qualification as it develops skills and teaching methods that they will build on. The independent approach is something employers will look for too.

Film Studies - A Level

Contact Person: Miss G Britton

Course Outline:

A Level Film Studies engages you in the academic in-depth study of Films and their industry. The films on the course cover a wide breadth of styles and techniques, including silent, documental, experimental and short films. The course also offers opportunities to study mainstream American films from the past and the present as well as a range of recent and contemporary British films, American independent films and global films, both non-English language and English language. You will be able to investigate how film works both as a medium of representation and as an aesthetic medium.

There are three core areas that you will study throughout the course:

Area 1: The key elements of film form: cinematography, mise-en-scène, editing, sound and performance

Area 2: Meaning and response: how film functions as both a medium of representation and as an aesthetic medium

Area 3: The contexts of film: social, cultural, political, historical and institutional, including production. In addition, you will also study: Spectatorship, Narrative, Ideology, Auteur, Critical debates, Filmmakers' theories.

Assessment:

Paper 1 – 3 questions based on your study of 6 set films. One of the questions will be comparative.

Paper 2 – 4 questions based on your study of 5 set films.

Both exams are 2.5 hours and are each worth 35% of the A Level grade.

There is a variety of question types and length, although most are extended responses.

Non-Exam Assessment:

You will either create a short film or a screen play. You will write an evaluative analysis of 1600-1800 words.

Skills/Aptitudes Developed/Required:

You will need to be interested and excited by film and filming techniques. You will enjoy debate and discussion about theories and ideas related to films. You will develop analytical and research skills. The course is academic – whilst you will be watching films, you will be expected to be able to analyse them in depth and detail.

Additional Considerations:

Grade 5 in English GCSE. You do not need to have studied Media Studies or Film at GCSE. You do not need to own any specialist equipment. Some of the films will be in black and white, silent or with subtitles.



Progression Post-18

The Film Industry has over 2.1 million people employed - these are not only jobs that are directly involved with the camera and the set, but also HR, marketing and advertising, finances, catering, etc. Jobs in the film industry have a salary that is 68% higher than the average salary nationwide.

Career progression paths can vary from continuing to study Film Studies at Degree level to Advanced Apprenticeships inside the industry. Previous students have gone onto study Film at Warwick and Bristol.

Forensic and Criminal Investigation

BTEC Level 3 National Diploma

Contact Person: Miss I Smith

Course Outline:

This course, equivalent to 2 A Levels, is an applied qualification perfect for students wishing to study forensic science and criminology courses at university, or if you want a practical career in the forensic science field or any other lab based employment.

There are plenty of practical activities to boost your understanding of scientific techniques as part of the mandatory units that cover the principles of forensic science before moving onto applications of criminology and forensics in criminal law.

The content of the qualification has been developed alongside academics, universities and other higher education providers to ensure that it supports progression beyond sixth form.

You will study:

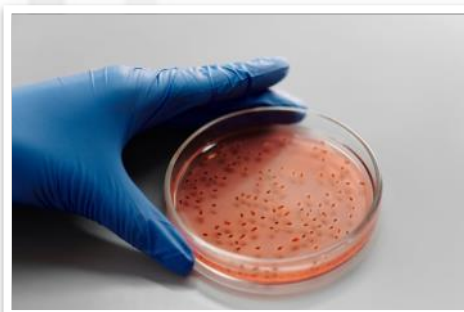
- Principles and Applications of Science
- Practical Scientific Procedures and Techniques
- Science Investigation Skills
- Forensic Investigation Procedures in Practice
- Applications of Criminology
- Criminal Investigation Procedures in Practice
- Physiology of Human Body Systems

Plus one other unit from a selection including Forensic Fire Investigation, Forensic Traffic Collision Investigation and Forensic Genetics.

This course is assessed with both internal assessments (54%) and external assessments (46%). The internal assessments will be assessed through assignments, practical tasks, experiments and crime scene assessments.

Additional Considerations:

A Grade 55 in Combined Science and a Grade 4 in English and Maths will be required for entry onto this course.



Progression Post-18

The qualification may be complemented with other BTEC Nationals or A Levels to support progression to higher education courses in forensics and criminology.

Eg. with an A Level in Chemistry, learners can progress to forensic science degree courses, with an A Level in Psychology, learners can progress to psychology courses and with an A Level in Criminology, learners can progress to criminology courses.

The general science nature of the course will be good for any science lab based degree, apprenticeship or job.

French & Spanish - A Level

Contact Person: Miss J Cahill

Course Outline:

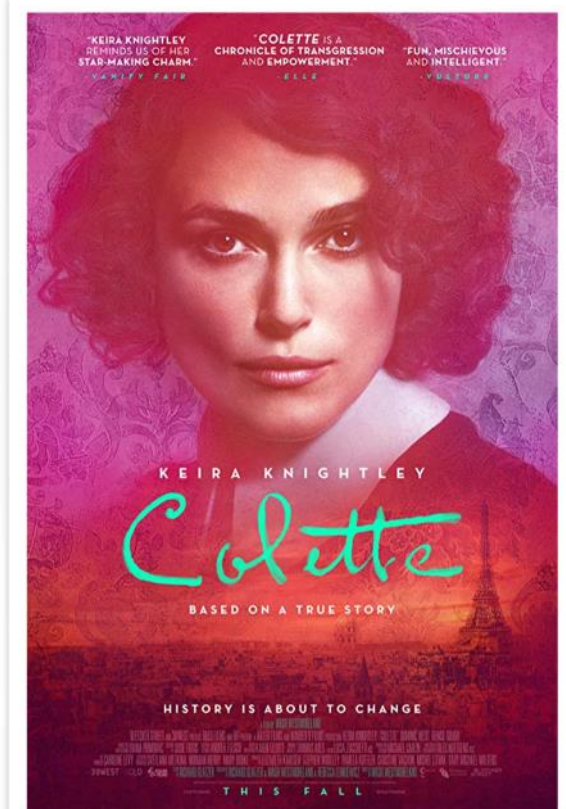
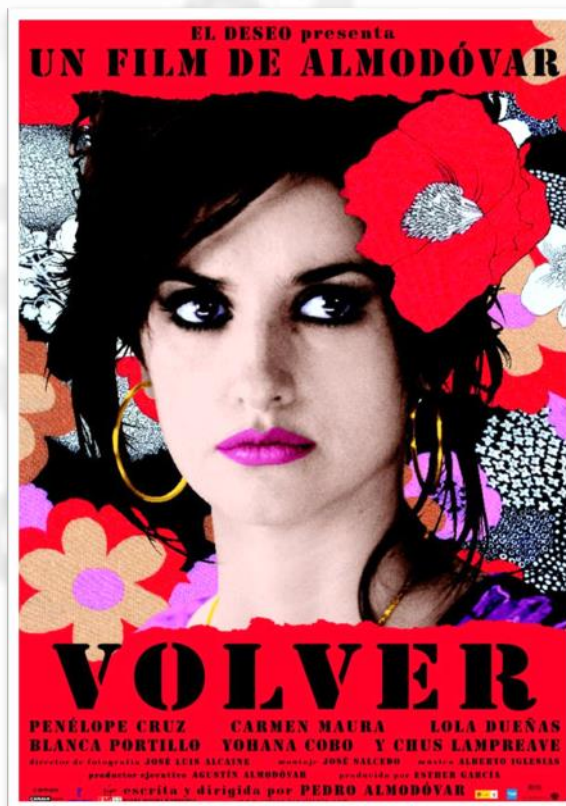
Linguists are in demand. Language GCSEs enable you to function at a social level in a foreign country; A Levels provide you with the skills needed to operate at a much higher level. Studying a foreign language at A Level will broaden your horizons, make you aware of current affairs and popular culture here and abroad, give you the ability to debate and argue your point, and communicate effectively using a high degree of spoken and written language.

You must have a commitment to speaking the language in class, as much of the work is done in pairs or groups producing dialogues, debates, group presentations and dramatisations, based around a wide range of current and topical themes. A careful study will be made of the grammar of the language to enable effective communication in all these areas.

The A Level builds on the knowledge, understanding and skills gained at GCSE and develops the spontaneous use of your language skills. It constitutes an integrated study with a focus on language, culture and society. It fosters a range of transferable skills including communication, critical thinking, research skills and creativity, which are valuable to the individual and society.

The approach is a focus on how the target language-speaking society has been shaped socially and culturally and how it continues to change. In the first year aspects of the social context are studied, together with aspects of the artistic life of the target language-speaking countries. In the second year, further aspects of the social background are covered, alongside the political landscape, both in relation to the country itself and its place in Europe. The past and its role in shaping the present is viewed through historical events and their consequences while the focus on young people and politics looks forward to shaping the future.

You will be using authentic spoken and written sources in the target language. Furthermore you will study a choice of works such as films, literacy texts, novels and poems. Learning a language at A-level is not only a good qualification on your CV but a gift for life as it enables you to become fluent in a second language and therefore opens up many doors and opportunities for your future.



French & Spanish - A Level continued

Course Outline (cont):

The Exam is divided into three parts:

Part 1: Listening, Reading, Writing (50%) In this paper, all the topics you have studied over the course are assessed via reading and listening as well as translation tasks. Your ability to apply grammar studies is also very important. Where possible authentic material is being incorporated into this paper.

Part 2: Writing (20%). In this paper you will be writing about one text and one film (or two texts). Your ability to engage with the material as well as the application of grammar will be assessed.

Part 3: Speaking (30%). During the exam you will be talking about an individual research project as well as about one of four sub themes studied during the course (based on the stimulus card).

Skills/Aptitudes Developed/Required:

- You must be prepared to talk in the language every lesson.
- You must develop and express your opinions on the topics studied.
- You must have a lively interest in the people, life and culture of the relevant country or countries.
- You must have a commitment to keeping abreast of current affairs at home and abroad.
- You must have a desire to make progress in your chosen language through independent study and participation in class.
- You must be prepared to develop and express opinions.
- You must have a willingness to read in the language, attend lectures, plays and films and, if possible, travel abroad to practise your language.

A minimum of a Grade 5 at GCSE Higher Level.

Additional Considerations:

Students will be asked to purchase a text book as well as the novel, which the class will be studying during the course. We furthermore advise to purchase a grammar and translation workbook.

Progression Post-18

A modern foreign language is a good subject choice for many students and combines well with a wide range of subjects, i.e. another foreign language, English, Humanities, Business Studies, Computing, Maths and Science. The new examination syllabuses cater for the needs and interests of a wide variety of students, and universities and colleges offer many degree courses combining a modern foreign language with another discipline.

Our links with the European Community are developing constantly and the ability to speak a foreign language is becoming increasingly important. There is great demand for personnel with foreign language skills: international organisations such as the EU or the UN, international banking, import/export trade, airlines and the tourist industry; also, journalism, public relations, secretarial, translating, interpreting, communication technology, publishing and teaching.



Geography - A Level

Contact Person: Mrs K Thompson

Course Outline:

In this Geography A Level course, you will study a wide range of geographical concepts.

Unit 1: 30%

- Tectonic Process and Hazards
- Landscape Systems and Processes, with a focus on coastal landscapes.
- Water cycle and water insecurity
- Carbon cycle and energy security
- Climate change futures

Unit 2: 30%

- Globalisation
- Shaping Places, with a focus on regeneration of rural and urban areas.
- Superpowers
- Health, Human Rights and Intervention

Unit 3: 20%

- Synoptic paper which links together the learning from unit 1 and 2 based around an issue chosen by the exam board.

Unit 4: 20%

- Coursework based on field work from a 4 day residential trip to Slapton, South Devon .

Skills/Aptitudes Developed/Required:

In order to start the A Level course you should have achieved a Grade 5 at GCSE in Geography. However, it might be possible to start the course even if you have not studied Geography at GCSE. Please ask advice from Geography teachers. Several topics covered in the course are developments of work covered at GCSE, but others are new. What is important is that you should have a lively and enquiring mind, an interest in the environment and current affairs, a willingness to explore new ideas and an ability to communicate your ideas effectively.

Those of you who have studied GCSE Geography will find that the knowledge, understanding and the skills you have learned will prove a valuable foundation for study at this level.

Additional Considerations:

Field work will be carried out during the course. This involves a residential trip away at a cost per student.



Progression Post-18

Geography is widely recognised as a subject that offers skills that can be adapted to any job. The decision making skills are valuable in our ever changing world.

Health & Social Care

BTEC Level 3 National Extended Certificate

Contact Person: Mrs N Macleod

Course Outline:

This Health and Social Care Level 3 BTEC course is equivalent to one A-Level and is awarded the same UCAS points as one A-Level, recognised by all universities. You must achieve a pass grade or above in all units and will be awarded at pass, merit or distinction level.

Year 12:

Unit 1 – Human Lifespan Development

This is an externally examined unit which examines the physical, intellectual, emotional and social development across the human life span and the factors affecting development. This content will serve as an introduction to health and social care needs and so will sit at the heart of the qualification.

You will sit the paper in January. It is a 1 hour 30 minute written paper and comprises 25% of the overall BTEC grade.

Unit 5 – Meeting Individual Care Needs

You will focus on the principles and practicalities that underpin meeting individual's care and support needs, which are the foundation of all care disciplines. You will be issued with four task assignments which will be completed in controlled conditions. They will relate to case studies, and you will need to investigate, carry out research and apply your knowledge and learning to a range of tasks that simulate activities and job roles in the health and social care field.

This unit is internally assessed in May and comprises 25% of the overall BTEC grade.

Year 13:

Unit 2 – Working in Health and Social Care

This is an externally examined unit which explores what it is like to work in the health and social care sector, including the roles and responsibilities of workers and organisations. These include maintaining the safety of and safeguarding individuals with health and social care needs, making sure that you properly handle their personal information and preventing discrimination towards them.

You will sit this paper in January. It is a 1 hour 30 minute written paper and comprises 33% of the overall BTEC grade.

Unit 14 – Physiological Disorders and their Care

You will focus on the nature of physiological disorders and how to provide appropriate treatment and care, including the role of different professionals involved in providing treatment and care for service users. You will be issued with four task assignments which will be completed in controlled conditions. You will be provided with case studies and you will need to investigate, carry out research and apply your knowledge of physiological disorders and their treatments to carry out a range of tasks which occur in the health and social care sector.

This unit is internally assessed in May and comprises 17% of the overall BTEC grade.

Entry Requirements:

5 GCSEs at Grade 4 or above, including English Language.

Progression Post-18

This qualification is designed to support progression to higher education. Areas to consider -any degree in health professions, nursing (adult, children, mental health), special needs, midwifery, physiotherapy, occupational health, etc. health visitor, teaching (all age groups), police force, social work, prison officer...



Health & Social Care

BTEC Level 3 National Extended Diploma

Contact Person: Mrs N Macleod

Course Outline

This qualification is particularly relevant if you are looking to progress to a career in the health and social care sector. It will prepare you for employment directly after achieving this qualification, via an apprenticeship, or progressing to higher education courses. Both internally and externally assessed units have an applied aspect demanding authentic work-related learning, which require you to consider case studies and a range of scenarios from various health and social care settings.

The qualification will develop your knowledge and practical skills in a range of health and social care sectors. You will study, human lifespan development; working in health and social care; how to meet individual needs and study a range of physiological disorders. In addition, you will learn how to care for individuals with dementia, gain a greater understanding of mental health wellbeing, public health and study a range of psychological perspectives. You will also study a range of science based units, including scientific techniques and microbiology.

To develop a better understanding of the demands of the sector and to gain skills to demonstrate your commitment and interest in the sector when applying to further study, you'll take part in our Health and Social Care Enrichment Programme. As part of the course, you will be expected to take part in a minimum of 100 hours of work experience placements and will use these experiences to enrich your learning, develop your skills and build upon your knowledge. You will gain opportunities to put the skills and knowledge that you learn to practical use in a variety of different settings.

Assessment:

There are 4 externally assessed units; 3 exams and 1 task in response to a research article set by BTEC, to be completed under supervised conditions.

There are 4 further mandatory internally assessed units involving a variety of tasks and assignments.

You will study 5 further internally assessed units from a range of health and social care topics.

Other Considerations:

This Health and Social Care Level 3 BTEC course is equivalent to three A-Levels and is awarded the same UCAS points as three A-Levels, and is recognised by universities in your progression to higher education or an apprenticeship. You must achieve a pass grade or above in all units and will be awarded at pass, merit or distinction level.

The course is designed to be studied solely and not necessarily alongside any other A-Level/BTEC qualification.

We deliver the health studies option in the Extended Diploma, which supports you in applying for degree/apprenticeship programmes which require Science modules, and therefore ensures that you have the widest opportunities available to you for higher education.

Entry Requirements:

5 GCSEs at Grade 4 or above, including English Language and Science.

Progression Post-18

It can lead to careers in Nursing, Social Work, Health Visitor, Dietician/Nutritionist, Paramedic, Midwifery, Primary Education, Early Years Education, Teaching Assistant.

The course is recognised by Universities for courses such as: BSc Nursing, BSc Social Work, BSc Physiotherapy, BSc Occupational Therapy, BSc Speech Therapy, BSc Health and Social Care, BSc Midwifery, BSc Radiography, BSc Paramedic Science

The course may lead to apprenticeships, such as: Early Years Provision, Care Worker, Teaching Assistant, Health Care Support Worker.

History - A Level

Contact Persons: Mrs L Ginnis & Mrs K Nicholson

Course Outline:

Year 12

Nationalism, dictatorship and democracy in twentieth-century Europe

Paper 1: Germany and West Germany, 1918–89

Paper 2: Spain, 1930–78: republicanism, Francoism and the re-establishment of democracy

Year 13:

Paper 3: Lancastrians, Yorkists and Henry VII, 1399 - 1509

Unit 3: Independent enquiry on a topic of your choice (Coursework unit)

Skills/Aptitudes Developed/Required:

A Level History is a challenging course which builds upon the skills you have gained at GCSE. The course is recommended for those of you who have a fascination with the past which has shaped us and wish to understand the diverse issues of the world you live in. The present is only fully understandable through a study of the past. The focus is on detailed knowledge of events, interpretations of the past and analysis of contemporary sources. Good results will only come from reading a range of historians and texts.

To study History A Level you will need 5s in GCSE History and English. We will expect highly motivated students who have a proven record of good conduct in their GCSE classes. All must have demonstrated organisation and reliability in their GCSE studies.



Progression Post-18

A Level History has much to offer and fits in with a wide range of other A Level courses (Sciences, Geography, English, Sociology, Technology), and is regarded by colleges, universities and employers as evidence of a student's ability to handle information, to think and to express her or himself clearly.

Many of our students go on to study either History itself, or Law, Politics, Philosophy, Psychology and Education (or combinations of these subjects) at colleges and universities.

History is particularly relevant for careers in journalism, law, broadcasting, government and administration in all its aspects. Any career that demands independent thinking and an ability to see all sides of the issue will benefit from A Level History skills.



Qualification: A Level **Coursework:** 20% **Examination:** 80%

Examination Board: Edexcel

ICT Cambridge Technical Level 3

Contact Person: Dr N Jessop

Course Outline:

5 units - 3 mandatory (Units 1, 2 and 3) + 2 Choice units (both of which are coursework)

Mandatory Units:

Unit 1: Fundamentals of IT (Externally Examined)

In this unit you will gain a sound understanding of IT technologies and practices that are essential for IT professionals. The unit includes the fundamentals of hardware, networks, software, the ethical use of computers and how business uses IT.

Unit 2: Global Information (Externally Examined)

In this unit you will develop a greater understanding of how organisations use information sources both internally and externally and the types of information you will encounter. The skills gained by completing this unit will give you knowledge of the functionality of information and how data is stored and processed by organisations.

Unit 3: Cyber Security (Externally Examined)

This unit has been designed to enable you to gain knowledge and understanding of the range of threats, vulnerabilities and risks that impact on both individuals and organisations. You will learn about the solutions that can be used to prevent or deal with cyber security incidents resulting from these challenges.

Skills/Aptitudes Developed/Required:

Excellent time management to meet deadlines.
Keen interest and enjoyment of ICT and its ever changing role in society. 5 GCSEs at 4 and above, including English Language.

Additional Considerations:

Logical thought, organisational skills and the ability to problem solve will be an advantage. You do not have to have studied Information Technologies at Key Stage 4.

Progression Post-18

Students will study the concepts associated with the use of ICT in the 21st Century. They will also have opportunities for acquiring skills needed in the IT profession, such as co-operative working and project management. These practical skills can be developed in areas of ICT that are of interest to them. Students can also use these newly acquired skills as a springboard into other higher qualifications and for working environments.



Maths - A Level

Contact Person: Mrs R Coates

Course Outline

Year 12

Pure Mathematics - Proof, Algebra & Functions, Co-ordinate Geometry Sequences & Series, Trigonometry, Exponentials & Logarithms, Differentiation & Integration, Vectors
Statistics - Statistical Sampling, Data Presentation & Interpretation, Probability, Statistical Distributions, Statistical Hypothesis Testing
Mechanics - Quantities and Units, Kinematics, Forces and Newton's Laws.

Year 13

Pure Mathematics - development and extension of Year 12 topics
Statistics - development and extension of Year 12 topics
Mechanics - development and extension of Year 12 topics

Skills/Aptitudes Developed/Required:

You must be a good mathematician, with Grade 7 or above at GCSE level. If you are in set one in Year 11 it is likely that this course will suit you.

Algebraic fluency is a priority, as are strong organisational and time management skills. Most importantly you must enjoy maths!

Additional Considerations:

You may be considered for this course if you have a really high Grade 6 at GCSE level and your algebraic manipulation is strong. All students will have to complete a pack of work over the summer and will be given a short test in one of your first lessons in September. This is to ensure that you start the course with a strong foundation and therefore go on to be successful.

Progression Post-18

Maths is essential for many degree courses besides a Mathematics degree and is desirable for many more. These include Chemistry, Physics, Biology, Computer Science, Technology, Engineering, Geography, Economics, and Psychology.

Maths also supports many other courses and careers, for example accountancy, actuarial work, banking, computing, MORSE and management.

Whatever employment or further education is pursued, Maths AS/A2 is highly respected and research suggests that people with A-level Mathematics may earn up to a third more per annum than those who don't have it!



Further Maths

AS + A Level

Contact Person: Mrs R Coates

Course Outline:

Year 12

Further Pure Mathematics - Proof, Complex Numbers, Matrices, Further Algebra & Functions, Further Calculus, Further Vectors
Decision Mathematics - Algorithms & Graph Theory, Algorithms on Graphs, Critical Path Analysis, Linear Programming
Further Mechanics - Momentum & Impulse; Work, Energy & Power; Elastic Collisions in 1D

Year 13

Further Pure Mathematics - development and extension of Year 12 topics, plus Polar Coordinates, Hyperbolic Functions and Differential Equations.
Decision Mathematics - development and extension of Year 12 topics
Further Mechanics—development and extension of Y12 topics, plus elastic strings and springs

Skills/Aptitudes Developed/Required:

You must be a very good mathematician, with a high Grade 7 or above at GCSE level. Algebraic fluency is a priority, as are strong organisational and time management skills. You must also be studying Maths.

Additional Considerations:

This is a highly respected course that compliments A Level Maths perfectly. There is a misconception that Further Maths is harder than A Level Maths but generally this is not the case particularly at AS level; the units studied have different content and explore different areas of mathematics. You do not need to be a mathematical genius to succeed in this course; you just need to be interested in mathematics and enjoy a challenge!

Progression Post-18

Maths is essential for many degree courses besides a Mathematics degree and is desirable for many more. These include Chemistry, Physics, Biology, Computer Science, Engineering, Geography, and Economics. Further Maths particularly supports future studies in Maths, Science, Technology and Engineering.

Maths also supports many other courses and careers, for example accountancy, actuarial work, banking, computing, MORSE, and management.

Whatever employment or further education is pursued, Maths A Level is highly respected and Further Maths AS/A Level will open many doors.

Media Studies - A Level

Contact Person: Miss G Britton

Course Outline:

A Level Media Studies engages you in the academic in-depth study of media products in relation to four key areas: Media Language, Media Representations, Media Industries, Media Audiences.

You will study the following media forms:

Television, Film, Radio, Newspapers, Magazines, Advertising and marketing online, Social and participatory media, Video games, Music videos.

You will also explore these media forms in their cultural, social, historical, economic and political context; exploring why these products are the way that they are and what messages they give us about the world.

Assessment:

Paper 1 - Questions will focus on advertising and marketing, music video, radio, newspapers and film.

Paper 2 – Questions will focus on magazines, online, social and participatory media and video games.

Both exams are 2 hours and are each worth 35% of the A Level grade. There is a variety of question types and length. You will answer questions about unseen texts as well as a wide variety of media products set by the exam board that we will study in advance of the exam.

Non-Exam Assessment: Choice of 6, annually changing briefs set by the exam board. You will create a cross-media production (more than one media product, e.g. a film trailer and website) for an intended audience.

Skills/Aptitudes Developed/Required:

You will need to be interested and excited by the media. You will enjoy debate and discussion about theories and ideas related to the media. You will develop analytical and research skills. You will need practical media skills or a willingness to develop them.

Additional Considerations:

Grade 5 in English GCSE. You must also complete the holiday task set in Induction Week. You do not need to have done GCSE Media Studies. You do not need to own any specialist equipment. You do not need to be an ICT/technical wizard to take this course.



Progression Post-18

About 1 in 8 UK businesses is in the creative industries – advertising, social media, film and TV, video games etc

- Every company has some form of media presence – social media, website, advertising and marketing, etc
- The media industry generates £13.2 MILLION every hour
- There are over 2.1 million jobs in this sector and the industry is growing at a far higher rate than other traditional industries

Career progression paths can vary from continuing to study Media Studies at Degree level to Advanced Apprenticeships inside the industry. Previous students have gone onto study a range of degree courses including film, media, graphic design and event management. We even have one previous student who now works in the independent video game industry!

Philosophy, Ethics and Religion - A Level

Contact Person: Mr I Jones

Course Outline:

The A Level in Religious Studies is an engaging, interesting and thought provoking study of the three main components of religion.

Component 1: Philosophy of Religion

You will study ancient philosophical influences:

- The nature of the soul, mind and body
- Arguments about the existence or non-existence of God (Theism v Atheism v Agnosticism)
- Is religious experience real or just wishful thinking
- How does religious experience affect people's individual actions
- Issues in religious language

Component 2: Religion and Ethics

You will study:

- Different theories about *how* humans should make moral and ethical choices
- Opportunity will be given to apply ethical theory to two contemporary issues such as Abortion, War, Capital Punishment etc
- Consideration of whether or not we have a conscience

Component 3: Developments in Religious Thoughts

You will study how **one** of the following religions have developed over the centuries:

- Christianity
- Islam
- Judaism
- Buddhism
- Hinduism

Skills & Aptitudes Developed:

This course, offered by OCR, is unique as it combines the best of traditional A Level Religious Education with the best of the 'stand alone' Philosophy A Level. Students interested in both religious belief and human philosophy will, in studying this subject, get the best of both. This is a course for those interested in human beliefs and would like to consider in more depth the 'big' questions in life.

Questions such as; Do I have a soul? Does God exist? How do theists square the problem of evil? Do I exist in soul, mind and body? In addition you will become experts in how religious thinking has developed and how it still has a significant impact on how people think and act today.

Entry Requirements:

Ideally students will have achieved a broad range of GCSE at Grade 5 and above including, English Language.

Progression Post-18

Universities and employers consider Religious Studies as a subject that develops high level thinking skills, equipping students with analytical and critical ability. Religious Studies is a rigorous academic course that requires students to think philosophically, use skills similar those required in the study of history and do empathise with others who may have different religious beliefs from their own.



Photography - A Level

Contact Person: Ms R Davies

Course Outline:

This course will introduce you to photographic techniques and thinking, enabling you to explore a range of potential outcomes. You will learn camera control (digital and traditional), Photoshop techniques, and traditional darkroom skills to print images. You will be expected to plan, resource and develop projects in an increasingly independent manner, with the aim of communicating your creative ideas in the photographic form of your choice.

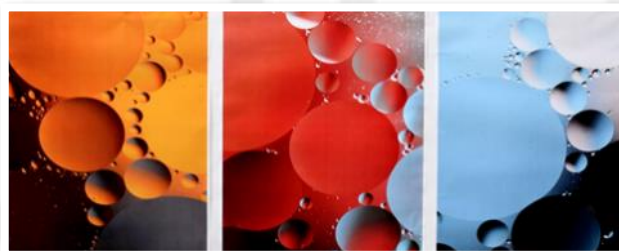
There are two units of work to complete each year. In Year 13 these are 'Component 1: Personal Investigation' and Component 2: Externally Set Assignment'. During the Personal Investigation you are required to conduct a practical investigation into an idea, issue, concept or theme, supported by written material (between 1000-3000 words). The Externally Set Assignment is published by AQA in February of each year, and following a preparatory period of work you will undergo a 15 hour (3 day) supervised exam, during which you will culminate your investigation.

Skills/Aptitudes Developed/Required:

A high level of commitment is needed, as you will be expected to work independently. You will have to take many photographs in your own time, and not just during lessons. Workbooks/ journals and personal research are essential, and form an important part of your assessment. Entry requirements are a Grade 4 in Photography GCSE. Grade 4 in Fine Art will also be considered if evidence of an active interest in Photography can be shown.

Additional Considerations:

We expect Photography students to make regular visits to local photographic exhibitions, to read reviews, and to keep up to date with contemporary creative thinking.



Progression Post-18

Foundation Course Diploma in Media Arts (diagnostic courses designed to help students to target a specialist area for study within the Arts). Degree Level Course in Photography, Art, Design and Graphics.

Careers in any number of creative industries: galleries, education, design, media, advertising.

Physical Education - A Level

Contact Person: Miss J Wild

Course Outline:

A Level PE aims to provide you with a global understanding of sport and exercise combining scientific, psychological, social and practical concepts. The course will:

- enable you to know about, understand and analyse the major concepts and principles underlying physical education and sport;
- develop an understanding of the historical, physical, social, cultural and psychological factors which influence sport and physical education; and
- encourage the understanding of theoretical principles through practical examples.

Assessment

The theory content comprises of 70% of the total marks. This examines the physiological, psychological and social cultural concepts. The remaining 30% is assessed through practical performance (15%) and the ability to analyse and evaluate performance (15%). This can be completed in a written or interview format. You will be required to demonstrate your practical and theoretical application as a performer or a coach. (Please refer to specification for sporting categories recognised by AQA.)

Skills/Aptitudes Developed/Required:

You are expected to achieve a Grade 5 in GCSE PE/Sports Studies or Distinction in OCR Level 2, 55 in Combined Science, and Grade 5 in English Language and Maths. You must be ICT literate and are required to be participating in sport regularly to at least club standard. Excellent time management skills and the ability to manage your own time and meet deadlines are key to being successful in the practical element

Additional Considerations:

Students who have not studied Sport at KS4 will be considered on a case by case basis, and will need to meet all other criteria identified above. Coaching and leadership courses will be available throughout the year at varying costs (optional).



Progression Post-18

Previous candidates have progressed to higher education studying courses ranging from recreation management, exercise science, sports psychology and physiotherapy. Career prospects are continually expanding within a growing industry and include occupations such as leisure management, sports therapy, teaching, coaching, exercise consultancy and health promotion.



Physics - A Level

Contact Person: Mr T Smith

Course Outline:

Physics, also known as 'Natural Philosophy', is the study of nature and the universe in the broadest sense. It is at the heart of everything, and is a highly rewarding discipline to study. Physics is the foundation of technology, and has influenced the whole of our culture. This AQA specification has been developed in consultation with leading universities to provide students with the essential skills and knowledge required for degree level study, whilst incorporating interesting contemporary applications of Physics. Practical work is at the heart of the course, and the final option module allows students to focus on the topics that really engage them.

The course is taught through a mixture of teacher led sessions, practical problem solving, research and IT work, all designed to promote curiosity and develop independent study skills.

Candidates of this course are offered the exciting opportunity to take a trip to the Large Hadron Collider, CERN, Geneva (fees apply) which runs biennially.

Year 12

- Students are introduced to Advanced Level Physics through a topic focussed on Measurements and Errors
- Students study 4 core modules across the year, including Particles and Radiation, Waves, Mechanics and Materials, and Electricity.
- Practical skills are developed through a series of activities which will be assessed in the exams

Year 13

- A further 4 core modules are studied including Further Mechanics, Thermal Physics, Fields and their Consequences, and Nuclear Physics
- Students have an opportunity to choose an option from Astrophysics, Medical Physics, Engineering Physics and Turning Points in Physics
- An additional series of student led practical activities consolidates and enhances student critical thinking and problem solving.

Assessment - The course is fully assessed through final 3 exams in the summer term, each 2 hours.

- Paper 1 – Topics 1-5 + Practical skills – 34%
- Paper 2 – Topics 6-8 + Practical skills – 34%
- Paper 3 – Practical skill + Option topic – 32%

Examinations consist of short and long written answer questions, extended calculations, multiple choice, and questions focusing on practical skills and analysis.

Successful completion of a practical work lab-book to an acceptable standard rewards students with a 'Practical Endorsement'. Whilst this does not contribute to the overall mark, it is essential for many practical science and engineering university courses.

Skills/Aptitudes Developed/Required:

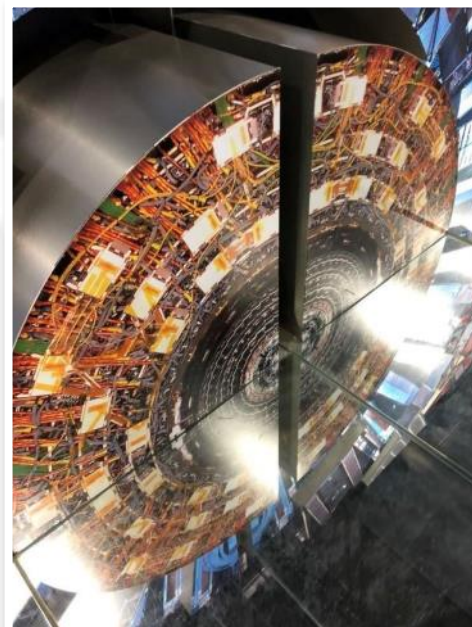
- Assessing the validity, reliability and credibility of scientific information
- Using safe and skilful practical techniques and processes
- Making and recording reliable measurements with appropriate accuracy and precision
- Communicating scientific understanding through report writing and presentations
- Solving problems through methodical and logical application of mathematics

Entry Requirements

Grade 6 or above in GCSE Science or Physics and Grade 6 or above in GCSE Mathematics. Those who are not entering for three separate sciences may wish to seek advice from their teachers regarding their readiness for the demands of the A-Level course.

Progression Post-18

Previous A Level Physics students have gone on to study a range of scientific and non-scientific courses at university. These include: mathematics, aerospace engineering, music, astrophysics, electrical and mechanical engineering, audio technology and engineering



Politics - A Level

Contact Person: Mr I Jones

Course Outline:

The A Level Politics encourages you to:

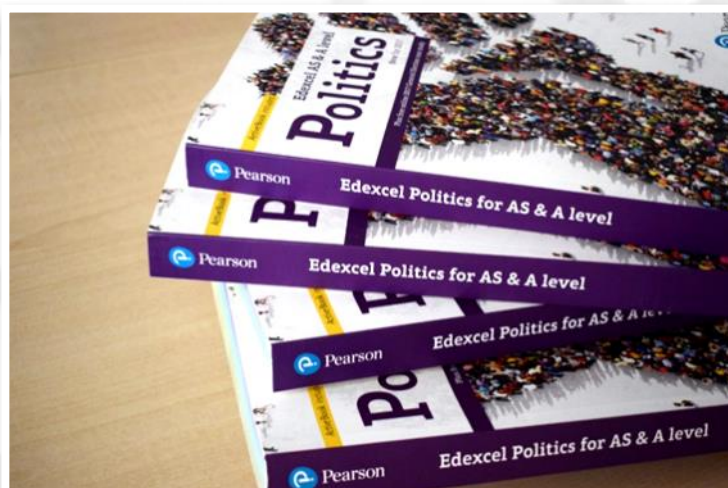
- Examine the structures of power and authority in the UK and in global politics
- Enjoy researching and discussing current affairs
- Develop a broad knowledge and understanding of the political system of the UK, including local government and the UK's relationship to the European Union

Year 12 (50% A Level) Mock Exam paper of 2 hours

1. Political Parties
2. Pressure Groups
3. Elections
4. Voting Behaviour
5. Constitution
6. Parliament
7. Prime Minister
8. European Union

Year 13 (50% of A Level) 3 Exam Papers at 2 hours each

1. Theory of power and human nature
2. Globalisation and nations
3. Human rights
4. The environment
5. The European Union



Skills/Aptitudes Developed/Required:

The course encourages you to develop your capacity for critical thinking, to see relationships between different aspects of government and politics and to perceive your field of study in a broader perspective (including some comparisons with other political systems). Finally you will develop your knowledge and understanding of relevant political concepts and processes.

Additional Considerations:

You will be given the opportunity to visit important political institutions like the Houses of Parliament, Whitehall and the Supreme Court in London in order to gain a thorough understanding and first-hand experience about how power is exercised in the United Kingdom.

Entry Requirements:

Ideally students will have achieved a broad range of GCSE at Grade 5 and above including, English Language.

Progression Post-18

A Level Politics provides an excellent academic and skill base for a wide range of university courses and careers. The various skills required by the specification provide opportunities for progression directly into employment but equally contribute to students' lifelong learning.

Government and Politics students have gone into a range of areas including law, journalism, the civil service and the police force.

Psychology - A Level

Contact Person: Mrs C Hastings

Course Outline:

Year 12 Psychology follows a broad syllabus to introduce you to the subject. This includes the study of Cognitive Psychology (memory), Developmental Psychology (early social development of children), Social Psychology (conformity and obedience), Individual Differences (abnormality), Psychological Approaches and research methods.

Year 13 Psychology : This builds upon the knowledge base of AS (studied by all students in Year 12) when a choice of topics can be studied (e.g. biological rhythms and sleep, relationships and aggression). This includes the further study of mental disorder and research methods with an exciting new section of Psychology in Action (including the study of Schizophrenia).

Skills/Aptitudes Developed/Required:

Writing - You will need to be able to analyse a wide variety of materials including written texts, research studies and articles. You also need to be able to write in a fluent and concise style, therefore it is required to have Grade 5+ in both English subjects.

Science/Maths – To study for the two year A Level, you must be competent at Science and Mathematics. Therefore you are required to have a Grade 5 in Science or a Grade 5 in Biology. You will need at least a Grade 4 in Maths to cope with the mathematical component of the exam, and a Grade 5 in English Language.

Good Communication Skills - to express yourself verbally and in writing.

Additional Considerations:

You should be interested in understanding peoples' behaviour and also the scientific enquiry of such.



Progression Post-18

Higher Education degree in Psychology, related medical and social science programmes, business studies, teaching, media, sports psychology/science, BTEC Higher National Certificate/Diploma in Counselling/Health and Care.

Direct employment such as in caring professions, occupational and media sectors. Progression on to next level of vocational qualifications, especially into care, sports, management and media sectors.



Sport and Physical Activity

OCR Cambridge Technical Level 3 Extended Certificate

Contact Person: Miss J Wild

Course Outline:

OCR Sport and Physical Activity aims to provide you with a global understanding of sport and exercise combining scientific, psychological, social and practical concepts.

This course will:

- Enable you to know about, understand and analyse the major concepts and principles underlying physical education and sport;
- Develop an understanding of the historical, physical, social, cultural and organisational structure of sport factors
- Encourage the understanding of theoretical principles through application

Assessment:

The course consists of 3 mandatory units which examine

- The anatomy and physiology of the body*
- Sports organisation and development,
- Sports coaching and leadership*

*These two units are assessed via 2 examinations. The remaining time is spent studying optional units which will be selected based on the strengths of the individual cohort and the facilities. Please refer to the specification for further information on the optional units.

Skills/Aptitudes Developed/Required:

You are expected to achieve a Grade 4 in GCSE PE/Sports Studies or Merit in OCR Level 2, 44 in Combined Science, and Grade 4 in English Language and Maths. You may be ICT literate and are required to be participating in sport regularly to at least club standard. Excellent time management skills and the ability to manage your own time and meet deadlines are key to being successful in the coursework.

Additional Considerations:

If you have not studied a sports course at Level 2 you will be considered on a case by case basis, and will need to meet all other criteria identified above. Coaching and leadership courses will be available



Progression Post 18

Candidates can progress to higher education courses ranging from recreation management, exercise science, sports psychology and outdoor and adventurous activities (degree and foundation levels). Career prospects are continually expanding within a growing industry, and include occupations such as leisure management, sports therapy, teaching, coaching, exercise consultancy and health promotion.

Sport and Physical Activity

OCR Cambridge Level 3 Technical Extended Diploma

Contact Person: Miss J Wild and Mr R Prior

Course Outline:

Students will study the following mandatory units: • Body systems and the effects of physical activity • Sports coaching and activity leadership • Sports organisation and development • Working safely in sport, exercise, health and leisure • Performance analysis in sport and exercise • Physical activity for specific groups • Nutrition and diet for sport and exercise • Sports injuries and rehabilitation • The business of sport • Improving fitness for sport and physical activity • Organisation of sports events • Working in active leisure facilities • Practical skills in sport and physical activities.

These units are related to key aspects that underpin how sport and physical activity is delivered and organised and developed as a business, such as anatomy and physiology in relation to physical performance; coaching skills; the structure of sport in the UK and the organisations involved; the target groups that would most benefit from participation in physical activity and why; and safe practice and delivery in sport and leisure.

Learners will study how different types of business in sport operate including how they measure success, why volunteers are so important to the sector and how they are recruited and managed, how sport businesses ensure sustainability and how they access different sources of funding. Learners will also study how to analyse performance using different methods and how to support people in maintaining a fitter, healthier lifestyle. In addition to this, learners will develop transferable skills that employers are looking for such as planning, communication and organisation skills.

An additional four optional units from the following: • Group exercise to music • Biomechanics and movement analysis • Health and fitness testing for sport • Sport and exercise psychology • Sport and exercise sociology. These units will support learners in developing additional skills, knowledge and understanding which will allow them to deliver a wider range of sports and physical activities and support development in those sports or activities. They will also develop learners' understanding of the sociological and psychological impacts that participation in sport and physical activity can have as well as the benefits of and barriers to participation and how to overcome these.

Assessment:

Learners will take 17 units, made up of mandatory and optional units. Four of these units will be assessed in the form of exams, the others units will be assessed through coursework.

Other Considerations:

The Extended Diploma is a Tech Level qualification (meaning it will prepare learners for employment). This means it is equivalent in size to three A-levels and awarded the same UCAS points. It will form a complete two-year study programme and is recognised by all universities in your progression to higher education or an apprenticeship. You must achieve a pass grade or above in all units and will be awarded at pass, merit or distinction level. The course is designed to be studied solely and not necessarily alongside any other A-Level or vocational qualifications.

Entry Requirements:

You are expected to achieve a Grade 4 in GCSE PE/Sports Studies or Merit in OCR Level 2, 44 in Combined Science, and Grade 4 in English Language and Maths.

Progression Post -18

It can lead to study at university/ apprenticeships/careers in personal training, instructor qualifications, coaching and leadership, sports development, sports management, sport and exercise science. It is always advisable for students to check what qualification are accepted for routes they wish to pursue in employment or higher education courses

Nailsea School Sixth Form

Mizzymead Road | Nailsea | North Somerset | BS48 2HN | www.nailseaschool.com

