



A Message from the Head

At the end of this most unusual of school years I would like to take this opportunity to thank all the students for their resilience and efforts, the staff for their dedication and hard work and parents and carers for your continued support of Nailsea School and our students.

I am very grateful for how all of our staff have responded so well to the challenges of developing online learning, often whilst juggling illness and caring for their own dependents. Families have also responded brilliantly with students going the extra mile to continue their learning and engage with us at school under difficult circumstances.

Traditionally this is a time when we have had the chance to say farewell to both staff and students who are moving on to new adventures elsewhere. This year we have been unable to do that in the usual way. However, please be assured that those students in years 11 and 13 who are moving on to pastures new have been in our thoughts and we will be looking to organise a proper goodbye when we are able to.

In addition to the students that are leaving, we are also saying goodbye to a number of colleagues who have all given service to the school. I would like to thank Mr Dempsey (English), Mr Markey and Mr Probert (Maths), Dr Hewitt (Science), Miss Johnson (Hub), Mrs Filer (Hub), Ms Savory (LSA), Ms Martinez (Cover Suite) Ms Cowdery (The Link) and Ms Day (Cleaning Staff) for all of their hard work and wish them well for the future. Finally a special mention should be given to Mrs Shoesmith who is both retiring and relocating to Yorkshire after 11 years at Nailsea. In recent times she has led Griffin House, on occasions to the House Championship! The impact Mrs Shoesmith would have had on students and families in her time at Nailsea has been tremendous and I cannot fault her dedication to the pastoral care and wellbeing of all the students in her care. I know many will miss her but I am sure you will join me in wishing her well.

Finally, I wish all of our #teamnailsea families the very best for the summer holidays. I look forward to welcoming you all back for what promises to be a slightly different but always enjoyable and productive year.

Take care and be kind

Mrs Dee Elliott
Head teacher



HOUSE CHAMPIONSHIP

Congratulations to Dragon House on winning this years House Championship. A great effort made by all Houses and some cracking results!

Well done !

| | Average points per student | House Points adjusted to 202 Students per House | House Points (Challenges & Competitions) | CURRENT TOTAL | |
|---------------|----------------------------|---|--|---------------|---|
| DRAGON HOUSE | 1109 | 224018 | 10600 | 234618 | 1 |
| GRIFFIN HOUSE | 1092 | 220584 | 10400 | 230984 | 4 |
| PHOENIX HOUSE | 1107 | 223614 | 10100 | 233714 | 2 |
| UNICORN HOUSE | 1094 | 220988 | 10100 | 231088 | 3 |



ASPIRE | BELIEVE | SUCCEED

Nailsea School Mizzymead Road Nailsea BS48 2HN

01275 852251 | nailseaschool.com | info@nailseaschool.com



Governors Update

It has certainly been an eventful year for school and governors. Discussions and meetings continued through the start of the academic year regarding Multi Academy Trusts and we are delighted that, after some detailed work into the most suitable MAT for Nailsea School, we have been given approval to consult with Wessex Learning Trust about joining them. Consultation with parents and stakeholders will continue into next year and we can assure you that this partnership will be beneficial for students, parents and staff.

The Covid-19 pandemic threw everyone into a new and unknown situation. Whilst the government were very good at keeping schools informed about what they needed to do to keep education at the forefront for our students, it is up to schools to manage the how. Governors have been kept informed and consulted at every step of the way and regular meetings with Mrs Elliott and the Leadership Team have taken place. Governors are proud of the way the school has handled the lockdown and we often hear comments from parents about excellent communication, how homework has been adapted to meet students' needs and the pastoral care offered. We would like to take this opportunity to thank everyone involved in managing this difficult situation.

OFSTED visited in March, with all that that brings. We were disappointed to be given a Requires Improvement grade and that what was good in the school was overshadowed by this. You will have received a letter outlining thoughts about this inspection and we await the outcome of an internal review. We must celebrate what is good about Nailsea School and work on those few areas that need to be improved. We have always maintained that pupils come first and that we are not an exam factory, even though our students do very well at GCSE and A Level and go on to excellent areas of work, apprenticeships and universities.

We thank you all for your continued support during these difficult times and look forward to some sort of normality in the new academic year. We will continue to balance ,challenge and support to the school in the areas outlined in the Ofsted report and the school's own evaluation of areas to work on.

Wishing you all a happy, healthy and enjoyable summer. Keep safe.

Jo Hopkinson

Chair of Governors

Virtual Reading

Although the public library buildings are closed, you can still access books, magazines, music, comics and information online and via their click and collect service.

If you are not a member of the public library, you can join the online and be issued with a temporary online membership and pin. You can use this to access a full range of online e-books, e-audio, e-magazines and e-comics. Their website also gives details how to access free popular online newspapers and magazines until October using your library membership details.

Information can be found: [HERE](#)

There are many benefits to reading and listening to someone reading, Google 'reading for 20 minutes a day'. There is plenty of research to show that students who do this outside of school tend to have improved language skills, a better understanding of the world, stronger relationships and outscore their peers on tests.

Happy holidays and happy reading!



ASPIRE | BELIEVE | SUCCEED

Nailsea School Mizzymead Road Nailsea BS48 2HN



The PTA ~~Summer~~ WINTER Fun Prize Draw

As announced in the last newsletter the PTA's annual prize draw has been postponed until December 2020 and tickets will hopefully be on sale via ParentPay in October.

If you bought a ticket at one of our events earlier in the year this will still be valid for the postponed draw.

Thank you to all the local businesses that continue to support us with prize donations



Second Hand Uniform Needed!

Calling all Year 11 Students (or anyone else who has grown!) - do you have any unwanted uniform?

We are collecting good quality second hand PE Kit and School Jumpers to re-sell, to raise funds for School. We also collect ties to pass on to the Head of House team.

To arrange a donation drop, please text or phone Karen Bidgood on 07989 924388. PLEASE DO NOT TAKE ANY UNIFORM TO SCHOOL.

Once received, items will be quarantined and washed before they are available for sale.

Rotary Charity Walks

In previous years PTA members and some students have taken part in this charity event. You can choose to support a variety of good causes, one of which is Nailsea School PTA.

This year any student participating will earn 25 House Points!!!

Message from The Rotary:

'We are determined to do our best to ensure that the event does take place in 2020. This year causes need the money as much as ever – some of them even more than ever – SO PLEASE DO SUPPORT THEM (and us!). Please register for the event on 11th October and do get sponsored and raise as much as you can (but if you do not wish to get sponsored still register – because that helps the local causes anyway). If for some reason you are unable to take part on the day of the event (or if we have to postpone again) we will still do our best to make sure that you can complete the course at a time of your own choosing.'



ASPIRE | BELIEVE | SUCCEED

Nailsea School Mizzymead Road Nailsea BS48 2HN
01275 852251 | nailseaschool.com | info@nailseaschool.com



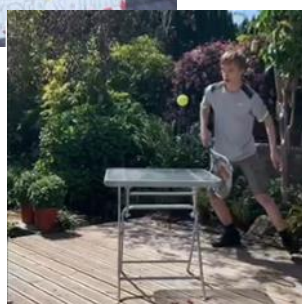
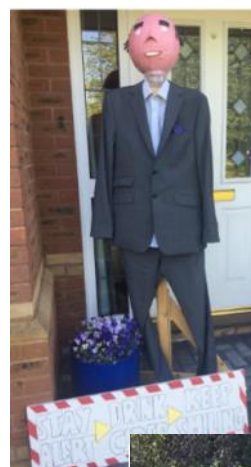
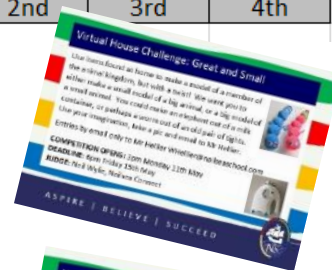
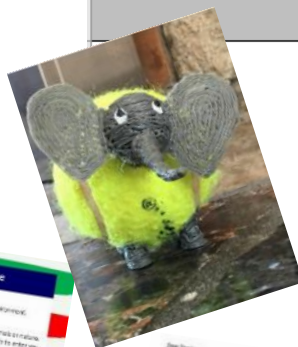
Virtual House Competitions

The abrupt end to 'normal' schooling gave us an opportunity to look at how we could keep the House Challenges going whilst the vast majority of students would not be in school.

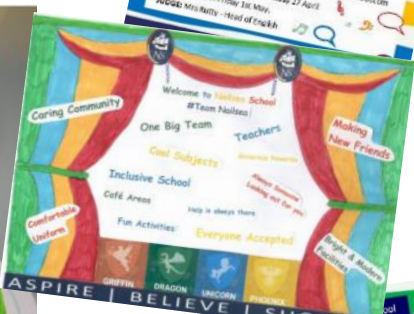
The brainchild of Mrs Elliott the Virtual House Competition was launched. Each week a different type of task, based on a variety of themes, was open to all students in Years 7-10 to try and win points for their own House. Starting with the Loo-Roll challenge and ending with the Welcome to Nailsea poster competition each weeks challenge saw an amazing response.

Guest judges were invited to score the entries to ensure fairness, and all entries were anonymous. A big thank you to all of the guest judges for their time. Please take a look at our website for a full run down of entries and weekly winners etc <https://www.nailseaschool.com/communication/house-challenges/>

| Challenge | Dragon | Phoenix | Unicorn | Griffin |
|---------------------------------|-------------|-------------|-------------|-------------|
| Loo Roll Challenge | 900 | 1000 | 800 | 700 |
| Lyrical Lockdown | 1000 | 700 | 900 | 700 |
| On The Ball | 1000 | 800 | 700 | 900 |
| Great and Small | 800 | 700 | 1000 | 900 |
| Go Scarecrow | 900 | 800 | 1000 | 700 |
| Spring into Summer | 900 | 1000 | 800 | 700 |
| Locaketon, Locaketon, Locaketon | 800 | 900 | 700 | 1000 |
| Enviro-Challenge | 900 | 1000 | 700 | 700 |
| Welcome to Nailsea School | 800 | 1000 | 900 | 700 |
| TOTALS | 8000 | 7900 | 7500 | 7000 |
| | 1st | 2nd | 3rd | 4th |



SUNSHINE GONE SUMMERS ON!
SUMMER MEANS SUN, ICE CREAM,
HOLIDAYS, LAZY DAYS, WATER FIGHTS,
HOT NIGHTS, BLUE SKIES, LOTS OF FLESH!
SUMMER MEANS BARBECUES, LUSH VIEWS,
SUNSETS AND SURFBOARDS
IT'S ALRIGHT ONCE YOU'RE IN
JUST PUT ON A BIG GRIN!



ASPIRE | BELIEVE | SUCCEED



Year 11

Dear Class of 2020

You were always going to be a special year group to me, but given the events of recent months you have now been forever immortalised in not only my memory but nationally as the group 'that never sat their exams'.



As I struggled to say to you (through sobs!) in those final days you were in school in March, in your time at Nailsea you have all grown and learnt far more than any exams would have been able to test and judge. Your levels of empathy and resilience could never have been given a grade or percentage. The way you conducted yourselves in those final few days demonstrated that and I could not have been more proud of you all.



I look forward to seeing you all again in person WHEN we get to don our prom dresses and suits and have our proper farewells.

Take care and fondest wishes as you all look to the future and follow your dreams.

D Elliott

Mrs Elliott



ASPIRE | BELIEVE | SUCCEED



Year 11



Last Day Celebrations

Unable to take part in the usual end of school leaving celebrations, and the final Friday before lockdown, Nailsea School staff rallied together to make the best of a bad situation for our Year 11s, organising the early arrival of the leavers hoodies and an afternoon of entertainment. Weston-Super-Mare based singer Harrison Lerner-Main, who found fame in ITV's The Voice came to entertain the year group singing a variety of songs including covers, his own tracks and some classic sing-along numbers. We are grateful to everyone who made it happen. Thank you #TeamNailsea

ASPIRE | BELIEVE | SUCCEED

Nailsea School Mizzymead Road Nailsea BS48 2HN

01275 852251 | nailseaschool.com | info@nailseaschool.com

**Dear Class of 2020**

This is not our final farewell, we will still organise something when circumstances allow. I promise I will not remember you as the "Covid year group" although that has been uppermost in all our minds recently. I will remember you as the year group who were so good at supporting one another. The year group whose collective sense of humour meant smiles were never far away. The year group whose kindness and resilience meant that whoever struggled, and whenever, they were looked after.

Year 13

I know the vast majority of you, if not all of you, were disappointed at losing the chance to show how well you could do in your exams. We know how good you all were, and we hope that you get the grades that you deserve. But I also want to say that in your time at Nailsea you have all grown far more than exam results will ever show. Your ability to problem solve, bounce back from setbacks, care and support for each other are all at least as important as exam results, but will never be measured.

You've been a great year group. We will all miss you, and we will look forward to see the great things you will all achieve in later life.

With best wishes and goodbye but not yet farewell.

Mr Reddiford & Miss Jones
Head and Deputy Head of Sixth Form



ASPIRE | BELIEVE | SUCCEED

Nailsea School Mizzymead Road Nailsea BS48 2HN



Wellbeing Bulletin

We endeavor to provide a safe and welcoming environment where children are respected and valued. If you have concerns that a child has been harmed, or is at risk of harm then please contact a member of the safeguarding team in person or on the following email address: safeguardingteam@nailseaschool.com

RETURNING TO SCHOOL & ANXIETY

The coronavirus outbreak has caused major disruptions to daily life and I think it's safe to say everyone is feeling these changes deeply. While the return to school will be not only welcome but exciting for many students, others will be feeling anxious or frightened about whether they will be returning to a new type of normal and what that new normal might look like. So with that here are tips to help your children navigate some of the complicated emotions they may be facing with going back to school. In addition to checking in on your child's physical health, you should also keep an eye out for signs of stress and anxiety. COVID-19 may be impacting your child's mental health, and it's important to demonstrate that it's normal and OK to feel overwhelmed at times. Many teenagers have the misunderstanding that anxiety is always a sign of mental illness when in fact, psychologists have long recognised that anxiety is a normal and healthy function that alerts us to threats and helps us take measures to protect ourselves. So it can be helpful for students if you say, "You're having the right reaction. Some anxiety right now makes sense, you're supposed to feel that way. And that anxiety is going to help you make the decisions that you need to be making right now." When in doubt, empathy and support are the way to go.

Making Return to School Easier

- 1 Ask your child what's worrying them. Focus on listening and providing emotional support, and reassure them that you can work together to make things better.
- 2 Reach out to school as early as you can to avoid things building up. Work with the pastoral team and other key staff to improve the situation.
- 3 Talk with your child about strategies that help them to express and manage their anxiety. This could be spending time with particular friends, listening to music, reading, playing sport, drawing, cooking or watching a favourite film.
- 4 Plan a regular morning routine that can be followed each day – from getting up to having breakfast, getting dressed, leaving the house and arriving at school. This will help to create a sense of security.

ASPIRE | BELIEVE | SUCCEED

Nailsea School Mizzymeade Road Nailsea BS48 2HN
01275 852251 | nailseaschool.com | info@nailseaschool.com



Hands-On Learning Opportunity

Hub student Freddie took part in some very special work experience during this term as he went with his father to the yard where he was able to look and work on lorries.

Freddie got hands on and worked on the lorries, he wired in 4 new cables to fit a sensor on and fixed the sensor control box then he connected the correct cables to the right fitting on the sensor control box. He then replaced 2 damaged rear lights that needed rewiring to connect the new ones to the old connection, this involved stripping cables, connecting the correct wires to the right feed from the lorry. Freddie's knowledge of wiring back to the source correctly was exceptional.



Freddie then repaired a bent mud guard arm which involved removing light units, mud guards and flaps and various other things, he fitted a new part to the exhaust, this involved claps and seals. He knew all the correct sized spanners, sockets, screwdriver size he needed and what connectors to use and most of all how to do it. This is a great achievement Freddie and you should be very proud of your independent learning and work experience.

Chicken Shed—Rebuild

Year 9 student Sawyer H has spent a couple of days during term 6 gaining some valuable work experience alongside his father. His Mum works as a gardener at Lower Failand Organic Farm, where they needed an old wooden chicken shed demolished and a new one built. So Sawyer took the opportunity to work with his Dad and other team members to develop his skills. Together the duo built a new chicken shed plank by plank from scratch – no mean feat given the soaring temperature, that we experienced earlier in the term.

He spent long days on the 'tools' and was an integral part of the team, getting his head down and the job done. Now the new chicks have moved into their new home! His mother said it was

'brilliant for him to see how skills he is learning at school apply in everyday life... maths, engineering, carpentry... to name a few'.

Great work Sawyer – we hope that chicks enjoy their new home!



ASPIRE | BELIEVE | SUCCEED

Nailsea School Mizzymeard Road Nailsea BS48 2HN

01275 852251 | nailseaschool.com | info@nailseaschool.com



Visit Our Virtual Museum

Last term, one of Year 8's tasks for History was to create a virtual museum.

Students uploaded pictures of an interesting old object that they had at home or something that they had seen when walking around their local area. They then added an explanation of what the object was and how it came to be in their family.

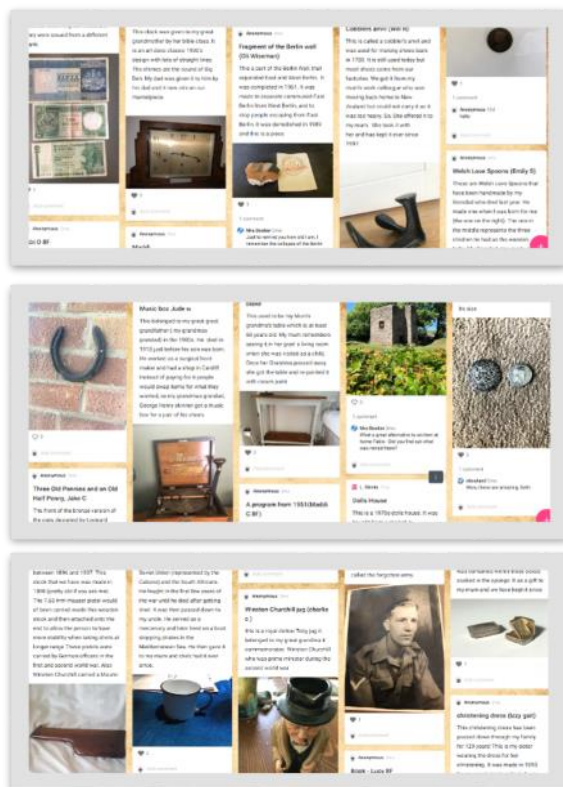
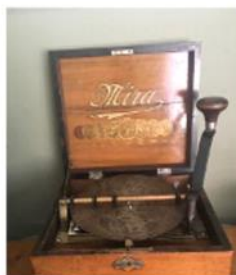
We had so many interesting artefacts added to our museum including war medals (including a Victoria Cross!), old coins, special family toys, an original suffragette rosette, an old music box (and a musical bottle!) and many other fascinating things.

To visit our museum and see more of the objects click here: <https://padlet.com/rdownland/j3793ezj9m7dk3h2>

Well done to all of our Year 8 Historians for creating such a fantastic museum!

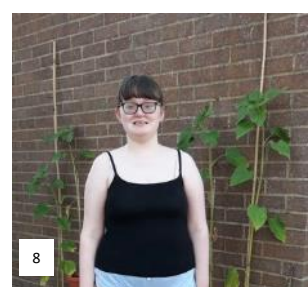
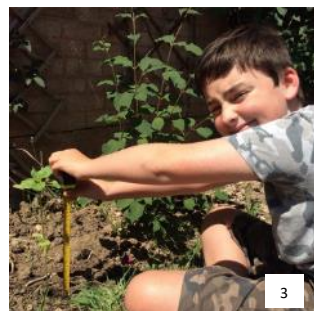
Music box Jude w

This belonged to my great great grandfather (my grandmas grandad) in the 1900s. He died in 1910 just before his son was born. He worked as a surgical boot maker and had a shop in Cardiff. Instead of paying for it people would swap items for what they wanted, so my grandmas grandad, George Henry skinner got a music box for a pair of his shoes.



Hub—Sunflowers Project

The Hub students have been doing some fantastic work growing sunflowers from seeds. Here are a few pictures of what has been grown so far.



1. Chloe has moved her sunflowers into a planter. They have all grown strong & tall.
2. Ava has been looking after her flowers – even in the rain!
3. Jack planted his flowers out into the garden, and he has been measuring them every week.
4. Aeneas has been using a stick to support his plant. It has helped his sunflower stay strong in the windy weather.
5. Freddie planted his seeds in pots and then moved them outside into the garden.
6. Eddy's plant is growing really well
7. Alice's sunflower grew really tall in its pot, before she planted it in the garden!
8. Lauren's sunflowers are nearly as tall as her!
9. George has grown lots of plants from his seeds. When the weather improves he is going to plant them into the flower beds.



ASPIRE | BELIEVE | SUCCEED

Nailsea School Mizzymead Road Nailsea BS48 2HN
01275 852251 | nailseaschool.com | info@nailseaschool.com



Creative Writing Piece

Here is an example of one of the excellent ghost stories we have received from our year 8 students this term. Alice H builds tension in her story as a ghostly figure interrupts the life of a young couple. Mrs Cooper was really impressed with this piece of creative writing by Alice H. The writing is really controlled and the structure of the story is really impressive. Well done Alice.

Ghost Story by Alice H

It was hard to find a perfect house. They had just put theirs on the market and were ready to start searching for a new one. Sarah and John could never find a house that felt like home. But it was their lucky day. Sarah got a phone call and walked over to John.

"We have a house." John's face lit up.

The next day, they went to look at the house they had been told about. After an hour, they decided that this was the one. A month went by and they were all settled in. But it wasn't as it seemed. They got ready for bed but Sarah suddenly felt something strange. The atmosphere had changed. It was cold and dark. The hairs on her arm rose as if they were being pulled.

She whispered to John, "do you feel that?"

John frowned and replied with a confused tone, "what are you talking about?"

Sarah felt shivers down her spine. She knew that something didn't feel right and she sensed that she could be in danger.

The next morning it was as if nothing had ever happened. It was a bright, sunny morning. Sarah had tried to forget about the whole thing but it never left her mind. She got up to look in the mirror and froze. Her reflection wasn't alone. She sharply turned around. Nothing was there.

"We can't stay here." Sarah said in a trembling voice.

She went into the bathroom and washed her face. There it was again. A face. Two eyes. But strangely, no mouth. She could feel her blood pressure rise as she stood as still as a statue. It was as if it was a dream. But it felt so real.

John got up to see if she was ok but something startled him. Something touched him.

"That's weird" he whispered. "Did you just tap me Sarah?" he said, in a frightened voice.

He turned around and no one was there. Suddenly John heard a blood curdling scream coming from the bathroom. He ran in to see what had happened and there she was. Sitting in the corner of the room, shaking like a leaf.

"Are you ok??" John said.

"I...s...s...s...saw it" Sarah said, trembling in fear. She pointed to the dirty mirror, swinging on the wall.

"You saw what??" John replied, staring at the mirror.

"It was horrible. It is watching our every move and I can't stay here any longer"

John helped her up and began packing their things. Just as they were about to open the door, they noticed something carved into the door. 'I hope you've learned your lesson'.

ASPIRE | BELIEVE | SUCCEED

Nailsea School Mizzymead Road Nailsea BS48 2HN



An Extract from a Story Written by a Y8 Duo

Here is an extract from an epic 11 page story co-written by Martha and Poppy in year 8. Mrs Cooper was hugely impressed with the story and has learnt a lot about horses from reading it! Well done Martha and Poppy; what a great way to develop your skills and create something positive from lockdown.

Horses

They nudged closer to the horses, both girls holding their breath as they did so. Once they were about a metre away, they started to talk slowly and quietly to the horses. The horses flinched at first, but the girls' calming voices made the horses calm down, and they then managed to each place a hand on the necks of the two horses. Spensa had chosen the knobstrupper to calm down, and Ashley quietly laid a hand onto the cob's back. Holding a small piece of carrot flat on her palm, Ashley made a slip knot with the rope and put her arm through the hole, and as the cob ate the carrot, she slipped it over its nose. The horse jumped a little bit but calmed down soon after. Spensa did the same, but the knobstrupper didn't flinch at the rope and stood quietly. Spensa and Ashley realised that the horses weren't wild and had come from somewhere else.

"Good boy, good boy easy now, everything will be alright. Ashley, where do you think they could have come from? They look like they have been mistreated," whispered Spensa.

"I don't know where they came from but they look beaten and unloved. Easy girl, it's alright. Oh! And I think she is blind!" said Ashley, with a tear in her eye.

"And this horse has got a bleeding hoof! Poor things..." said Spensa, who looked miserable as well.

Suddenly, Spensa perked up.

"What if we can look after them? I mean, you have quite a big garden and you have a shed that could fit two horses inside. What do you think?"

"I don't know. As much as I would like to look after them at my house, I don't think mum would be very pleased when she finds out that two horses are in her garden. Is there any other place we could keep them? Like we could build a shelter in the woods for them and make a fence. We have bamboo..."

As the girls were talking quietly, the horses became more and more restless, so Ashley and Spensa decided that they had to leave them in the garden for the night in the shed. Then, they would get up early the next day and move the horses from the garden. But instead of going back to bed, they decided to camp out in the garden. That way, they could keep an eye on the horses. After using the spare key in the safe outside, they bundled all of their stuff together including a set of fresh clothes for the next day and their phones to set an alarm for 4:00 am. This would give them enough time to take the horses somewhere else.

Nailsea Music Composition Winners

KS3

- | | |
|---------------------------|------------------|
| 1st Place Lilly W Phoenix | 100 House points |
| 2nd Place Rujula S Dragon | 50 House points |
| 3rd Place Jacob C Griffin | 20 House points |

KS4

- | | |
|--|------------------------|
| Joint 1st place Sophie C Griffin & Jemma S Griffin | 100 House points each. |
| Joint 2nd place Amelia F Unicorn & Elena H Griffin | 50 House points each |
| 3rd place Hannah L-J Dragon | 20 House points |

KS5

- | |
|---|
| Joint 1st place Katherine D & Charlie C |
| 2nd place Anna - May P |

Congratulations to
everyone that took part
and especially the
winners, great work!

Nailsea School
MUSIC

ASPIRE | BELIEVE | SUCCEED

Nailsea School Mizzymeard Road Nailsea BS48 2HN

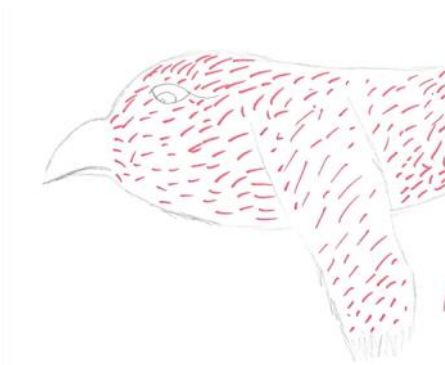
01275 852251 | nailseaschool.com | info@nailseaschool.com



Harrison P



Alba C



Charlie H



Yasmin H



April K



Zac G



Lily M



Sam Br



Zach W



Daisy B

Stravinsky's 'Firebird'.

Mrs Perkin's Year 7 Music students were asked to draw pictures inspired by Stravinsky's 'Firebird' the piece of music was performed in 1910, the ballet tells the story of a magical firebird, enchanted princesses, prince and a magician.

A range of entries were submitted, in different types of media, including drawings, paintings and computer generated designs.



Freya M



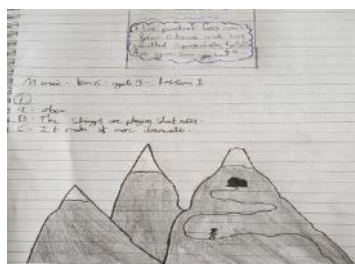
Darci B

ASPIRE | BELIEVE | SUCCEED

Nailsea School Mizzymeard Road Nailsea BS48 2HN
01275 852251 | nailseaschool.com | info@nailseaschool.com



Charles C



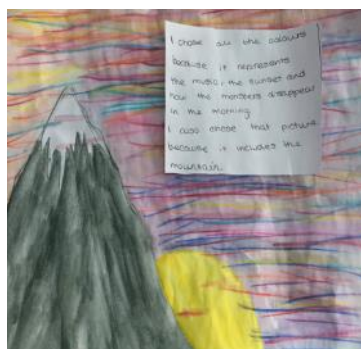
Joe B



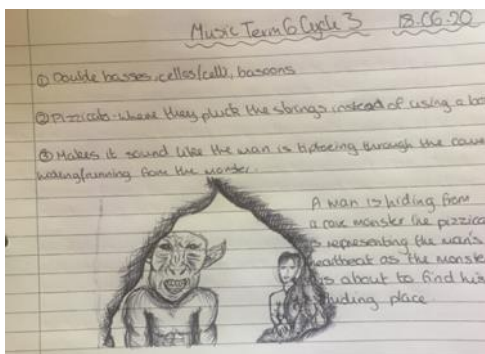
Rhian J



Jude W



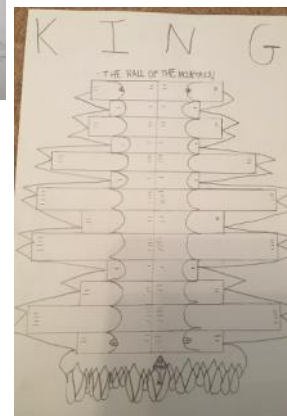
Emmeline C



Anaska L



Joshua G



Jacob C



Sophie T-K



Sam G



Faith R



Isabelle B-S



Erica H

Year 8 Hall of the Mountain King

Mrs Perkin's Year 8 Music students were asked for a creative response to the piece of Music 'The Hall of The Mountain King' By Grieg. Well done year 8s!

ASPIRE | BELIEVE | SUCCEED

Nailsea School Mizzymead Road Nailsea BS48 2HN
01275 852251 | nailseaschool.com | info@nailseaschool.com



Geography News

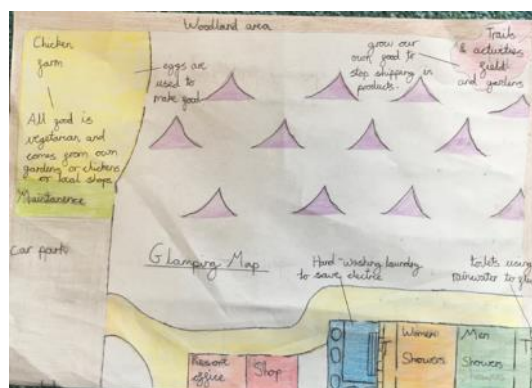
The Geography department has been massively impressed with the fantastic work which has been received and are really pleased with the independent skills that students have shown.

Year 7s have now finished their topic on Africa and specifically Kenya and produced some amazing ecotourism resorts. Their new topic is on settlement and place and already some really good extended writing has been submitted.

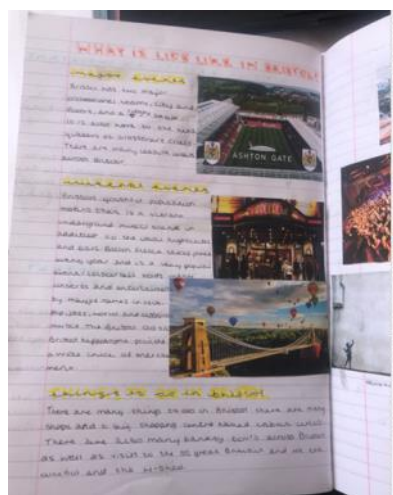
Year 8s have now moved onto looking at deserts. It was great to see so many involved in Mr Bunce's lesson, and again some lovely work has been submitted showing excellent knowledge and understanding of this biome.

Year 9s have been starting a GCSE topic on polar environments, and we enjoyed reading about their polar expeditions to either the Arctic or Antarctica. They have also produced some fantastic work on human impacts in these environments and how these areas can be managed.

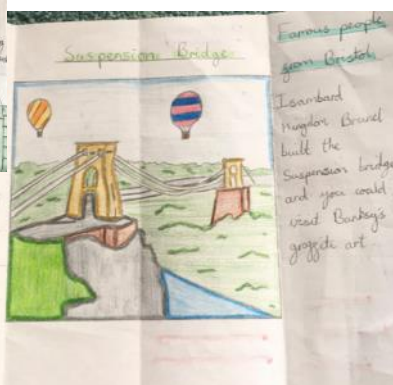
Well done to year 10s who have now completed a whole topic at home on Urban futures. They have completed two in depth case studies on Mumbai and Bristol with some fantastic summary mind maps being submitted. They have now started dynamic development and we are looking forward to seeing some of them in school next week.



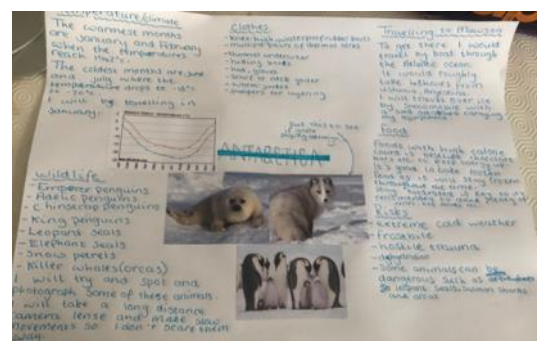
Eloise B



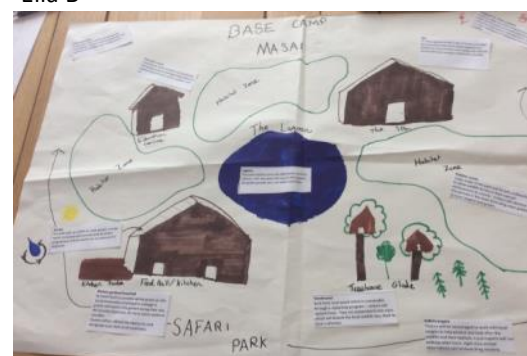
Abi R



Hannah L



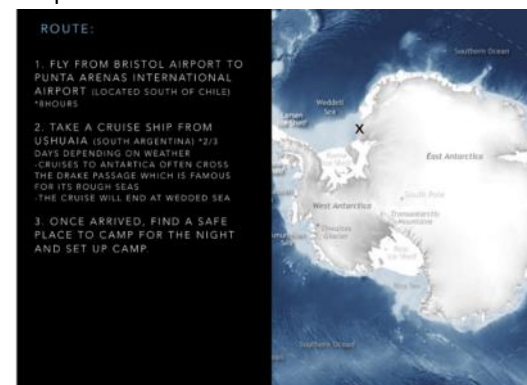
Ella B



Evie H

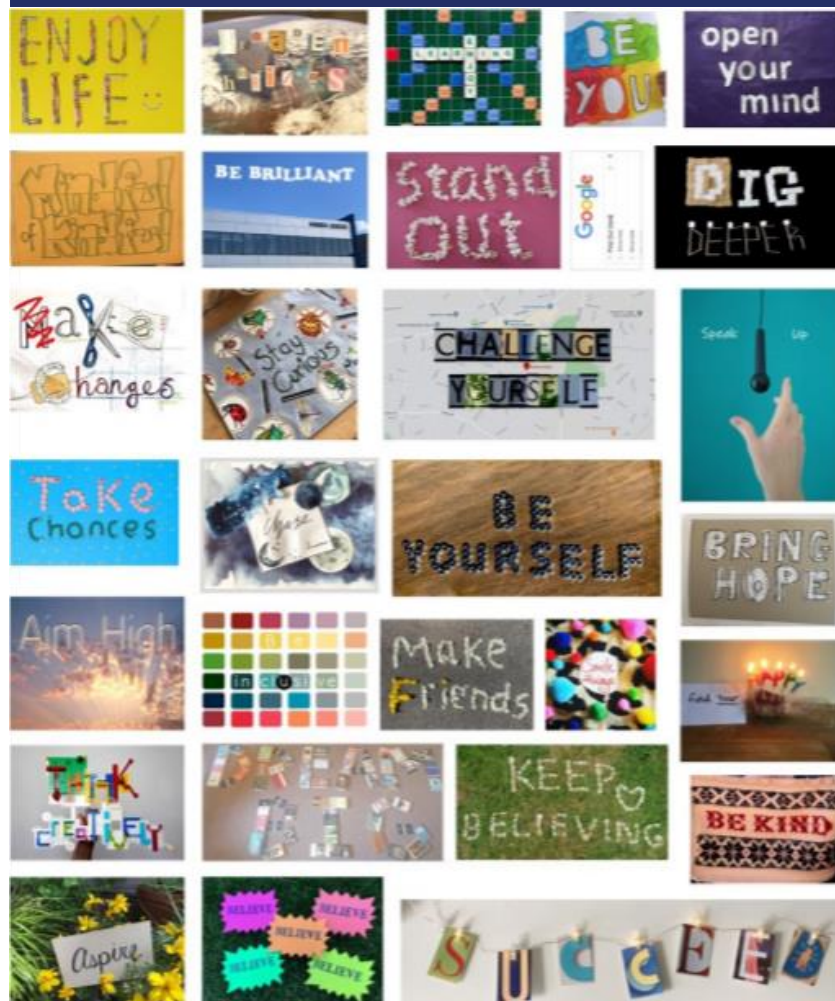


Hope E



ASPIRE | BELIEVE | SUCCEED

Nailsea School Mizzymeade Road Nailsea BS48 2HN
01275 852251 | nailseaschool.com | info@nailseaschool.com



The Lockdown Lowdown

These past few terms have shown us what it is to be part of our school community, and what a real and very special community looks like when it pulls together. Together we have achieved great things.

We are so impressed by the independent and flexible approach you have taken to your own learning, we know it hasn't been easy and you and your families should be proud of the achievements that you have made.

Hopefully you have found time to learn something about yourselves as well as taken this opportunity to develop your own learning patterns.

All of our staff, Governors and PTA colleagues have learned new skills and ways of working as we have navigated lockdown. We are grateful to them too.

September will be a whole new journey and as this time has proved, although we may face new challenges—working together we can face them as a team.

Have a happy break, be kind and keep safe.

WE ARE #TEAMNAILSEA

In Numbers....

In addition to setting, assessing and providing feedback on home learning, running Wellbeing sessions, providing careers advice, making phone calls home and meeting one to one with students this was all achieved:

- ★ Nailsea School ended up producing in the region of 300 face shields which went to a range of front-line workers, care homes, and local primary schools.
- ★ Nailsea School made protection screens for the 4 surgeries which make up Tyntesfield Medical Group.
- ★ 459 places taken up in Nailsea School by keyworker/vulnerable students during closure.
- ★ Over 2,000 Shout-Outs made to #TeamNailsea for going above and beyond.
- ★ Nearly 60 Three@3 videos made by senior staff members for your daily updates.
- ★ Ten Virtual House Challenges, set, judged, and awarded
- ★ Over 40 letters to families with updates on how schools are affected by Covid-19.

ASPIRE | BELIEVE | SUCCEED

Nailsea School Mizzymeard Road Nailsea BS48 2HN

01275 852251 | nailseaschool.com | info@nailseaschool.com